

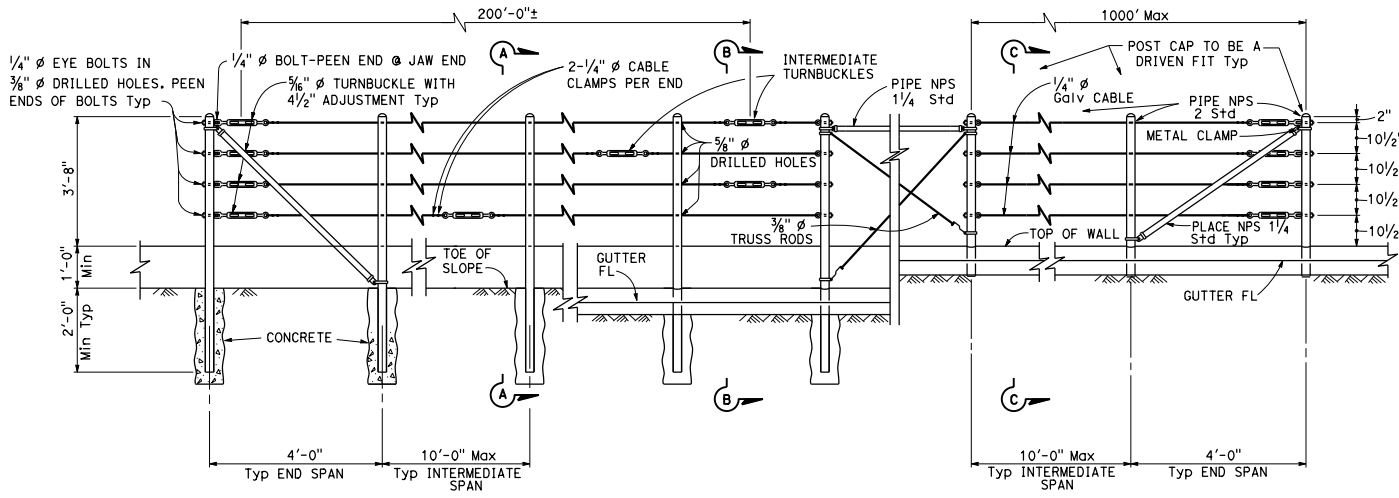
| Dist | COUNTY | ROUTE | POST MILES TOTAL PROJECT | SHEET TOTAL SHEETS |
|------|--------|-------|--------------------------|--------------------|
| | | | | |

REGISTERED CIVIL ENGINEER

May 20, 2011
PLANS APPROVAL DATE

THE STATE OF CALIFORNIA OR ITS OFFICERS OR AGENTS SHALL NOT BE RESPONSIBLE FOR THE ACCURACY OR COMPLETENESS OF SCANNED COPIES OF THIS PLAN SHEET.

REGISTERED PROFESSIONAL ENGINEER
Tillot Satter
No. C42892
Exp. 3-31-12
CIVIL
STATE OF CALIFORNIA



EXISTING WALL (WITHOUT GUTTER)
Existing

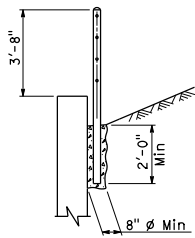
RETAINING WALL (WITH GUTTER)
Existing

RETAINING WALL (WITH GUTTER)
New construction

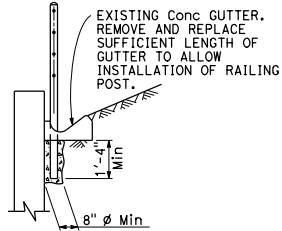
ELEVATION

NOTES:

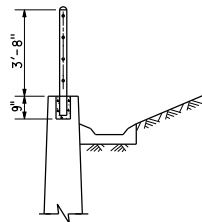
- Maximum distance between turnbuckles shall be 200'-0"±.
- Intermediate turnbuckles to be placed in adjacent spans.
- Cable shall not be spliced between intermediate turnbuckles and end posts.
- Posts to be vertical.
- Alignment of holes in posts may vary to conform to slope of top of retaining wall.
- The Contractor shall verify all dependent dimensions in the field before ordering or fabricating any material.
- Line posts shall be braced horizontally and trussed diagonally in both directions at intervals not to exceed 1000'.
- Post pockets to be centered in top of wall.
- Typical end spans, braced in both directions, shall be constructed at changes in line where the angle of deflection is 15° or more.
- Provide thimbles at all cable loops.



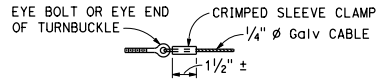
SECTION A-A
Existing



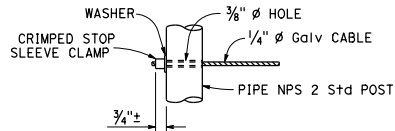
SECTION B-B
Existing



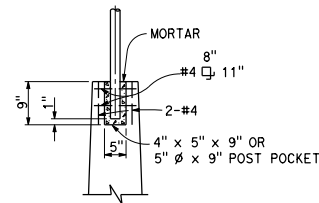
SECTION C-C
New construction



ALTERNATIVE CABLE CONNECTION



ALTERNATIVE DEAD END ANCHORAGE



POST POCKET

STATE OF CALIFORNIA
DEPARTMENT OF TRANSPORTATION
CABLE RAILING

NO SCALE

RSP B11-47 DATED OCTOBER 21, 2011 SUPERSEDES STANDARD PLAN B11-47
DATED MAY 20, 2011 - PAGE 293 OF THE STANDARD PLANS BOOK DATED 2010.

REVISED STANDARD PLAN RSP B11-47

2010 REVISED STANDARD PLAN RSP B11-47