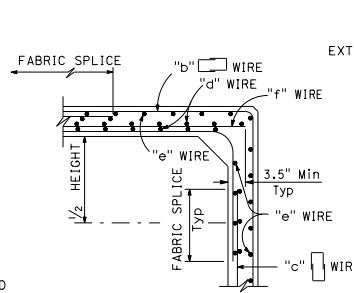
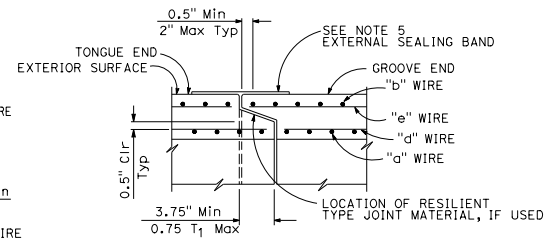


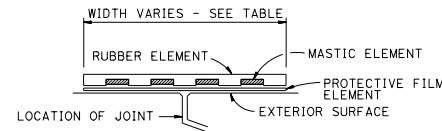
TYPICAL SECTION - SPANS 4'-0" THRU 12'-0"



ALTERNATIVE DETAILING OPTION



END JOINT DETAIL

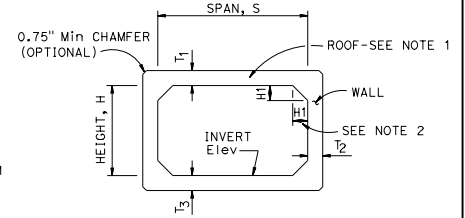


EXTERNAL SEALING BAND SCHEMATIC

Dist	COUNTY	ROUTE	POST MILES TOTAL PROJECT	SHEET No.	TOTAL SHEETS

REGISTERED CIVIL ENGINEER
 July 18, 2014
 PLANS APPROVAL DATE
 THE STATE OF CALIFORNIA OR ITS OFFICERS OR AGENTS SHALL NOT BE RESPONSIBLE FOR THE ACCURACY OR COMPLETENESS OF SCANNED COPIES OF THIS PLAN SHEET.

TO ACCOMPANY PLANS DATED _____



SCHEMATIC

TABLE	
SPAN	EXTERNAL SEALING BAND WIDTH
4'-6'	9"
7'-8'	11"
10'-12'	13"

SPAN, S	2'				3'				4'				5'				6'				7'				
	10'	20'	10'	20'	10'	20'	10'	20'	10'	20'	10'	20'	10'	20'	10'	20'	10'	20'	10'	20'	10'	20'	10'	20'	
MAXIMUM EARTH COVER	[Values for earth cover]																								
CONCRETE (INCH)	ROOF	[Values for roof]																							
	SIDE WALL	[Values for side wall]																							
	INVERT	[Values for invert]																							
MINIMUM WELDED WIRE FABRIC (Inch ² /ft)	"a"	[Values for 'a' wire]																							
	"b"	[Values for 'b' wire]																							
	"c"	[Values for 'c' wire]																							
	"d"	[Values for 'd' wire]																							
	"e"	[Values for 'e' wire]																							
* QUANTITY	Conc	[Values for concrete]																							
	Reinf	[Values for reinforcement]																							
** SOIL PRESSURE (ksf)	[Values for soil pressure]																								

SPAN, S	4'				5'				6'				7'				8'				9'				10'				11'				12'			
	10'	20'	10'	20'	10'	20'	10'	20'	10'	20'	10'	20'	10'	20'	10'	20'	10'	20'	10'	20'	10'	20'	10'	20'	10'	20'	10'	20'	10'	20'	10'	20'				
MAXIMUM EARTH COVER	[Values for earth cover]																																			
CONCRETE (INCH)	ROOF	[Values for roof]																																		
	SIDE WALL	[Values for side wall]																																		
	INVERT	[Values for invert]																																		
MINIMUM WELDED WIRE FABRIC (Inch ² /ft)	"a"	[Values for 'a' wire]																																		
	"b"	[Values for 'b' wire]																																		
	"c"	[Values for 'c' wire]																																		
	"d"	[Values for 'd' wire]																																		
	"e"	[Values for 'e' wire]																																		
* QUANTITY	Conc	[Values for concrete]																																		
	Reinf	[Values for reinforcement]																																		
** SOIL PRESSURE (ksf)	[Values for soil pressure]																																			

* See Note 3 ** See Note 6

- NOTES:**
- The inside and outside surfaces of the RCB roof shall be marked "TOP".
 - H1 minimum shall equal the wall thickness. H1 maximum shall be 8' for spans through 8' and 14' for spans over 8'.
 - Quantities are approximate and for design purposes only.
 - For design and details not shown see Revised Standard Plan RSP D83B.
 - For external sealing band applications see Standard Plan A626.
 - Soil pressures shown are factored per AASHTO LRFD and include soil weight of fill over box, self weight of box and live load where applicable.

STATE OF CALIFORNIA
DEPARTMENT OF TRANSPORTATION

PRECAST REINFORCED CONCRETE BOX CULVERT
NO SCALE

RSP D83A DATED JULY 18, 2014 SUPERSEDES STANDARD PLAN D83A
DATED MAY 20, 2011 - PAGE 175 OF THE STANDARD PLANS BOOK DATED 2010.

REVISED STANDARD PLAN RSP D83A

2010 REVISED STANDARD PLAN RSP D83A