

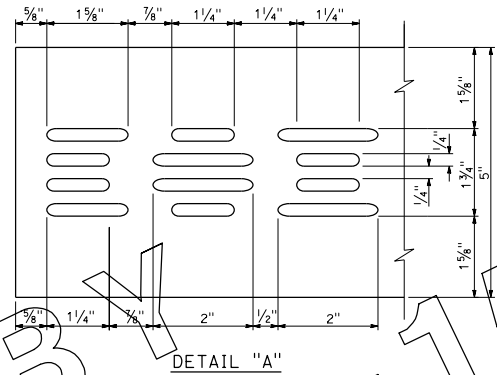
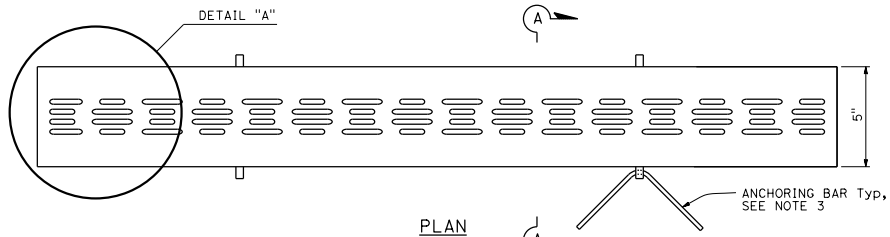
DIST	COUNTY	ROUTE	POST MILES TOTAL PROJECT	SHEET NO.	TOTAL SHEETS

Raymond C. Jester
REGISTERED CIVIL ENGINEER

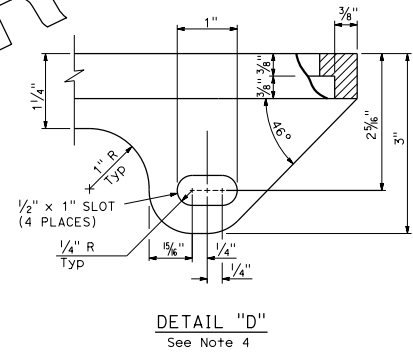
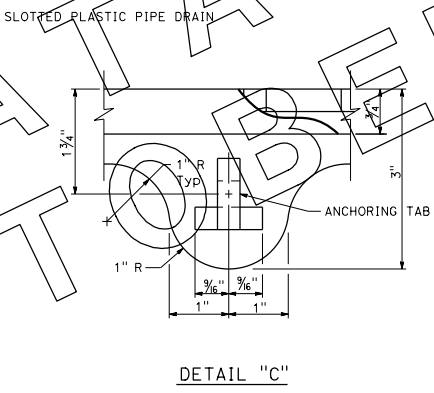
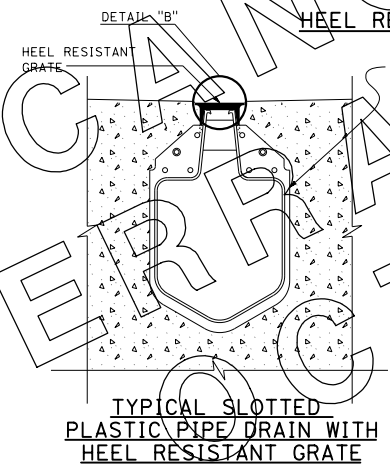
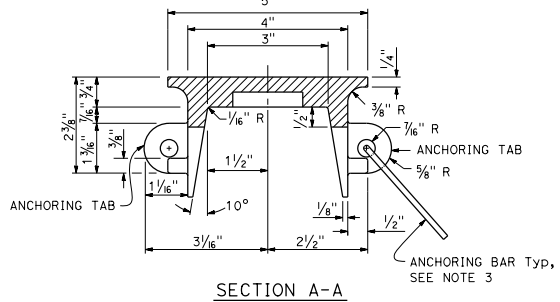
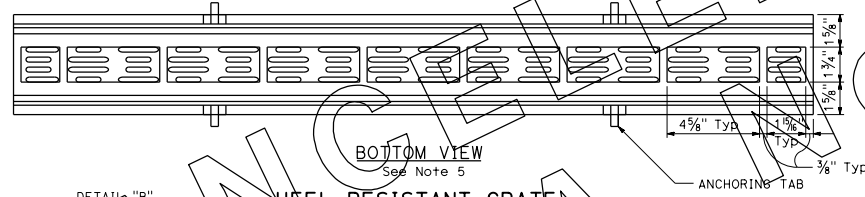
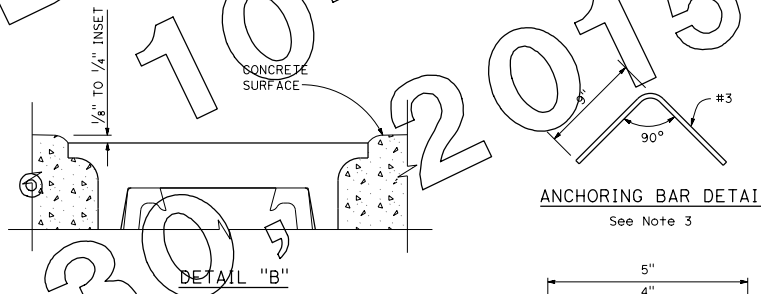
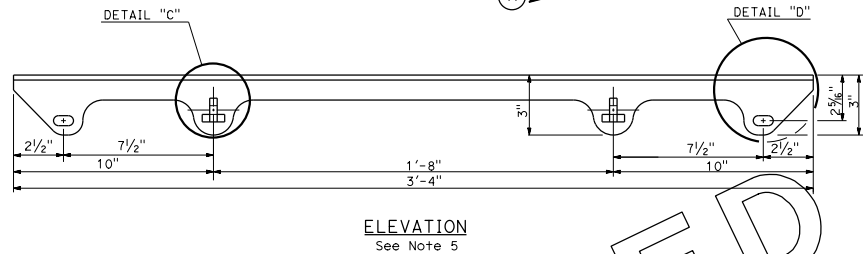
May 20, 2011
PLANS APPROVAL DATE

Raymond C. Jester
REGISTERED PROFESSIONAL ENGINEER
EX. 6-30-12
CIVIL
STATE OF CALIFORNIA

THE STATE OF CALIFORNIA OR ITS OFFICERS OR AGENTS SHALL NOT BE RESPONSIBLE FOR THE ACCURACY OR COMPLETENESS OF SCANNED COPIES OF THIS PLAN SHEET.



- NOTES:**
1. Grate patterns may vary from detail shown.
 2. $\frac{3}{16}$ " maximum gap between adjacent gratings.
 3. Use anchoring bar through each anchoring tab to anchor heel resistant grate to concrete backfill. 4 locations for each grate section.
 4. Use $\frac{3}{8}$ " diameter bolt, nut, and washer to hold grate to slotted drain, prior to backfilling with concrete. 4 locations.
 5. Anchoring bars are not shown.



STATE OF CALIFORNIA
DEPARTMENT OF TRANSPORTATION

**HEEL RESISTANT GRATE
FOR SLOTTED PLASTIC PIPE DRAIN**

NO SCALE

D98E

2010 STANDARD PLAN D98E

210