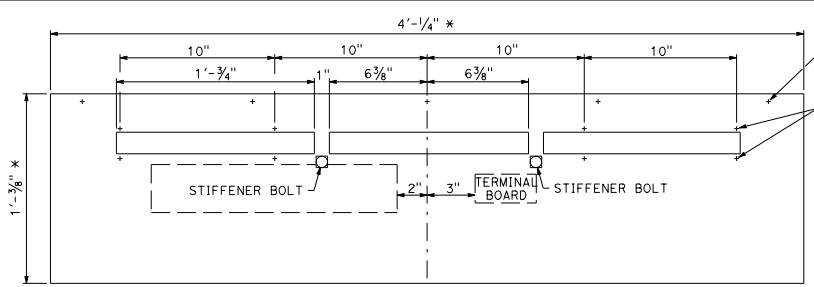


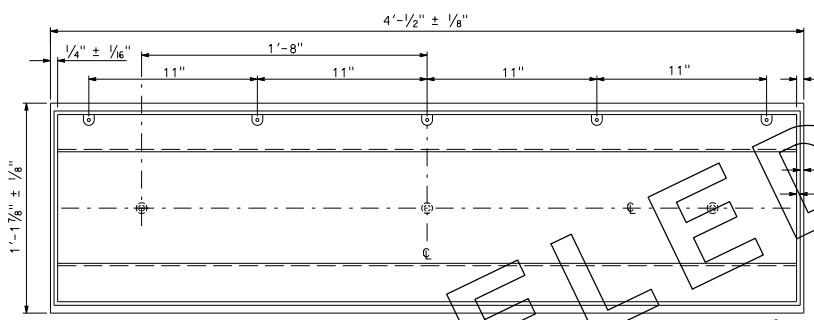
DIST	COUNTY	ROUTE	POST MILES TOTAL PROJECT	SHEET NO.	TOTAL SHEETS

Jeffrey G. McFar
 REGISTERED ELECTRICAL ENGINEER
 May 20, 2011
 PLANS APPROVAL DATE
 THE STATE OF CALIFORNIA OR ITS OFFICERS OR AGENTS SHALL NOT BE RESPONSIBLE FOR THE ACCURACY OR COMPLETENESS OF SCANNED COPIES OF THIS PLAN SHEET.

REGISTERED PROFESSIONAL ENGINEER
 Jeffrey G. McFar
 No. 14512
 Exp. 6-30-12
 ELECTRICAL
 STATE OF CALIFORNIA

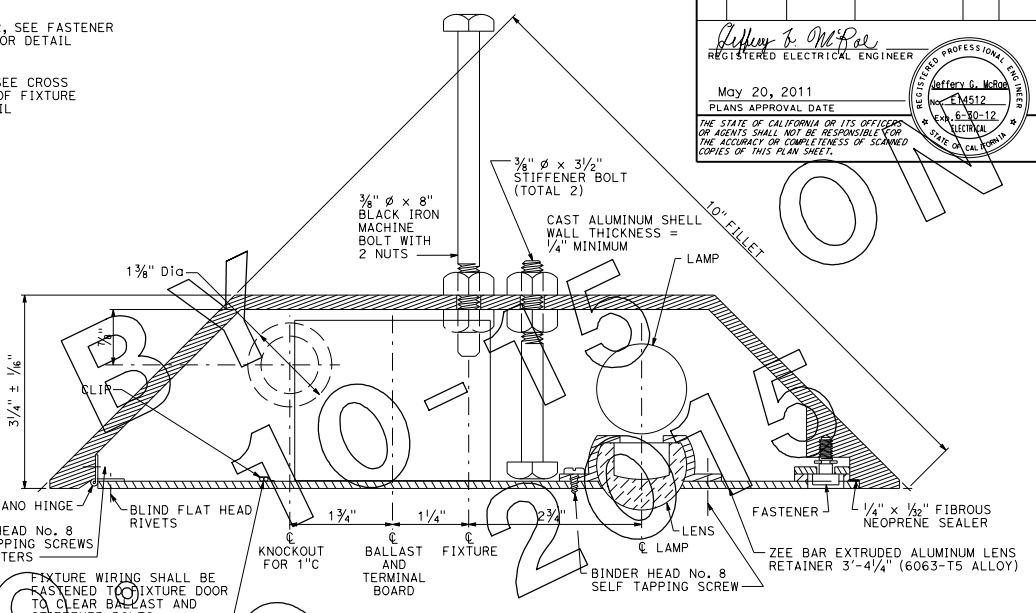


DOOR OF FIXTURE

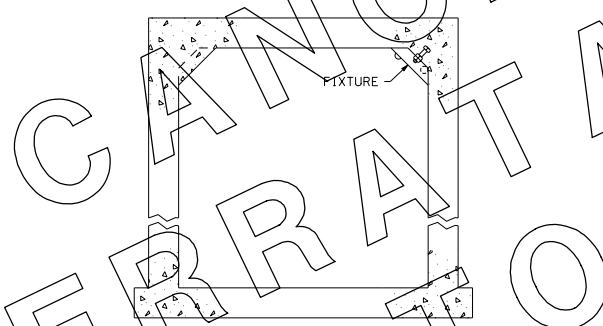


SHELL OF FIXTURE

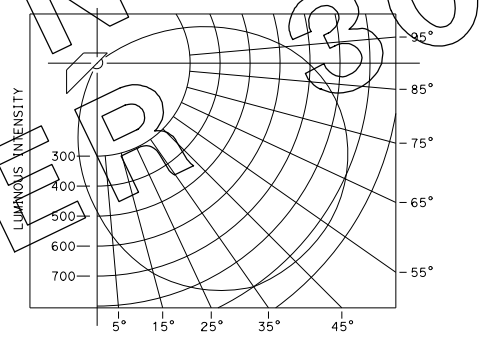
* DIMENSIONS OF DOOR SHALL VARY TO FIT FIXTURE SHELL WITHIN 1/16" OF ACTUAL DOOR RECESS DIMENSIONS.
See Notes 3 and 4



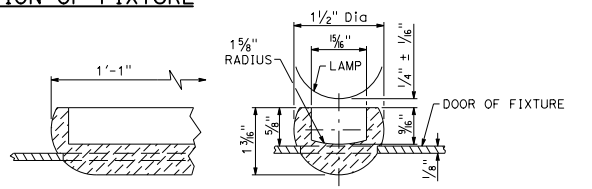
CROSS SECTION OF FIXTURE



TYPICAL CROSS SECTION OF PEDESTRIAN UC



TYPICAL LUMINOUS INTENSITY DISTRIBUTION



FIXTURE LENS

NOTES:

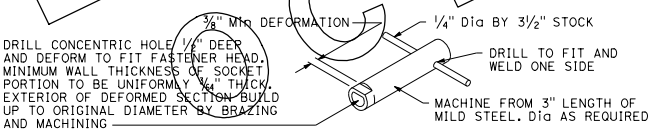
- When fixture shell is installed, stiffener bolts shall be set with about 1/8" clearance between bolt head and door before placing concrete.
- When fixture door is mounted, stiffener bolts shall be reset to barely clear inside of fixture door and inside nut shall be tightened.
- The maximum tolerance between door and lens shall be 1/64". Casting dimensions of shell are nominal and are subject to such tolerances as are consistent with sound foundry practice.
- Continuous grounding between fixtures and from fixture to grounding electrode.

STATE OF CALIFORNIA
DEPARTMENT OF TRANSPORTATION

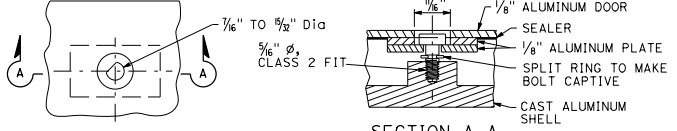
**ELECTRICAL SYSTEMS
(PEDESTRIAN UNDERCROSSING
FLUORESCENT LIGHTING FIXTURE)**

NO SCALE

ES-12B



SPECIAL SOCKET WRENCH



FASTENER DETAIL