

DIST	COUNTY	ROUTE	POST MILES TOTAL PROJECT	SHEET NO.	TOTAL SHEETS

Raymond Don Isztou
 REGISTERED CIVIL ENGINEER
 No. C37332
 Exp. 6-30-16
 CIVIL
 STATE OF CALIFORNIA

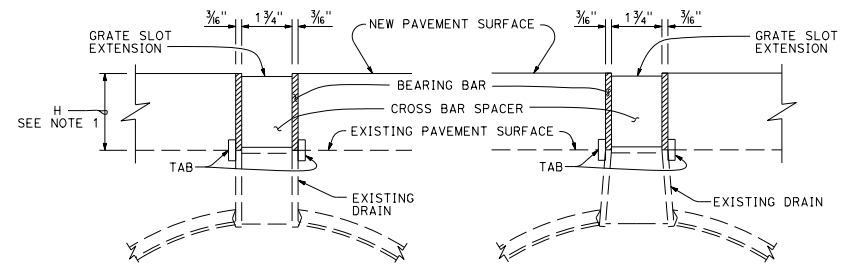
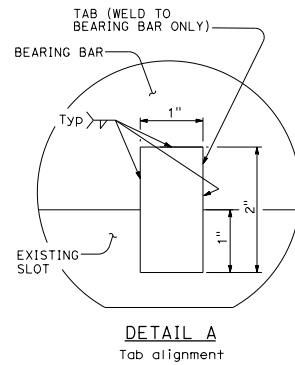
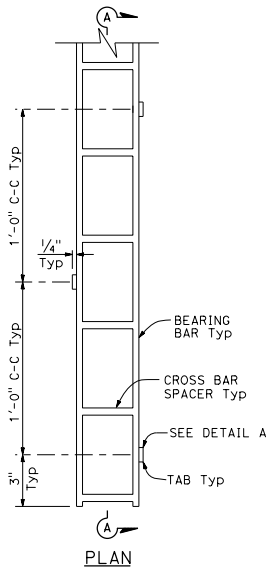
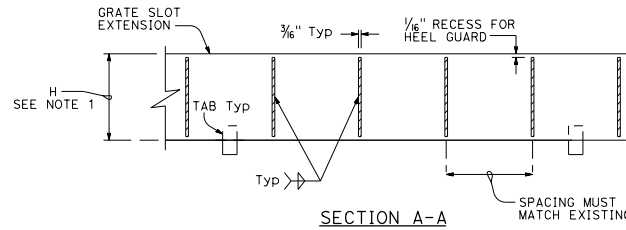
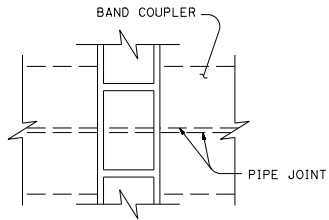
THE STATE OF CALIFORNIA OR ITS OFFICERS OR AGENTS SHALL NOT BE RESPONSIBLE FOR THE ACCURACY OR COMPLETENESS OF SCANNED COPIES OF THIS PLAN SHEET.

TO ACCOMPANY PLANS DATED _____

NOTES:

- H must be a minimum of 2 1/2", or otherwise shown on the plans.
- For Slotted Corrugated Steel Pipe Drain Details, see Standard Plans D98A and D98B.
- Use heel guard when shown. See Standard Plan D98B for heel guard details.
- Minimum grate slot extension length is 80".
- The top corners of the grate slot extension's bearing bars must not vary from a straight line more than 1/2" in 20'-0".
- Cross bar spacers must be welded to the grate slot extension's bearing bars to achieve a minimum tensile strength of 12,000 LB normal to the longitudinal axis of the bearing bars.

2010 REVISED STANDARD PLAN RSP D98F



RECTANGULAR SPACER SECTION TAPERED SPACER

SLOTTED CORRUGATED STEEL PIPE
Grate slot extension

SLOTTED CORRUGATED STEEL PIPE
Grate slot extension

STATE OF CALIFORNIA
DEPARTMENT OF TRANSPORTATION
**SLOTTED STEEL PIPE GRATE
EXTENSION DETAILS**

NO SCALE

RSP D98F DATED OCTOBER 30, 2015 SUPERSEDES RSP D98F DATED JULY 19, 2013 THAT SUPPLEMENTS THE STANDARD PLANS BOOK DATED 2010.

REVISED STANDARD PLAN RSP D98F