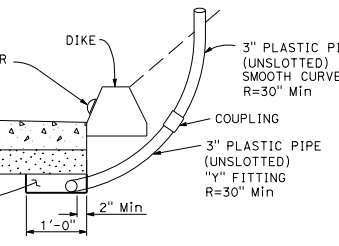
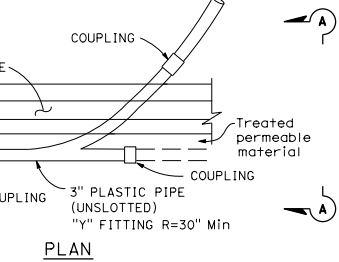


DIST	COUNTY	ROUTE	POST MILES TOTAL PROJECT	SHEET No.	TOTAL SHEETS

William K. Farbach
 REGISTERED CIVIL ENGINEER
 No. C49042
 Exp. 9-30-16
 CIVIL
 STATE OF CALIFORNIA

October 30, 2015
 PLANS APPROVAL DATE
 THE STATE OF CALIFORNIA OR ITS OFFICERS
 OR AGENTS SHALL NOT BE RESPONSIBLE FOR
 THE ACCURACY OR COMPLETENESS OF SCANNED
 COPIES OF THIS PLAN SHEET.

TO ACCOMPANY PLANS DATED _____
 PIPE PLUG OR VENT COVER
 SEE NOTE 4



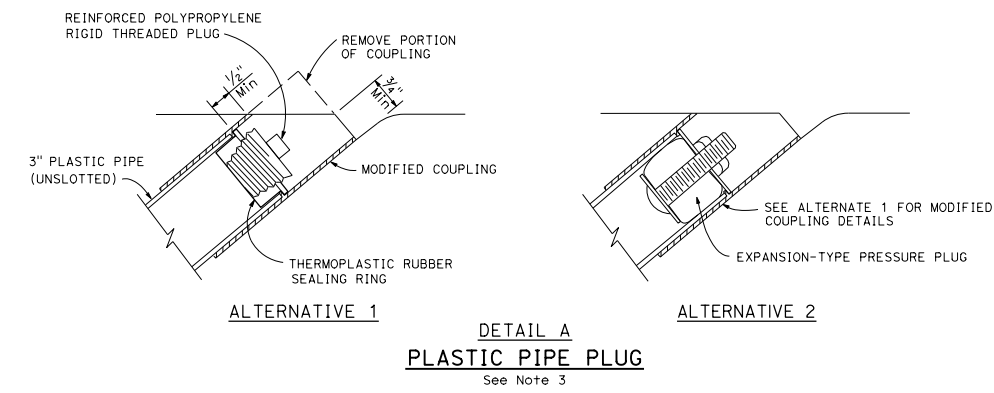
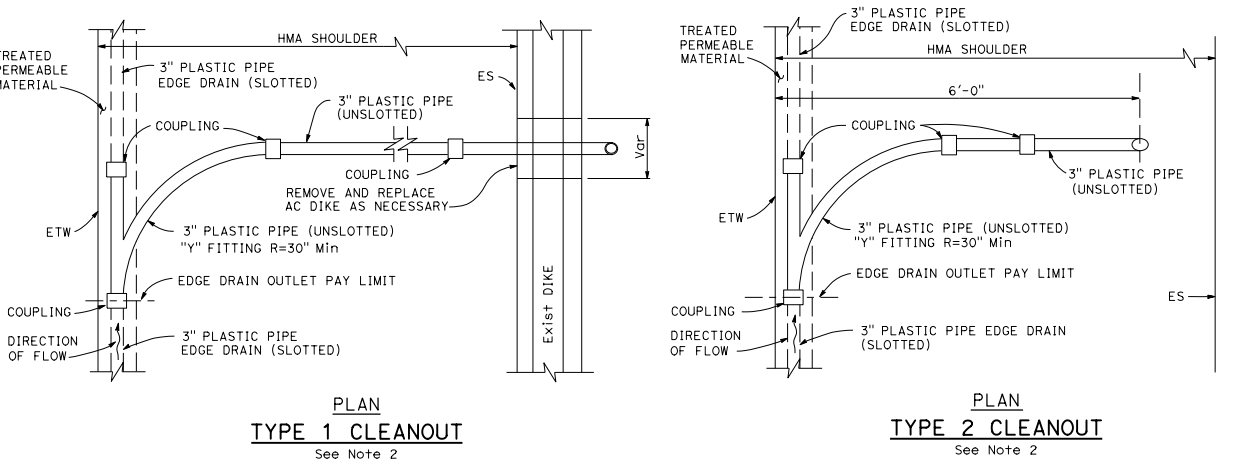
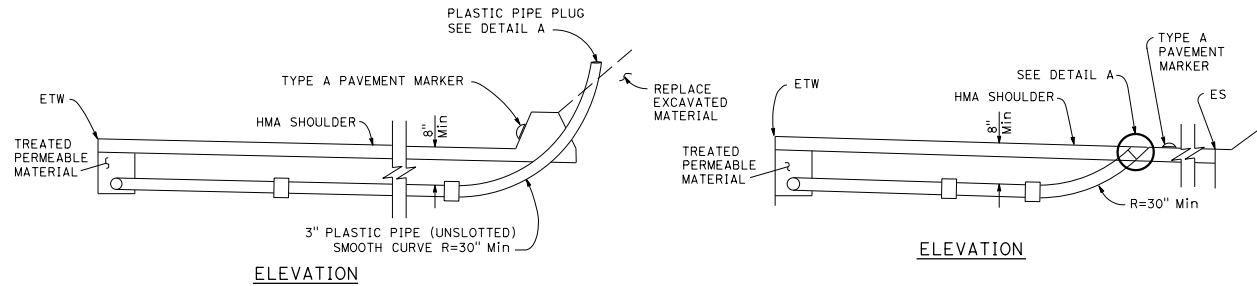
TYPE 3 CLEANOUT/TYPE G VENT
 See Note 4

- NOTES:**
- See project plans for location and type of cleanout or vent installations.
 - The position of slotted plastic pipe and limits of treated permeable material shown are for the Type 1 structural section drainage system shown on Revised Standard Plan RSP D99A.
 - Other types of plugs may be substituted with the Engineer's approval.
 - The Type 3 cleanout and Type G vent is for use with concrete shoulders. The Type 6 structural section drainage system from Revised Standard Plan RSP D99A is shown. Use plastic pipe plug shown in Detail A with Type 3 cleanouts. Use vent cover shown on Revised Standard Plan RSP D99B with Type G vents.

STATE OF CALIFORNIA
 DEPARTMENT OF TRANSPORTATION
**EDGE DRAIN CLEANOUT
 AND VENT DETAILS**
 NO SCALE

RSP D99C DATED OCTOBER 30, 2015 SUPERSEDES STANDARD PLAN D99C
 DATED MAY 20, 2011 - PAGE 213 OF THE STANDARD PLANS BOOK DATED 2010.

REVISED STANDARD PLAN RSP D99C



2010 REVISED STANDARD PLAN RSP D99C