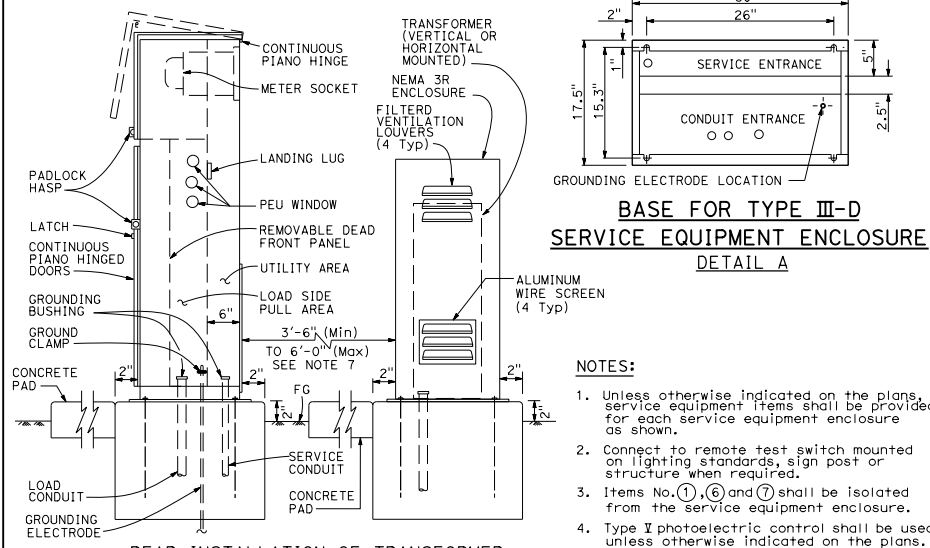
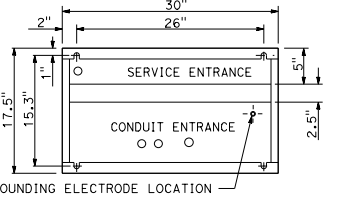


SIDE INSTALLATION OF TRANSFORMER

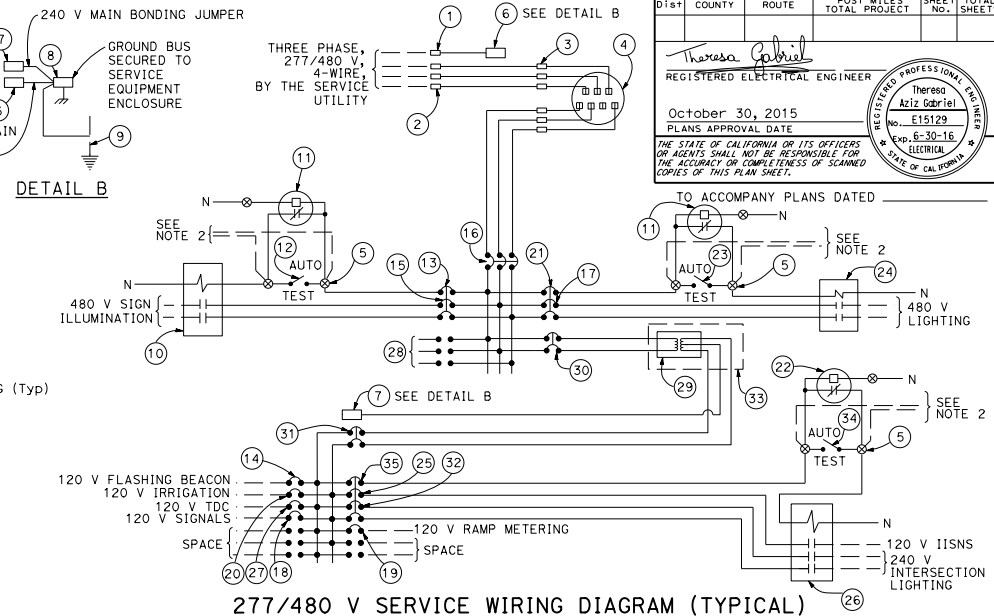


**REAR INSTALLATION OF TRANSFORMER
TYPE III-DF SERVICE EQUIPMENT ENCLOSURE
TYPICAL**



**BASE FOR TYPE III-D
SERVICE EQUIPMENT ENCLOSURE
DETAIL A**

- NOTES:**
1. Unless otherwise indicated on the plans, service equipment items shall be provided for each service equipment enclosure as shown.
 2. Connect to remote test switch mounted on lighting standards, sign post or structure when required.
 3. Items No. ①, ⑥ and ⑦ shall be isolated from the service equipment enclosure.
 4. Type I photoelectric control shall be used unless otherwise indicated on the plans.
 5. Color of insulation of the neutral shall be gray for the 277/480 V system and shall be white for the 120/240 V system.
 6. Items ⑬, ⑰ and ⑳ shall be ganged operated CB.



**277/480 V SERVICE WIRING DIAGRAM (TYPICAL)
DETAIL C**

TYPE III-D SERVICE (277/480 V) EQUIPMENT LEGEND					
ITEM No.	COMPONENT	NAMEPLATE DESCRIPTION	ITEM No.	COMPONENT	NAMEPLATE DESCRIPTION
①	NEUTRAL LUG		⑲	30 A, 120 V, 1P, CB	RAMP METERING (120 V)
②	LANDING LUG		⑳	20 A, 120 V, 1P, CB	IRRIGATION (120 V)
③	TEST BYPASS FACILITY		㉑	10 A, 277 V, 1P, CB	LIGHTING CONTROL (277 V)
④	METER SOCKET AND SUPPORT		㉒	PHOTOELECTRIC UNIT (NOTE 4)	PEU (120/240 V)
⑤	TERMINAL BLOCKS		㉓	15 A, 1P, TEST SWITCH	LIGHTING TEST SWITCH (277 V)
⑥	NEUTRAL BUS	NEUTRAL BUS (480 V)	㉔	30 A, 2P, NO CONTACTOR	LIGHTING (480 V)
⑦	NEUTRAL BUS	NEUTRAL BUS (240 V)	㉕	15 A, 120 V, 1P, CB	IISNS (120 V)
⑧	GROUND BUS		㉖	30 A, 3P, NO CONTACTOR	INTERSECTION LIGHTING (120 V)
⑨	GROUNDING ELECTRODE		㉗	20 A, 120 V, 1P, CB	TELEPHONE DEMARCATION CABINET (120 V)
⑩	30 A, 2P, NO CONTACTOR	SIGN ILLUMINATION (480 V)	㉘	20 A, 480 V, 3P, CB	SPACE
⑪	PHOTOELECTRIC UNIT (NOTE 4)	PEU (277/480 V PEU)	㉙	15 KVA, 480-120/240 V TRANSFORMER	TRANSFORMER, 15 KVA, 480-240 V
⑫	15 A, 1P, TEST SWITCH	SIGN ILLUMINATION TEST SWITCH (277 V)	㉚	40 A, 480 V, 2P, CB	TRANSFORMER PRIMARY (480 V)
⑬	10 A, 277 V, 1P, CB	SIGN ILLUMINATION CONTROL (277 V)	㉛	80 A, 240 V, 2P, CB	TRANSFORMER SECONDARY (240 V)
⑭	15 A, 120 V, 1P, CB	FLASHING BEACON (120 V)	㉜	30 A, 240 V, 2P, CB	INTERSECTION LIGHTING (240 V)
⑮	15 A, 480 V, 2P, CB	SIGN ILLUMINATION (480 V)	㉝	NEMA 3R ENCLOSURE WITH LOUVERS	TRANSFORMER, 15 KVA, 480-240 V
⑯	100 A, 480 V, 3P, CB	MAIN BREAKER (480 V)	㉞	15 A, 1P, TEST SWITCH	IISNS AND INTERSECTION LIGHTING TEST SWITCH (120 V)
⑰	15 A, 480 V, 2P, CB	LIGHTING (480 V)	㉟	10 A, 120 V, 1P, CB	IISNS AND INTERSECTION LIGHTING CONTROL (120 V)
⑱	50 A, 120 V, 1P, CB	SIGNAL (120 V)			

7. The NEMA 3R enclosure shall be located to the side of the service equipment enclosure unless otherwise indicated on the plans.
8. The base dimension for the NEMA 3R enclosure for the transformer shall be as per manufacturer's design.

NO SCALE

REVISED STANDARD PLAN RSP ES-2G

DIST	COUNTY	ROUTE	POST MILES TOTAL PROJECT	SHEET NO.	TOTAL SHEETS

Theresa Gabriel
REGISTERED ELECTRICAL ENGINEER
No. E15129
Exp. 6-30-16
ELECTRICAL
STATE OF CALIFORNIA

October 30, 2015
PLANS APPROVAL DATE

THE STATE OF CALIFORNIA OR ITS OFFICERS OR AGENTS SHALL NOT BE RESPONSIBLE FOR THE ACCURACY OR COMPLETENESS OF SCANNED COPIES OF THIS PLAN SHEET.

TO ACCOMPANY PLANS DATED _____
SEE NOTE 2

2010 REVISED STANDARD PLAN RSP ES-2G

RSP ES-2G DATED OCTOBER 30, 2015 SUPERSEDES STANDARD PLAN ES-2G DATED MAY 20, 2011 - PAGE 434 OF THE STANDARD PLANS BOOK DATED 2010.