
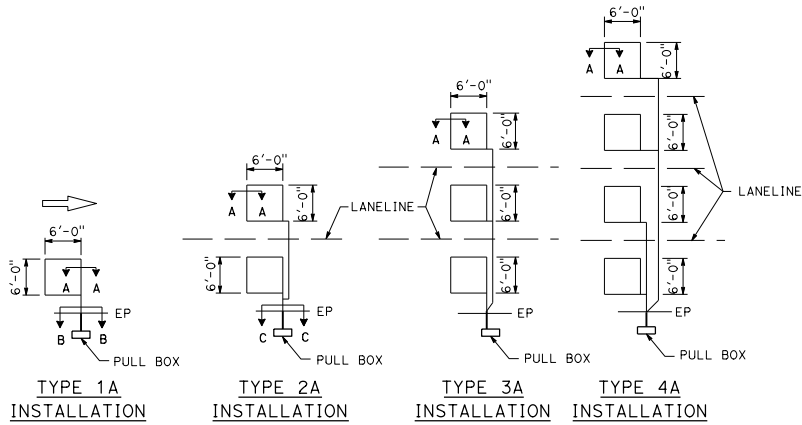


DIST	COUNTY	ROUTE	POST MILES TOTAL PROJECT	SHEET NO.	TOTAL SHEETS
					
Theresa Aziz Gabriel REGISTERED ELECTRICAL ENGINEER October 30, 2015 PLANS APPROVAL DATE THE STATE OF CALIFORNIA OR ITS OFFICERS OR AGENTS SHALL NOT BE RESPONSIBLE FOR THE ACCURACY OR COMPLETENESS OF SCANNED COPIES OF THIS PLAN SHEET.					

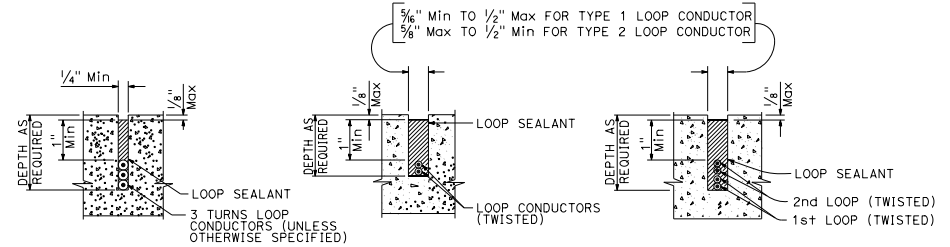
TO ACCOMPANY PLANS DATED _____



SAWCUT DETAILS

Type A loop detector configurations illustrated

1. 1A thru 4A = 1 Type A loop configuration in each lane.
 2. 1B thru 4B = 1 Type B loop configuration in each lane.
 3. 1C thru 4C = 1 Type C loop configuration entering lanes as required.
 4. 1D thru 4D = 1 Type D loop configuration in each lane.
 5. 1E thru 4E = 1 Type E loop configuration in each lane.
 6. 1Q thru 4Q = 1 Type Q loop configuration in each lane.
- Use Type A, B, C, D, E or Q loop detector configurations only when specified or shown on plans.

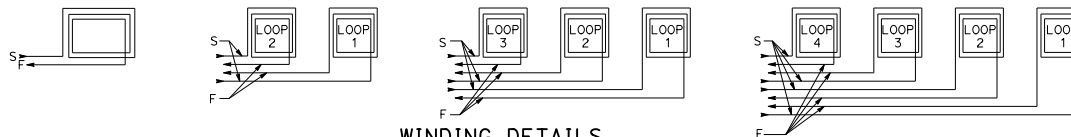


SECTION A-A

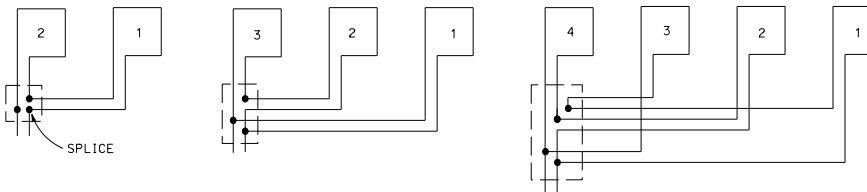
SECTION B-B

SECTION C-C

SLOT DETAILS - TYPE 1 AND TYPE 2 LOOP CONDUCTOR



WINDING DETAILS



TYPICAL LOOP CONNECTIONS

Dashed lines represent the pull box

ABBREVIATIONS:

- S - START
- F - FINISH

STATE OF CALIFORNIA
DEPARTMENT OF TRANSPORTATION
**ELECTRICAL SYSTEMS
(LOOP DETECTORS)**

NO SCALE

RSP ES-5A DATED OCTOBER 30, 2015 SUPERSEDES STANDARD PLAN ES-5A DATED MAY 20, 2011 - PAGE 448 OF THE STANDARD PLANS BOOK DATED 2010.

REVISED STANDARD PLAN RSP ES-5A