
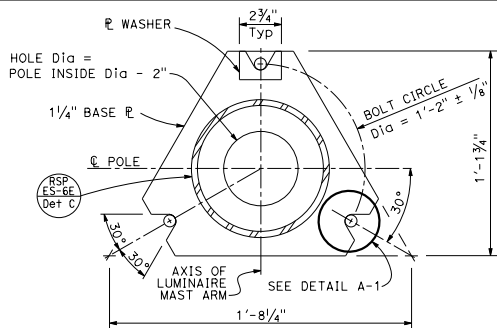


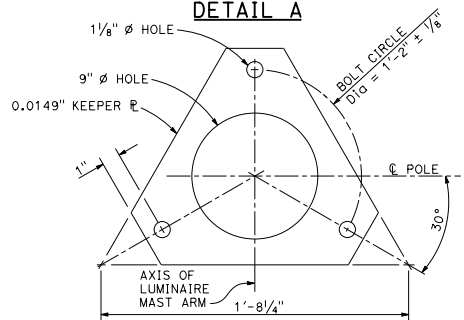
DIST	COUNTY	ROUTE	POST MILES TOTAL PROJECT	SHEET NO.	TOTAL SHEETS



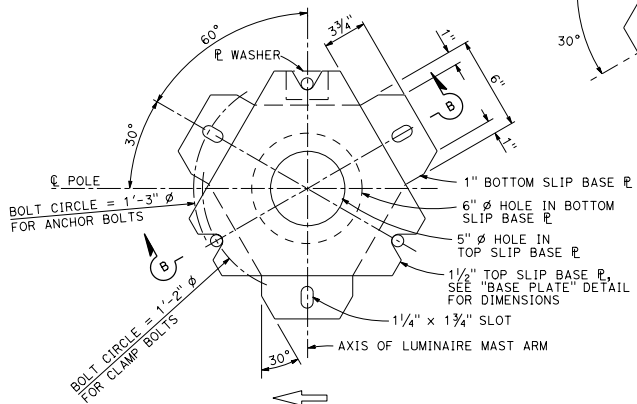
 Stanley P. Johnson
 REGISTERED CIVIL ENGINEER
 October 30, 2015
 PLANS APPROVAL DATE
 THE STATE OF CALIFORNIA OR ITS OFFICERS OR AGENTS SHALL NOT BE RESPONSIBLE FOR THE ACCURACY OR COMPLETENESS OF SCANNED COPIES OF THIS PLAN SHEET.



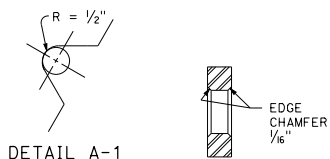
**BASE PLATE
DETAIL A**



**KEEPER PLATE
DETAIL B**

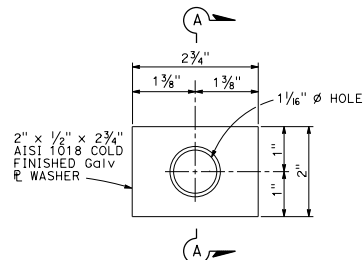


**BOTTOM PLATE
DETAIL C**

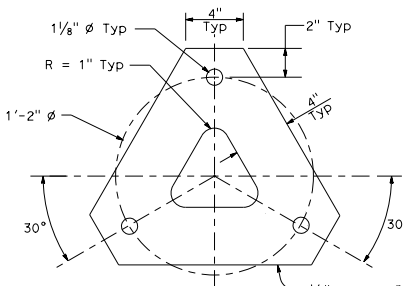


DETAIL A-1

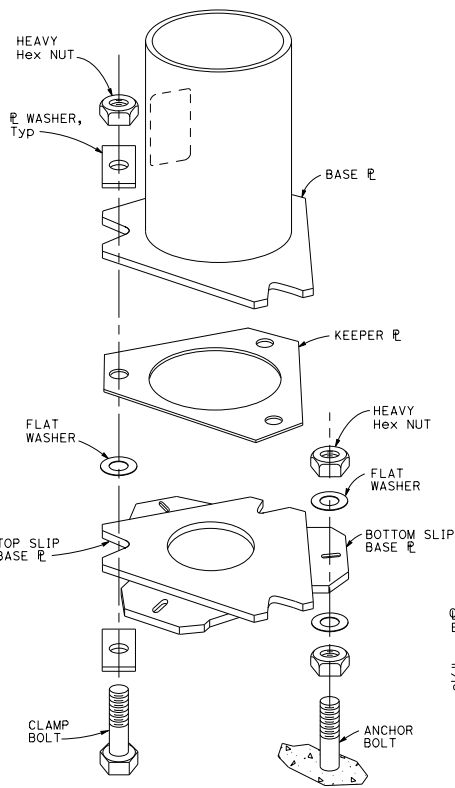
SECTION A-A



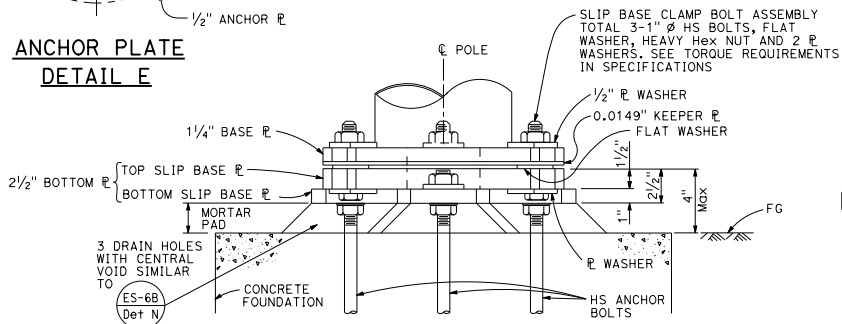
**PLATE WASHER
DETAIL D**



**ANCHOR PLATE
DETAIL E**



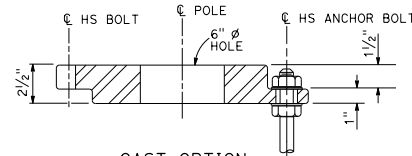
**SLIP BASE DETAIL
DETAIL F**



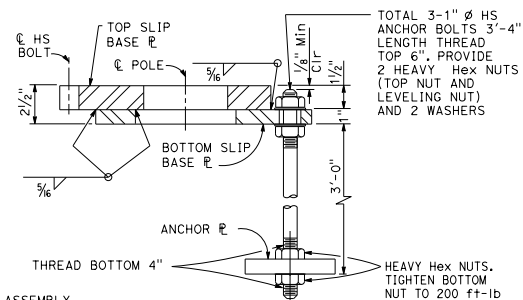
**SLIP BASE
ELEVATION A**

NOTES:

- TO ACCOMPANY PLANS DATED _____
- 1" \varnothing HS anchor bolts. For clamp bolts, see specifications.
 - Conduit shall not protrude more than 2" above top of foundation.
 - Handhole shall be located on the downstream side of traffic.
 - For Type 30 fixed base and for Type 31 fixed base, see Notes 3 and 4 on Revised Standard Plan RSP ES-6E.



CAST OPTION



WELDED OPTION

SECTION B-B

STATE OF CALIFORNIA
DEPARTMENT OF TRANSPORTATION
**ELECTRICAL SYSTEMS
(LIGHTING STANDARD,
SLIP BASE PLATE)**

NO SCALE

RSP ES-6F DATED OCTOBER 30, 2015 SUPERSEDES STANDARD PLAN ES-6F DATED MAY 20, 2011 - PAGE 457 OF THE STANDARD PLANS BOOK DATED 2010.

REVISED STANDARD PLAN RSP ES-6F

2010 REVISED STANDARD PLAN RSP ES-6F