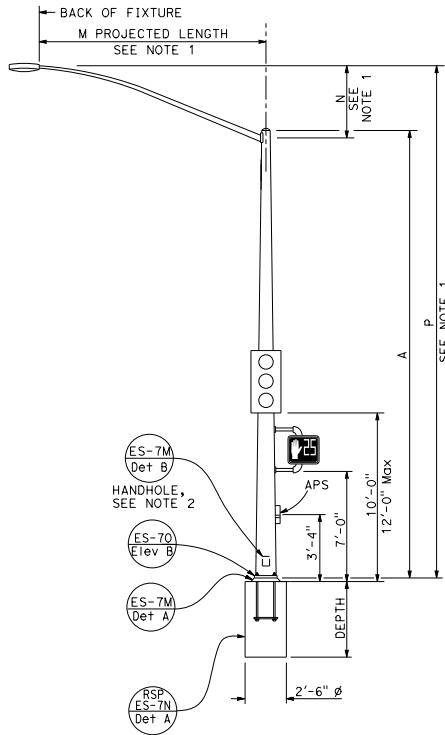
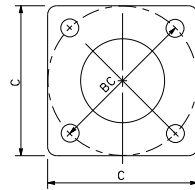


NOTES:

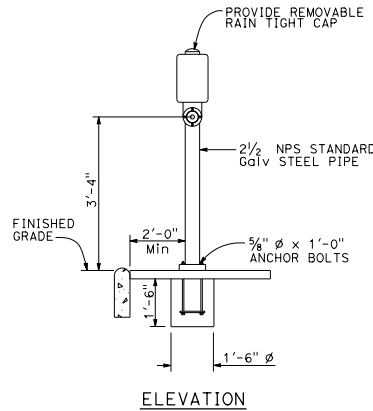
1. For additional notes, details and data for Type 15TS and Type 21TS Standards, see Revised Standard Plan RSP ES-6A.
2. Handhole shall be located on the downstream side of traffic.



TYPE 15TS AND 21TS STANDARD
ELEVATION A
(See Note 1)

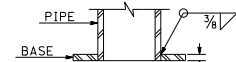


BASE PLATE
TYPE 15TS AND 21TS
DETAIL A

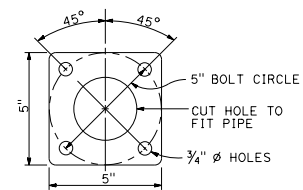


ELEVATION

PUSH BUTTON ASSEMBLY POST
DETAIL B



SECTION



BASE PLATE
PBA POST

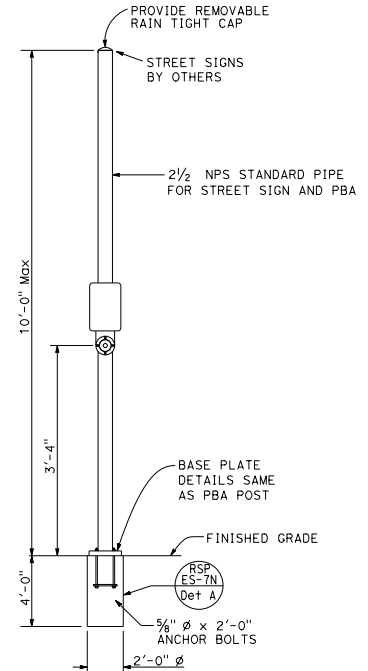
DIST	COUNTY	ROUTE	POST MILES TOTAL PROJECT	SHEET No.	TOTAL SHEETS

Stanley P. Johnson
 REGISTERED CIVIL ENGINEER
 No. CS7793
 Exp. 3-31-16
 CIVIL
 STATE OF CALIFORNIA

October 30, 2015
 PLANS APPROVAL DATE

THE STATE OF CALIFORNIA OR ITS OFFICERS OR AGENTS SHALL NOT BE RESPONSIBLE FOR THE ACCURACY OR COMPLETENESS OF SCANNED COPIES OF THIS PLAN SHEET.

TO ACCOMPANY PLANS DATED _____



COMBINED STREET SIGN
PUSH BUTTON ASSEMBLY POST
DETAIL C

POLE TYPE	POLE DATA			WALL THICKNESS	BASE PLATE DATA			ANCHOR BOLT SIZE	DEPTH
	A HEIGHT	Min OD	TOP		C	BC = BOLT CIRCLE	THICKNESS		
15TS	30'-0"	8"	3 1/8"	0.1793"	1'-1 1/2"	1'-0"	2"	1 1/2" x 42"	7'-6"
21TS	35'-0"	9 3/8"	3 3/8"		1'-3"	1'-2"			8'-6"

STATE OF CALIFORNIA
DEPARTMENT OF TRANSPORTATION

ELECTRICAL SYSTEMS
(SIGNAL AND LIGHTING STANDARD, TYPE TS,
AND PUSH BUTTON ASSEMBLY POST)

NO SCALE

RSP ES-7A DATED OCTOBER 30, 2015 SUPERSEDES RSP ES-7A DATED JULY 19, 2013 AND STANDARD PLAN ES-7A DATED MAY 20, 2011 - PAGE 462 OF THE STANDARD PLANS BOOK DATED 2010.

REVISED STANDARD PLAN RSP ES-7A

2010 REVISED STANDARD PLAN RSP ES-7A