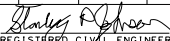
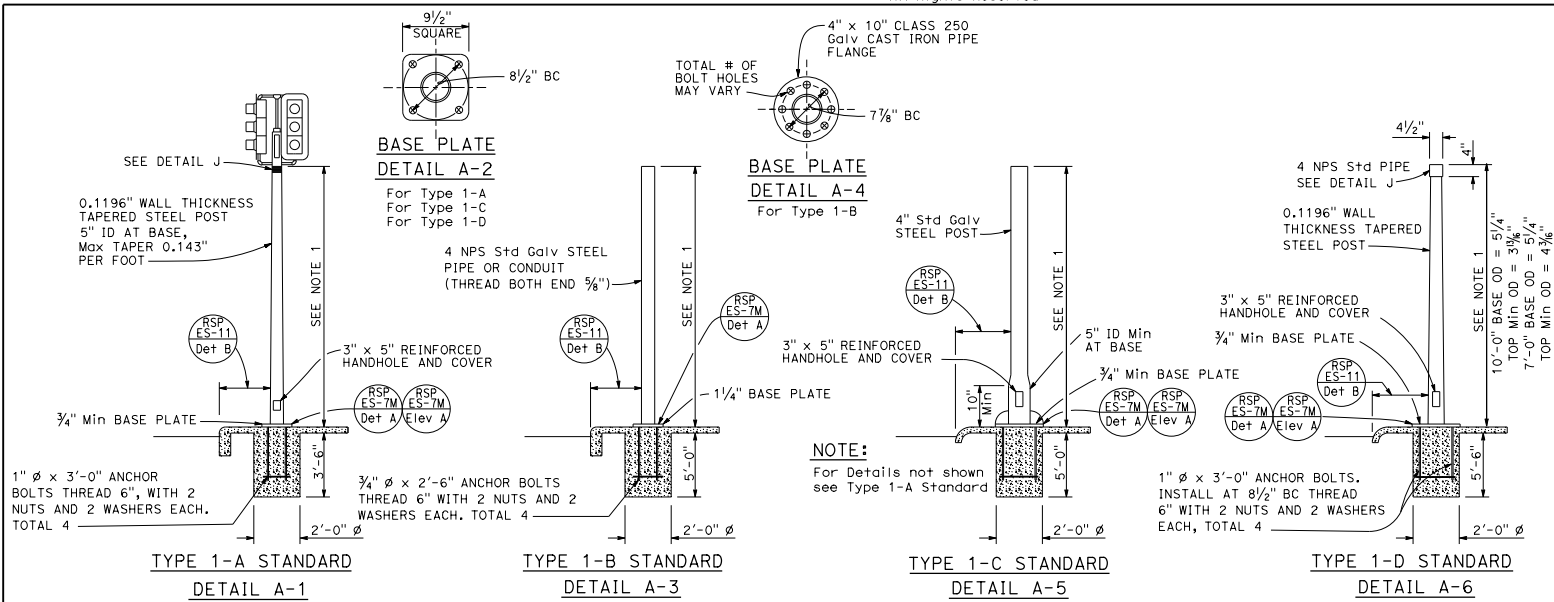


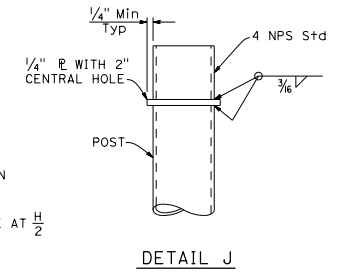
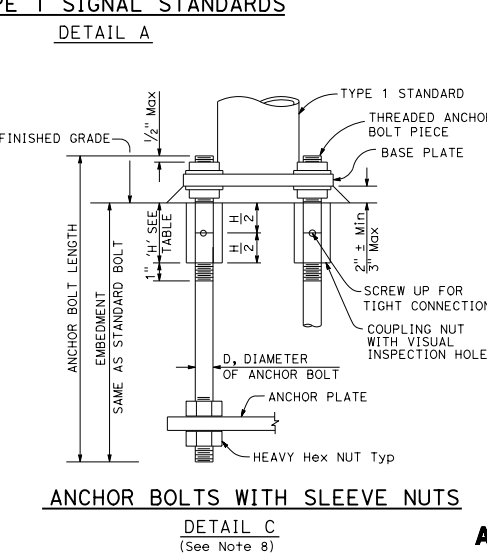
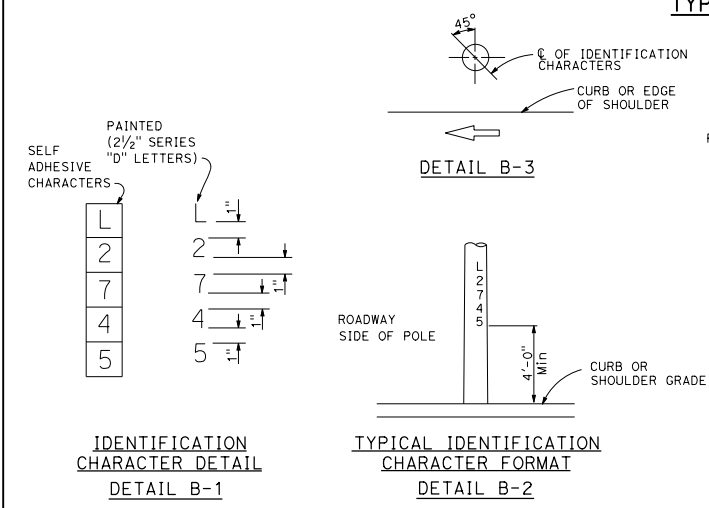
DIST	COUNTY	ROUTE	POST MILES TOTAL PROJECT	SHEET No.	TOTAL SHEETS

  
 REGISTERED CIVIL ENGINEER  
 No. CS793  
 Exp. 3-31-16  
 CIVIL  
 STATE OF CALIFORNIA

October 30, 2015  
 PLANS APPROVAL DATE  
 THE STATE OF CALIFORNIA OR ITS OFFICERS OR AGENTS SHALL NOT BE RESPONSIBLE FOR THE ACCURACY OR COMPLETENESS OF SCANNED COPIES OF THIS PLAN SHEET.



- TO ACCOMPANY PLANS DATED \_\_\_\_\_
- NOTES:**
- Standards shall be 10'-0" ± 2" for vehicle signals and 7'-0" ± 2" for pedestrian signals unless shorter pole is noted on project plans.
  - Top of standards shall be 4 1/2" OD.
  - Conduits shall extend 2" maximum above finished surface of foundation and for types 1-A, 1-C and 1-D shall be sloped toward handhole.
  - Anchor bolts shall be bonded to conduit or grounding conductor.
  - For additional notes and details, see Revised Standard Plans RSP ES-7M and RSP ES-7N.
  - Pour foundation concrete against undisturbed soil.
  - For standards with handhole, locate in the downstream side of traffic.
  - Coupling nuts to be used only when shown or specified on project plans.



**LOCATION OF EQUIPMENT IDENTIFICATION CHARACTERS ON STANDARDS AND POSTS**  
DETAIL B

**ELECTRICAL SYSTEMS (SIGNAL AND LIGHTING STANDARD, TYPE 1 AND EQUIPMENT IDENTIFICATION CHARACTERS)**

NO SCALE  
RSP ES-7B DATED OCTOBER 30, 2015 SUPERSEDES STANDARD PLAN ES-7B DATED MAY 20, 2011 - PAGE 463 OF THE STANDARD PLANS BOOK DATED 2010.  
**REVISED STANDARD PLAN RSP ES-7B**

2010 REVISED STANDARD PLAN RSP ES-7B