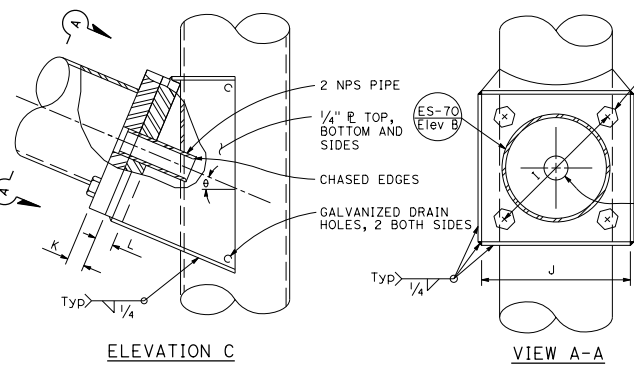
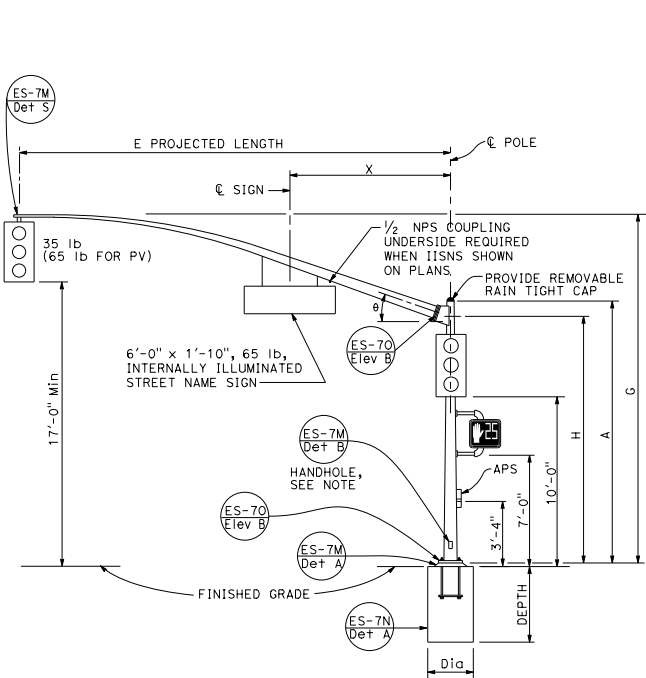


NOTE:
Handhole shall be located on the downstream side of traffic.

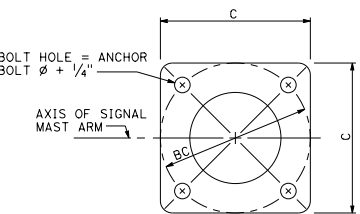
DIST	COUNTY	ROUTE	POST MILES TOTAL PROJECT	SHEET TOTAL SHEETS

October 30, 2015
 PLANS APPROVAL DATE
 TO ACCOMPANY PLANS DATED _____

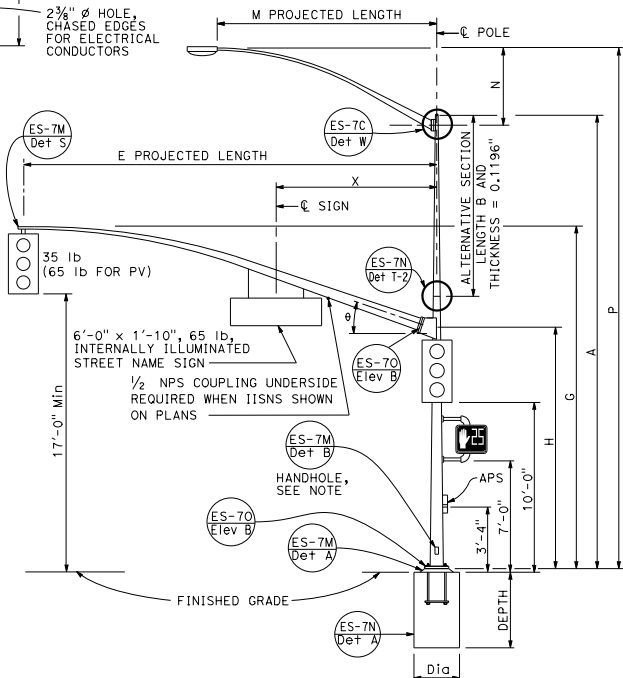
THE STATE OF CALIFORNIA OR ITS OFFICERS OR AGENTS SHALL NOT BE RESPONSIBLE FOR THE ACCURACY OR COMPLETENESS OF SCANNED COPIES OF THIS PLAN SHEET.



**SIGNAL MAST ARM CONNECTION
DETAIL A**



**BASE PLATE
DETAIL B**



**TYPE 17-2-100, 17A-2-100,
19-2-100, 19A-2-100
ELEVATION B**

E PROJECTED LENGTH	G MOUNTING HEIGHT	H	Min OD AT POLE	THICKNESS	I BOLT CIRCLE	HS CAP SCREWS	J PLATE SIZE	K MAST ARM R THICKNESS	L POLE R THICKNESS	theta	X Max
15'-0"	21'-8"±	17'-6"	7 3/8"	0.1793"	12"	1 1/4"-7NC-3"	1'-0"	1/4"	1 1/2"	23°	10'-6"
20'-0"	21'-8"±	7 3/8"	11'-6"								
25'-0"	22'-8"±	7 3/8"	10'-6"								
30'-0"	23'-0"±	8"	9'-6"								
			8'-6"								

M PROJECTED LENGTH	N RISE	Min OD AT POLE	THICKNESS	P MOUNTING HEIGHT 30'-0" POLE	35'-0" POLE
6'-0"	2'-0"±	3 1/4"	0.1196"	31'-6"±	36'-6"±
8'-0"	2'-6"±	3 1/2"		32'-0"±	37'-0"±
10'-0"	3'-3"±	3 3/8"		32'-9"±	37'-9"±
12'-0"	4'-3"±	3 7/8"		33'-9"±	38'-9"±
15'-0"	4'-9"±	4 1/4"		34'-3"±	39'-3"±

POLE TYPE	LOAD CASE	WIND VELOCITY (mph)	POLE DATA				BASE PLATE DATA				CIDH PILE FOUNDATION							
			A HEIGHT	Min OD BASE	Min OD TOP	THICKNESS	B LENGTH	BOTTOM	TOP	C	THICKNESS	ANCHOR BOLT SIZE	LUMINAIRE MAST ARM	SIGNAL MAST ARM	DIAMETER	DEPTH	REINFORCED	
16-2-100	2	100	18'-6"	8 1/8"	10 3/4"	0.1793"	NONE	7 7/8"	6 7/8"	1'-5 1/2"	1'-5 1/2"	3"	1 1/2" Ø x 42"	NONE	15'-0", 20'-0"	2'-6"	9'-0"	YES
17-2-100			30'-0"	6 7/8"			10'-0"							6'-15' [2'-0"]				
17A-2-100			35'-0"	5 1/8"			15'-0"							6'-15' [15'-0"]				
18-2-100			17'-0"	8 3/8"			NONE							None				
19-2-100			30'-0"	6 7/8"			10'-0"							6'-15' [2'-0"]				
19A-2-100	35'-0"	5 1/8"	15'-0"	6'-15' [15'-0"]														

□ INDICATES MAST ARM LENGTH TO BE USED UNLESS OTHERWISE NOTED ON PLANS.

STATE OF CALIFORNIA
 DEPARTMENT OF TRANSPORTATION
**ELECTRICAL SYSTEMS
 (SIGNAL AND LIGHTING STANDARD,
 CASE 2 SIGNAL MAST ARM LOADING,
 WIND VELOCITY=100 MPH AND SIGNAL
 MAST ARM LENGTHS 15' TO 30')**
 NO SCALE
 RSP ES-7D DATED OCTOBER 30, 2015 SUPERSEDES RSP ES-7D DATED JULY 19, 2013
 AND STANDARD PLAN ES-7D DATED MAY 20, 2011
 PAGE 465 OF THE STANDARD PLANS BOOK DATED 2010.

REVISED STANDARD PLAN RSP ES-7D

2010 REVISED STANDARD PLAN RSP ES-7D