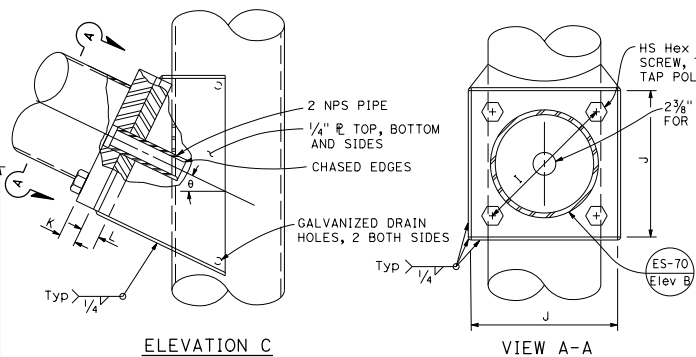
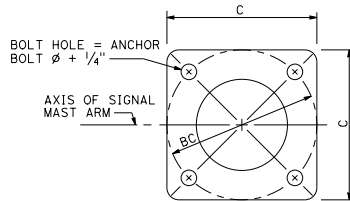


**TYPE 16-3-100, 18-3-100,  
23-3-100, 27-3-100**  
ELEVATION A



**SIGNAL MAST ARM CONNECTION  
DETAIL A**

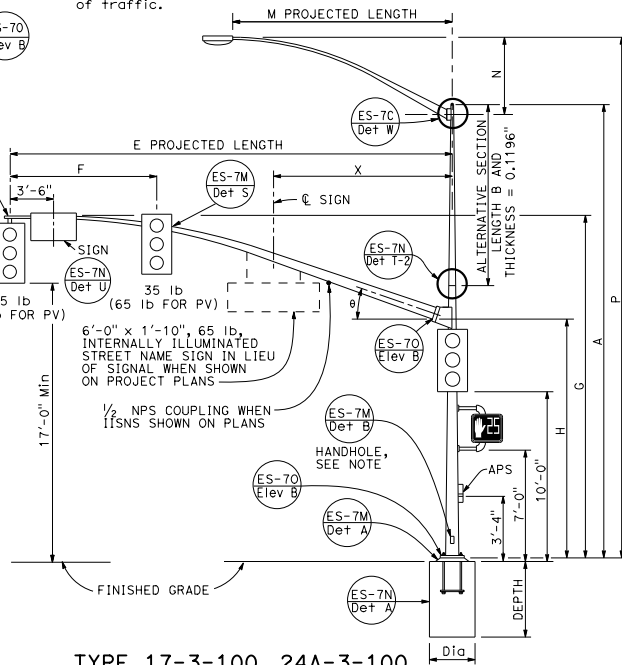


**BASE PLATE  
DETAIL B**

**NOTE:**

Handhole shall be located on the downstream side of traffic.

TO ACCOMPANY PLANS DATED \_\_\_\_\_



**TYPE 17-3-100, 24A-3-100,  
19-3-100, 26-3-100,  
19A-3-100, 26A-3-100, 24-3-100**  
ELEVATION B

E PROJECTED LENGTH	F Min SPACING	G MOUNTING HEIGHT	H	Min OD AT POLE	THICKNESS	I BOLT CIRCLE	HS CAP SCREWS	J PLATE SIZE	K MAST ARM THICKNESS	L POLE THICKNESS	θ	X Max	
15'-0"	8'-0"	21'-8"±	17'-6"	7 7/8"	0.1793"	12"	1 1/4"-7NC-3"	1'-0"	1 1/4"	1 1/2"	23°	-	
20'-0"		21'-8"±		7 7/8"									
25'-0"	12'-0"	22'-8"±		7 7/8"									
30'-0"		22'-8"±		8"	0.2391"	13"		1'-1"	1 1/2"	1 3/4"	21°	10'-6"	
35'-0"	14'-0"	23'-0"±	16'-0"	8 3/4"									
40'-0"		23'-8"±		9 1/8"									
45'-0"	15'-0"			10 1/8"									

M PROJECTED LENGTH	N RISE	Min OD AT POLE	THICKNESS	P MOUNTING HEIGHT
6'-0"	2'-0"±	3 1/4"	0.1196"	30'-0" POLE
8'-0"	2'-6"±	3 1/2"		31'-6"±
10'-0"	3'-3"±	3 3/4"		32'-0"±
12'-0"	4'-3"±	3 3/4"		32'-9"±
15'-0"	4'-9"±	4 1/4"		33'-9"±
				34'-3"±

POLE TYPE	LOAD CASE	WIND VELOCITY (mph)	POLE DATA				BASE PLATE DATA				CIDH PILE FOUNDATION							
			A HEIGHT	Min OD		THICKNESS	ALTERNATIVE SECTION			C	BC = BOLT CIRCLE	THICKNESS	ANCHOR BOLT SIZE	LUMINAIRE MAST ARM	SIGNAL MAST ARM	DIAMETER	DEPTH	REINFORCED
				BASE	TOP		B LENGTH	BOTTOM	TOP									
16-3-100	3	100	18'-6"	8 1/8"	0.1793"	NONE	10'-0"	7 7/8"	6 7/8"	1'-5 1/2"	3"	2" Ø x 42"	NONE	15'-0"	3'-0"	11'-0"	YES	
17-3-100			30'-0"	10 3/4"		6 7/8"	10'-0"	7 7/8"	6 7/8"	6'-15' [12'-0"]			20'-0"					
18-3-100			17'-0"	8 7/8"		NONE	10'-0"	7 7/8"	6 7/8"	NONE			25'-0"					
19-3-100			30'-0"	7 7/8"	10'-0"	9 1/8"	7 7/8"	6 7/8"	6'-15' [12'-0"]	30'-0"								
19A-3-100			35'-0"	6 5/8"	15'-0"	9 1/8"	7 7/8"	6 7/8"	6'-15' [15'-0"]									
23-3-100			17'-0"	9 1/8"	NONE	10'-0"	7 7/8"	6 7/8"	NONE									
24-3-100			30'-0"	7 7/8"	10'-0"	9 1/8"	7 7/8"	6 7/8"	6'-15' [12'-0"]	35'-0"								
24A-3-100			35'-0"	6 5/8"	15'-0"	9 1/8"	7 7/8"	6 7/8"	6'-15' [15'-0"]									
26-3-100			30'-0"	7 7/8"	10'-0"	9 1/8"	7 7/8"	6 7/8"	6'-15' [12'-0"]									
26A-3-100			35'-0"	7 7/8"	15'-0"	9 1/4"	7 7/8"	6 7/8"	6'-15' [15'-0"]	40'-0"								
27-3-100	17'-0"	9 1/8"	NONE	10'-0"	7 7/8"	6 7/8"	NONE	45'-0"										

□ INDICATES MAST ARM LENGTH TO BE USED UNLESS OTHERWISE NOTED ON PLANS.

**REVISED STANDARD PLAN RSP ES-7E**

NO SCALE  
RSP ES-7E DATED OCTOBER 30, 2015 SUPERSEDES RSP ES-7E DATED JULY 19, 2013 AND ES-7E DATED MAY 20, 2011 - PAGE 466 OF THE STANDARD PLANS BOOK DATED 2010.

DIST	COUNTY	ROUTE	POST MILES TOTAL PROJECT	SHEET No.	TOTAL SHEETS

Stanley P. Johnson  
REGISTERED CIVIL ENGINEER  
No. C57193  
Exp. 3-31-16  
CIVIL

October 30, 2015  
PLANS APPROVAL DATE

THE STATE OF CALIFORNIA OR ITS OFFICERS OR AGENTS SHALL NOT BE RESPONSIBLE FOR THE ACCURACY OR COMPLETENESS OF SCANNED COPIES OF THIS PLAN SHEET.