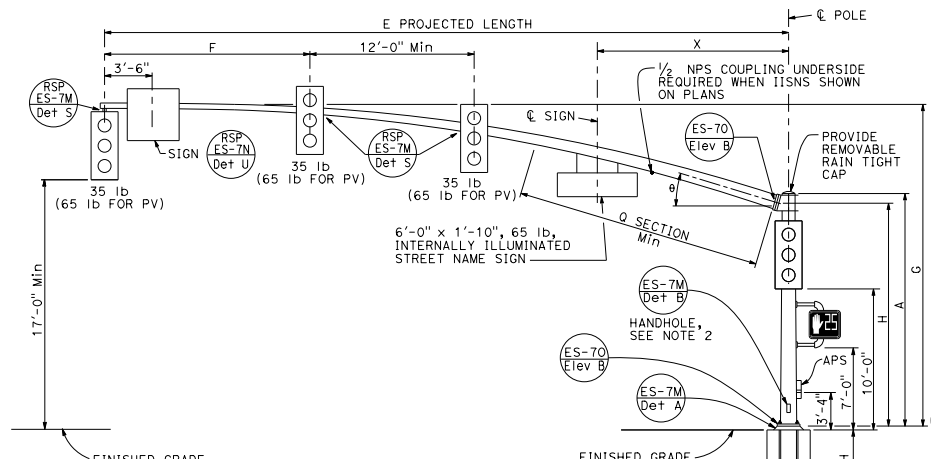


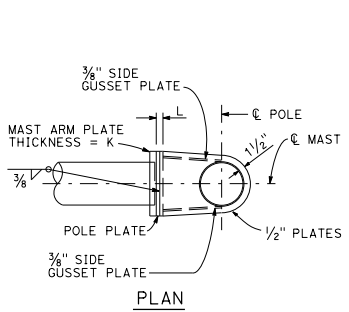
DIST	COUNTY	ROUTE	POST MILES TOTAL PROJECT	SHEET NO.	TOTAL SHEETS

October 30, 2015
 PLANS APPROVAL DATE
 THE STATE OF CALIFORNIA OR ITS OFFICERS OR AGENTS SHALL NOT BE RESPONSIBLE FOR THE ACCURACY OR COMPLETENESS OF SCANNED COPIES OF THIS PLAN SHEET.

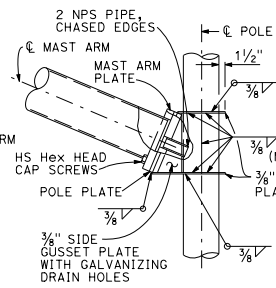
TO ACCOMPANY PLANS DATED _____



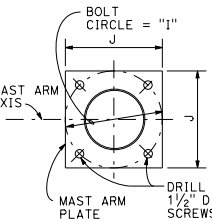
TYPE 60-5-100
ELEVATION A



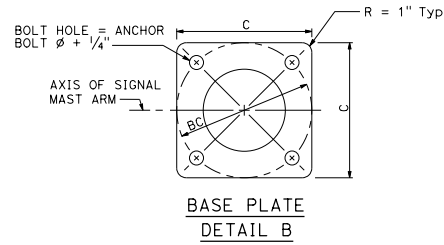
PLAN



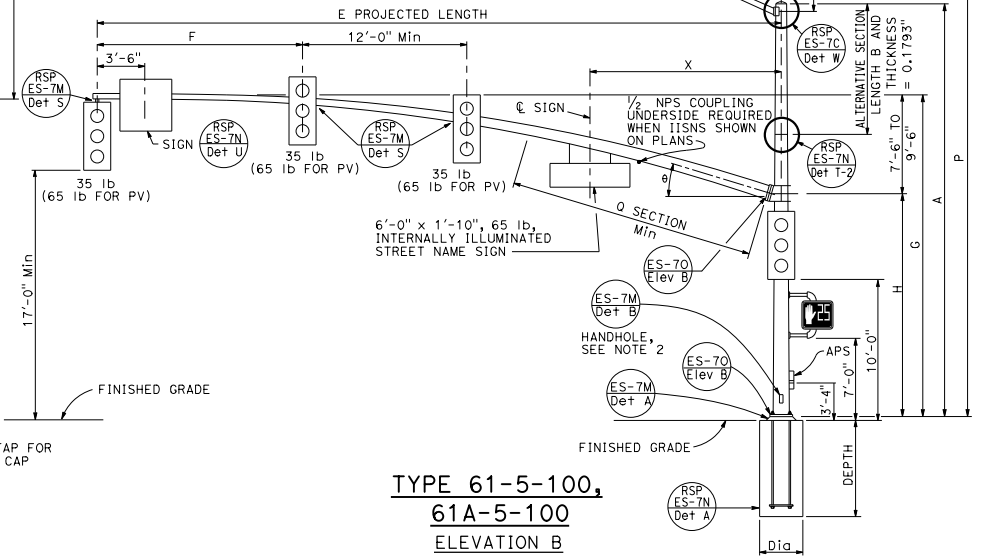
ELEVATION
(See Note 1)



MAST ARM PLATE



BASE PLATE
DETAIL B



TYPE 61-5-100,
61A-5-100
ELEVATION B

E PROJECTED LENGTH	F Min SPACING	G MOUNTING HEIGHT	H	Min OD AT POLE	THICKNESS	I BOLT CIRCLE	HS CAP SCREWS	J PLATE SIZE	K MAST ARM THICKNESS	L Pole THICKNESS	θ	Q SECTION		X Max
												LENGTH	THICKNESS	
60'-0"	15'-0"	23'-7" TO 25'-7"	16'-0"	1'-1 1/2"	0.1793"	20"	1 1/2"-6NC-4"	1'-8"	2"	2"	15°	24'-0"	0.2391"	14'-0"
65'-0"					0.2391"							29'-0"	0.3125"	

M PROJECTED LENGTH	N RISE	Min OD AT POLE	THICKNESS	P MOUNTING HEIGHT
6'-0"	2'-0"±	3/4"	0.1196"	30'-0" POLE
8'-0"	2'-6"±	3/2"		35'-0" POLE
10'-0"	3'-3"±	3 3/8"		31'-6"±
12'-0"	4'-3"±	4"		36'-6"±
15'-0"	4'-9"±	4 1/4"		32'-0"±
				37'-0"±
				32'-9"±
				37'-9"±
				33'-9"±
				38'-9"±
				34'-3"±
				39'-3"±

NOTES:

- The radial separation between the face of the pole and the adjacent insides of the top and bottom gusset plates shall not exceed 3/16". Fillet weld size to be increased by amount of gap.
- Handhole shall be located on the downstream side of traffic.

POLE TYPE	LOAD CASE	WIND VELOCITY (mph)	POLE DATA		BASE PLATE DATA				LUMINAIRE MAST ARM	SIGNAL MAST ARM	CIDH PILE FOUNDATION				
			HEIGHT	Min OD		C	BC = BOLT CIRCLE	THICKNESS			ANCHOR BOLT SIZE	DIAMETER	DEPTH	REINFORCED	
				BASE	TOP										
60-5-100			17'-0"	16"	1'-1 1/2"	0.3125"	2'-0"	1'-11"	3"	2 1/2" ø x 60"	NONE	60'-0"	3'-6"	13'-0"	YES
61-5-100	5	100	30'-0"	16"	11 1/8"						6'-15" [15'-0"]	60'-0"	3'-6"	13'-0"	YES
61A-5-100			35'-0"	16"	10 5/8"										

INDICATES MAST ARM LENGTH TO BE USED UNLESS OTHERWISE NOTED ON PLANS.

STATE OF CALIFORNIA
DEPARTMENT OF TRANSPORTATION

ELECTRICAL SYSTEMS
(SIGNAL AND LIGHTING STANDARD,
CASE 5 SIGNAL MAST ARM LOADING,
WIND VELOCITY=100 MPH AND SIGNAL
MAST ARM LENGTHS 60' TO 65')

NO SCALE

RSP ES-7H DATED OCTOBER 30, 2015 SUPERSEDES RSP ES-7H DATED JULY 19, 2013 AND ES-7H DATED MAY 20, 2011 - PAGE 469 OF THE STANDARD PLANS BOOK DATED 2010.

REVISED STANDARD PLAN RSP ES-7H

2010 REVISED STANDARD PLAN RSP ES-7H