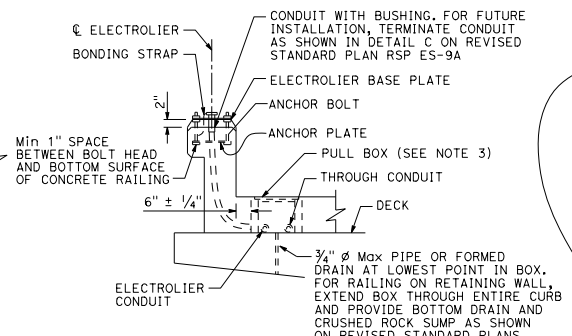


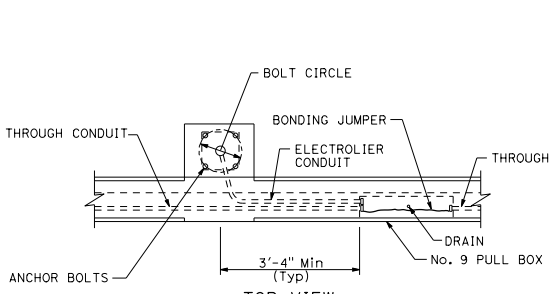
TOP VIEW



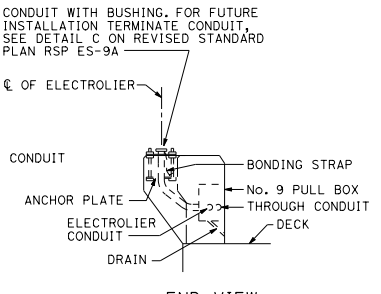
END VIEW

**No. 3/2, 5, OR 6 PULL BOX INSTALLATION**

DETAIL A



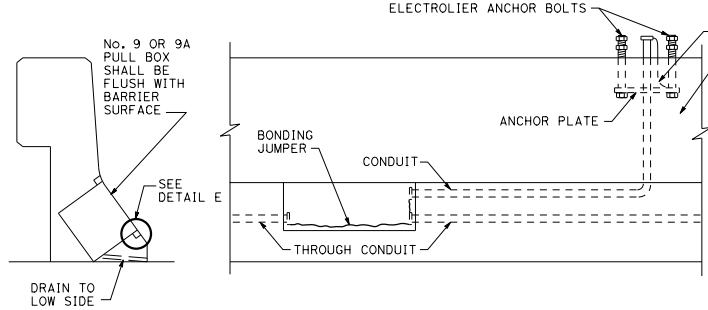
TOP VIEW



END VIEW

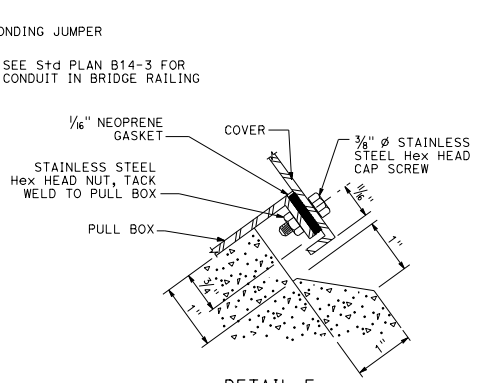
**No. 9 PULL BOX INSTALLATION**

DETAIL B

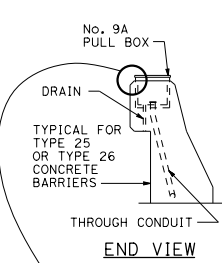


**INSTALLATION IN SLOPING PARAPETS**

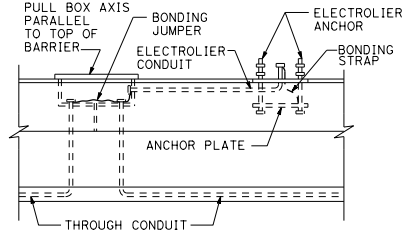
DETAIL D



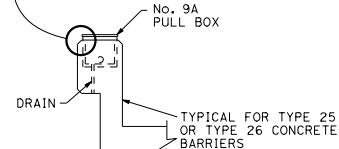
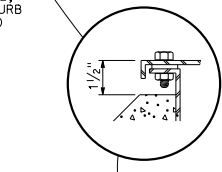
DETAIL E



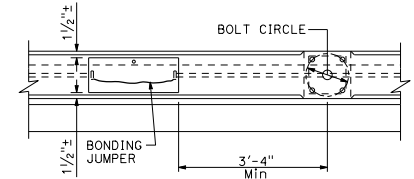
END VIEW



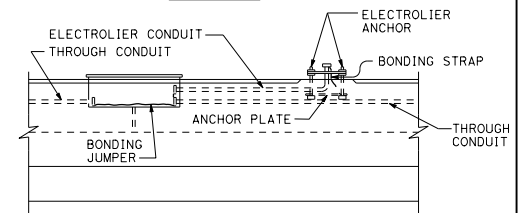
SIDE VIEW



END VIEW



TOP VIEW



SIDE VIEW

**No. 9A PULL BOX INSTALLATION**

DETAIL C

**NOTES:**

1. Axis of pull box shall be parallel to top of barrier, sidewalk or railing.
2. See railing sheet for reinforcement and structural details at electroliers and pull boxes.
3. Top of pull boxes in sidewalk areas shall be flush with sidewalk. Modify base of pull box as required.
4. Boxes inside of vertical barrier or railing shall be closed during pouring of PCC with 1/4\"/>

STATE OF CALIFORNIA  
DEPARTMENT OF TRANSPORTATION

**ELECTRICAL SYSTEMS  
(STRUCTURE PULL BOX  
INSTALLATIONS)**

NO SCALE

RSP ES-9D DATED OCTOBER 30, 2015 SUPERSEDES STANDARD PLAN ES-9D DATED MAY 20, 2011 - PAGE 484 OF THE STANDARD PLANS BOOK DATED 2010.

**REVISED STANDARD PLAN RSP ES-9D**

DIST	COUNTY	ROUTE	POST MILES TOTAL PROJECT	SHEET NO.	TOTAL SHEETS

Theresa Gabriel  
REGISTERED ELECTRICAL ENGINEER  
No. E15129  
Exp. 6-30-16  
ELECTRICAL  
STATE OF CALIFORNIA

October 30, 2015  
PLANS APPROVAL DATE  
THE STATE OF CALIFORNIA OR ITS OFFICERS OR AGENTS SHALL NOT BE RESPONSIBLE FOR THE ACCURACY OR COMPLETENESS OF SCANNED COPIES OF THIS PLAN SHEET.

TO ACCOMPANY PLANS DATED \_\_\_\_\_

2010 REVISED STANDARD PLAN RSP ES-9D