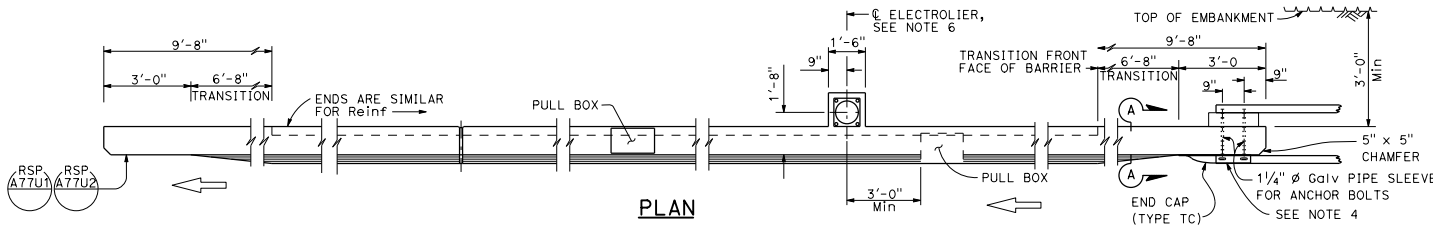


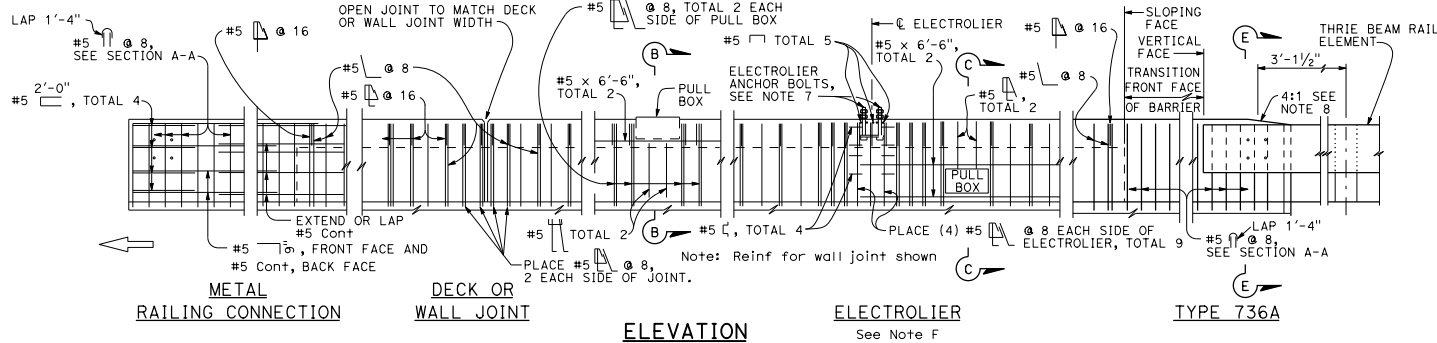
DIST	COUNTY	ROUTE	POST MILES TOTAL PROJECT	SHEET NO.	TOTAL SHEETS

REGISTERED CIVIL ENGINEER	
Tillot Satter	
No. C42892	
Exp. 3-31-18	
CIVIL	
STATE OF CALIFORNIA	

July 15, 2016
PLANS APPROVAL DATE
THE STATE OF CALIFORNIA OR ITS OFFICERS OR AGENTS SHALL NOT BE RESPONSIBLE FOR THE ACCURACY OR COMPLETENESS OF SCANNED COPIES OF THIS PLAN SHEET.



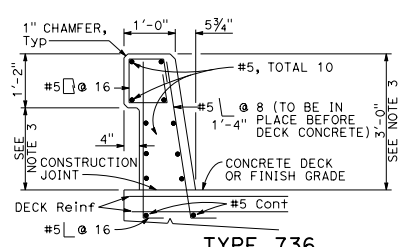
PLAN



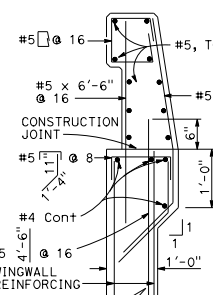
ELEVATION

ELECTROLIER
See Note F

TYPE 736A



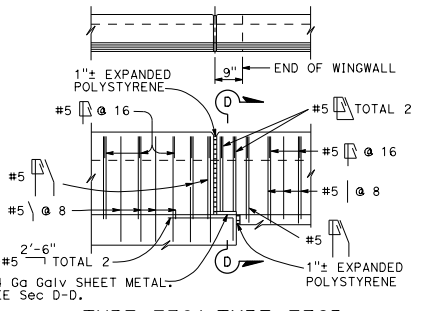
TYPE 736



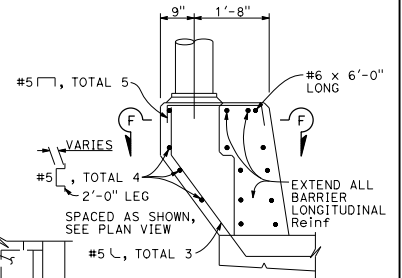
TYPE 736A

TYPE 736B

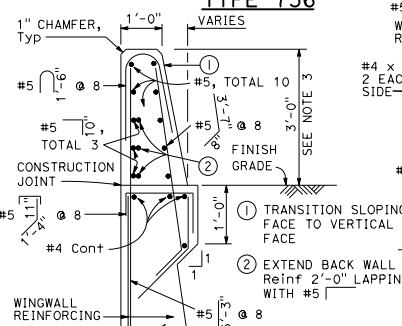
Note: Types 736A & 736B are similar to Type 736 except as noted



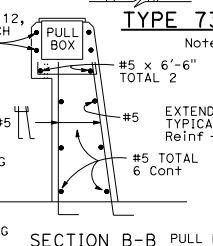
TYPE 736A TYPE 736B



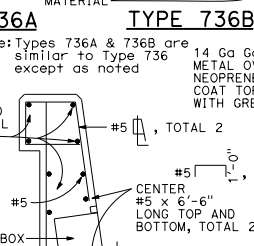
PEDESTAL ELEVATION



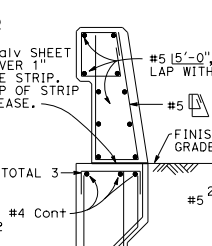
SECTION A-A



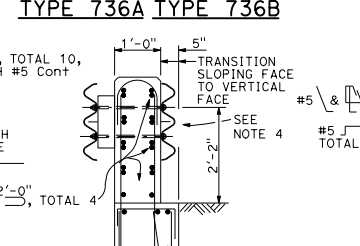
SECTION B-B



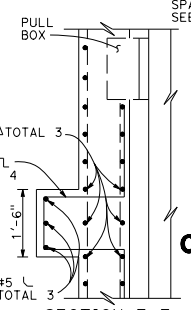
SECTION C-C
See Notes



SECTION D-D



SECTION E-E
See Notes



SECTION F-F

STATE OF CALIFORNIA
DEPARTMENT OF TRANSPORTATION
**CONCRETE BARRIER
TYPE 736**
NO SCALE

RSP B11-55 DATED JULY 15, 2016 SUPERSEDES RSP B11-56 DATED NOVEMBER 15, 2013 AND RSP B11-56 DATED JULY 19, 2013 AND STANDARD PLAN B11-56 DATED MAY 20, 2011 - PAGE 298 OF THE STANDARD PLANS BOOK DATED 2010.

REVISED STANDARD PLAN RSP B11-56

2010 REVISED STANDARD PLAN RSP B11-56

Details shown for barrier anchorage to Type 736A. Anchorage for barrier Types 736 and 736B are similar to their respective details.