

Dist	COUNTY	ROUTE	POST MILES TOTAL PROJECT	SHEET NO.	TOTAL SHEETS

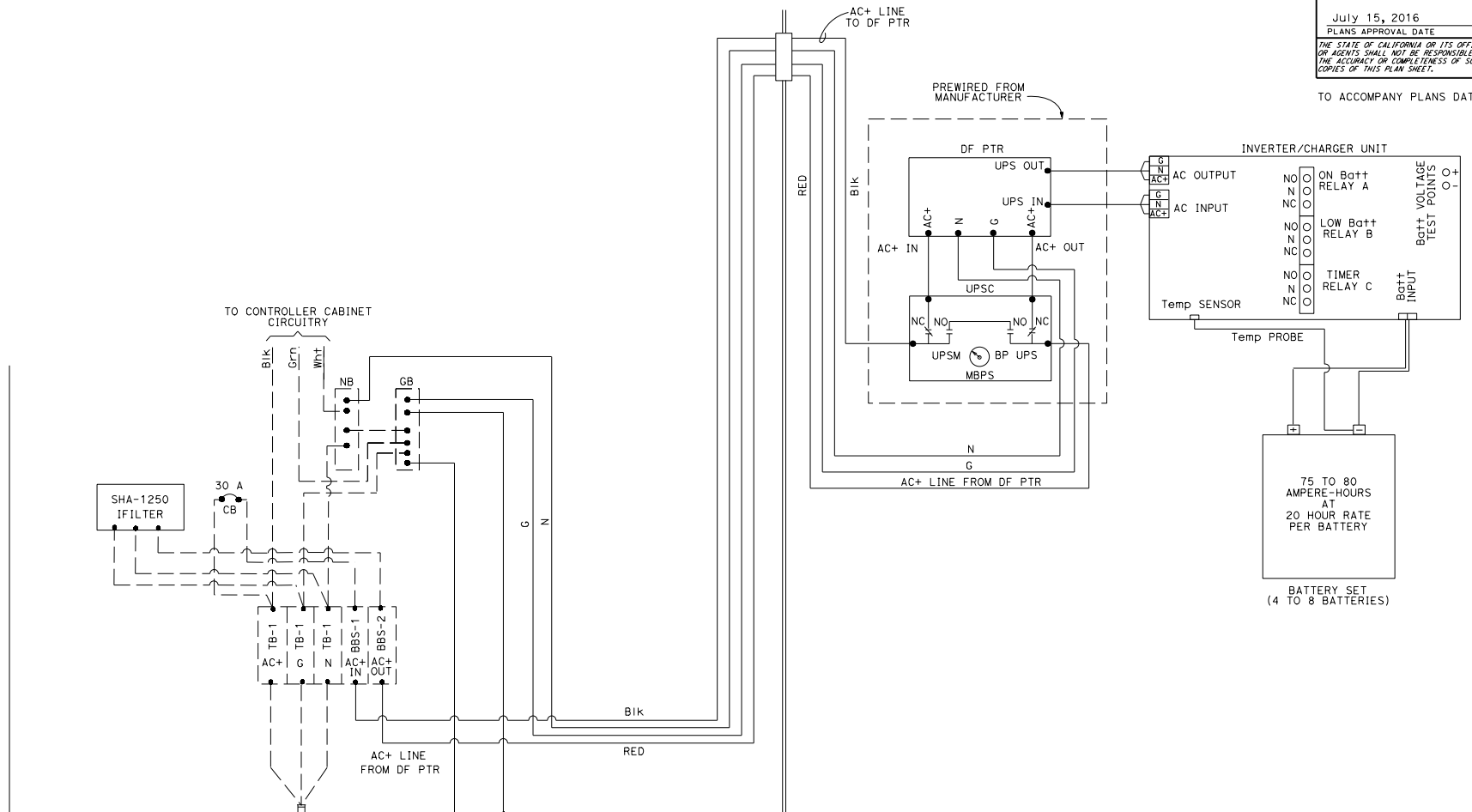
Theresa Gabriel
REGISTERED ELECTRICAL ENGINEER

July 15, 2016
PLANS APPROVAL DATE

Theresa
Aziz Gabriel
No. E15129
Exp. 6-30-18
REGISTERED PROFESSIONAL ENGINEER
ELECTRICAL
STATE OF CALIFORNIA

THE STATE OF CALIFORNIA OR ITS OFFICERS
OR AGENTS SHALL NOT BE RESPONSIBLE FOR
THE ACCURACY OR COMPLETENESS OF SCANNED
COPIES OF THIS PLAN SHEET.

TO ACCOMPANY PLANS DATED _____



SINGLE-PHASE, 120 V
2-WIRE CKT FROM
SERVICE EQUIPMENT
ENCLOSURE

CONTROLLER CABINET

BBS CABINET

STATE OF CALIFORNIA
DEPARTMENT OF TRANSPORTATION

**ELECTRICAL SYSTEMS
(ELECTRONICS ASSEMBLY CONNECTION DIAGRAM,
WITHOUT BYPASS CONTROL LINE)**

NO SCALE

RSP ES-3K DATED JULY 15, 2016 SUPERSEDES RSP ES-3K DATED APRIL 15, 2016 AND RSP ES-3K
DATED OCTOBER 30, 2015 THAT SUPPLEMENTS THE STANDARD PLANS BOOK DATED 2010.

REVISED STANDARD PLAN RSP ES-3K

2010 REVISED STANDARD PLAN RSP ES-3K