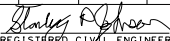
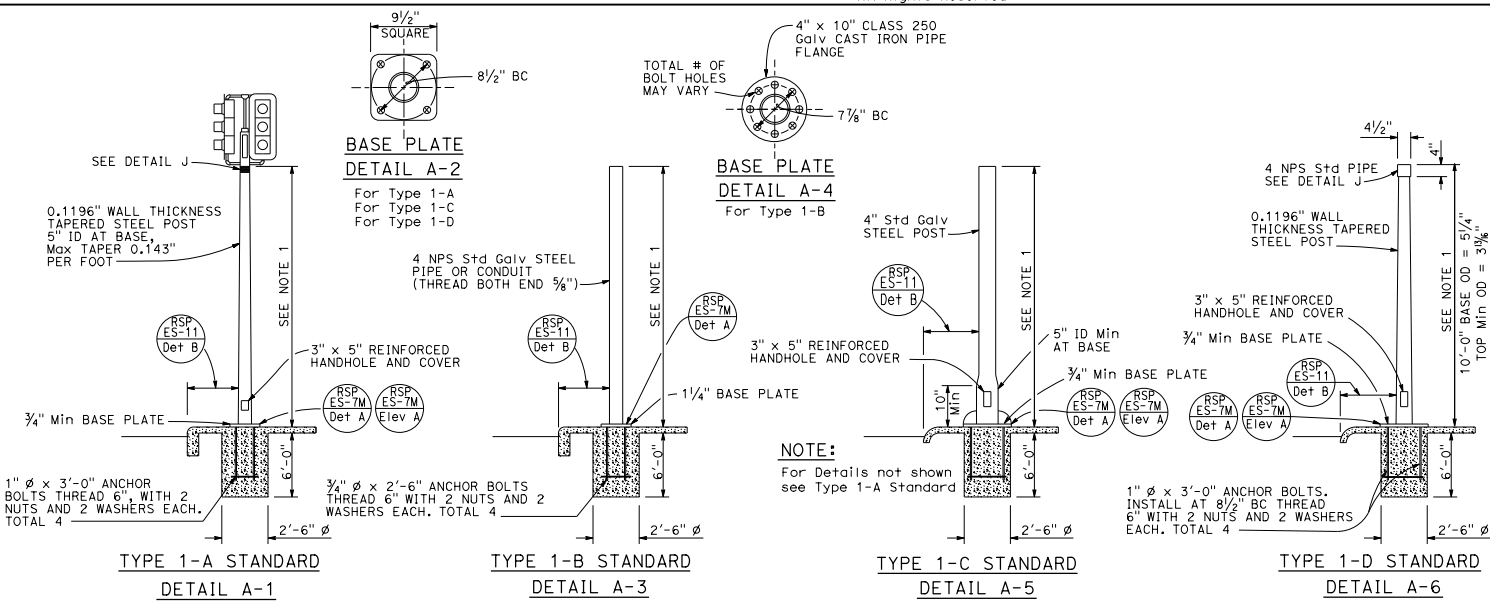


DIST	COUNTY	ROUTE	POST MILES TOTAL PROJECT	SHEET NO.	TOTAL SHEETS
 REGISTERED CIVIL ENGINEER					
July 15, 2016 PLANS APPROVAL DATE					
Stanley P. Johnson No. C5793 Exp. 3-31-18 CIVIL STATE OF CALIFORNIA					

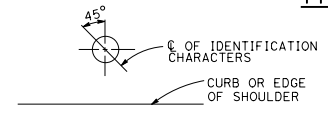
TO ACCOMPANY PLANS DATED \_\_\_\_\_

**NOTES:**

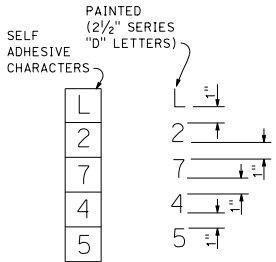
- Standards shall be 10'-0" ± 2" for vehicle signals and 7'-0" ± 2" for pedestrian signals unless shorter pole is noted on project plans.
- Top of standards shall be 4 1/2" OD.
- Conduits shall extend 2" maximum above finished surface of foundation and for Types 1-A, 1-C and 1-D shall be sloped toward handhole.
- Anchor bolts shall be bonded to conduit or grounding conductor.
- For additional notes and details, see Revised Standard Plans RSP ES-7M and RSP ES-7N.
- Pour foundation concrete against undisturbed soil.
- For standards with handhole, locate in the downstream side of traffic.
- Coupling nuts to be used only when shown or specified on project plans.



**TYPE 1 SIGNAL STANDARDS DETAIL A**



**DETAIL B-3**

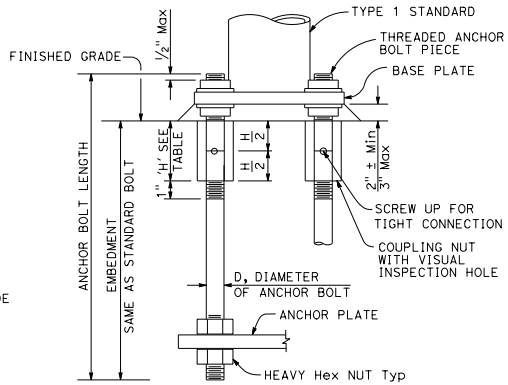


**IDENTIFICATION CHARACTER DETAIL DETAIL B-1**

**TYPICAL IDENTIFICATION CHARACTER FORMAT DETAIL B-2**

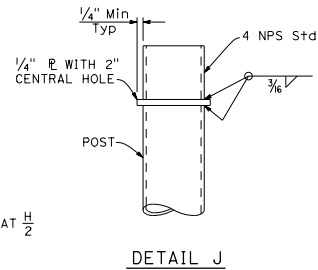
**LOCATION OF EQUIPMENT IDENTIFICATION CHARACTERS ON STANDARDS AND POSTS**

**DETAIL B**



**ANCHOR BOLTS WITH SLEEVE NUTS**

**DETAIL C (See Note 8)**



**DETAIL J**

BOLT DIAMETER	NUT TABLE THICKNESS 'H'
3/4"	2 1/4"
1"	3"

**ELECTRICAL SYSTEMS (SIGNAL AND LIGHTING STANDARD, TYPE 1 AND EQUIPMENT IDENTIFICATION CHARACTERS)**

NO SCALE

RSP ES-7B DATED JULY 15, 2016 SUPERSEDES RSP ES-7B DATED OCTOBER 30, 2015 AND STANDARD PLAN ES-7B DATED MAY 20, 2011 - PAGE 463 OF THE STANDARD PLANS BOOK DATED 2010.

**REVISED STANDARD PLAN RSP ES-7B**

2010 REVISED STANDARD PLAN RSP ES-7B