

DIST	COUNTY	ROUTE	POST MILES TOTAL PROJECT	SHEET NO.	TOTAL SHEETS

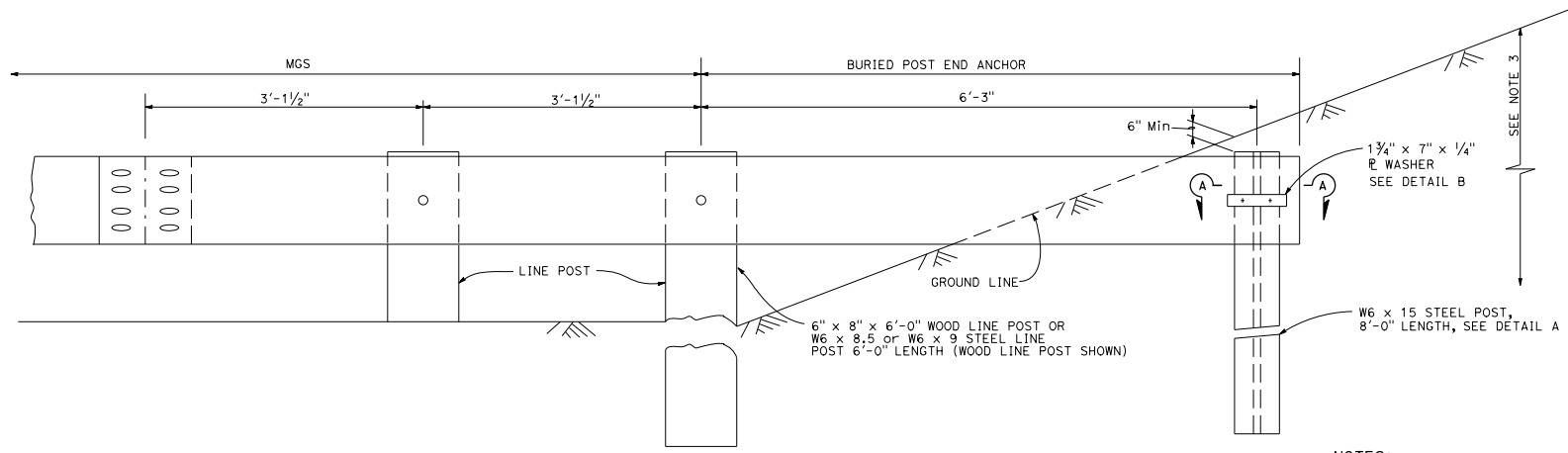
*Randell D. Hiatt*  
REGISTERED CIVIL ENGINEER

January 20, 2017  
PLANS APPROVAL DATE

REGISTERED PROFESSIONAL ENGINEER  
Randell D. Hiatt  
No. C50200  
Exp. 6-30-17  
CIVIL  
STATE OF CALIFORNIA

THE STATE OF CALIFORNIA OR ITS OFFICERS OR AGENTS SHALL NOT BE RESPONSIBLE FOR THE ACCURACY OR COMPLETENESS OF SCANNED COPIES OF THIS PLAN SHEET.

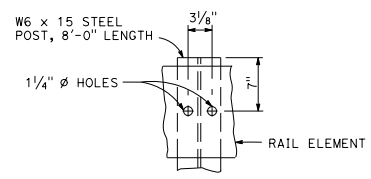
TO ACCOMPANY PLANS DATED \_\_\_\_\_



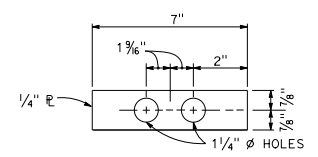
**BURIED POST END ANCHOR**  
See Note 3

**NOTES:**

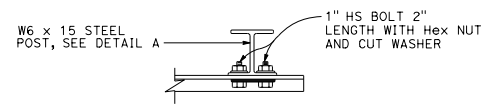
1. For typical use of this type of end anchor with MGS see the A77P, A77Q and A77R Series of the Standard Plans.
2. Holes excavation in the slope to construct the buried post end anchor shall be backfilled with selected earth, placed in layers approximately 1'-0" thick. Each layer shall be moistened and thoroughly compacted.
3. The buried post end anchor shall only be constructed at those locations where the slope perpendicular to the roadway is non-traversable.



**DETAIL A**



**DETAIL B**



**SECTION A-A**

STATE OF CALIFORNIA  
DEPARTMENT OF TRANSPORTATION  
**MIDWEST GUARDRAIL SYSTEM  
BURIED POST END ANCHOR**

NO SCALE

RSP A77T2 DATED JANUARY 20, 2017 SUPERSEDES RSP A77T2 DATED NOVEMBER 15, 2013 AND RSP A77T2 DATED JULY 19, 2013 THAT SUPPLEMENTS THE STANDARD PLANS BOOK DATED 2010.

**REVISED STANDARD PLAN RSP A77T2**

2010 REVISED STANDARD PLAN RSP A77T2