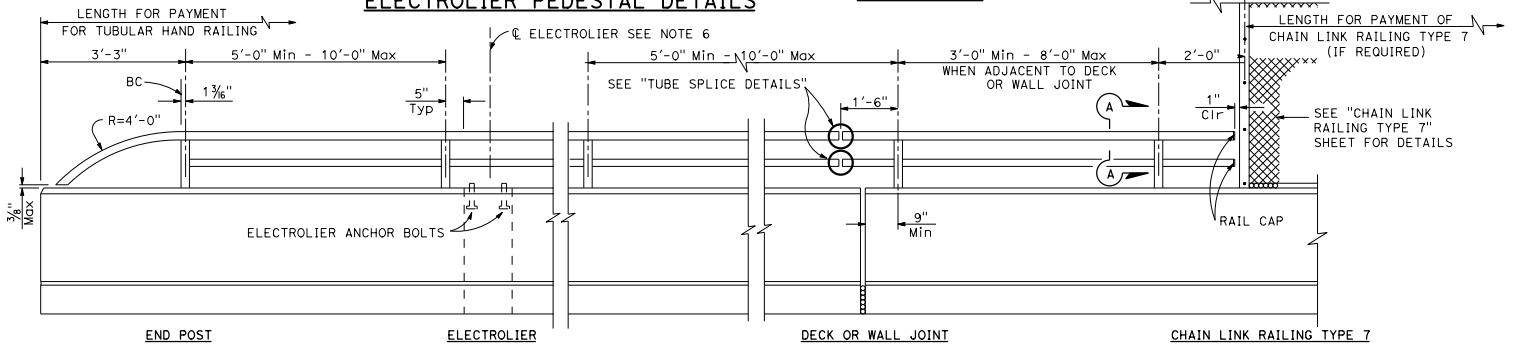
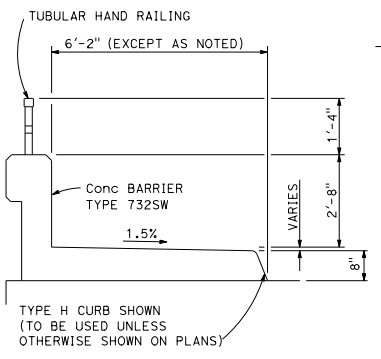
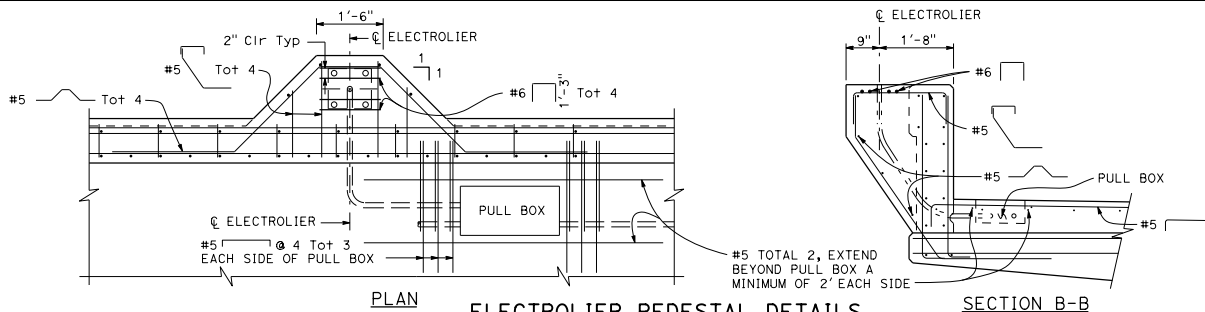


DIST	COUNTY	ROUTE	POST MILES TOTAL PROJECT	SHEET TOTAL SHEETS

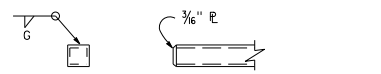
REGISTERED CIVIL ENGINEER  
Tillot Satter  
No. C42892  
PLANS APPROVAL DATE  
January 20, 2017  
EXP. 3-31-18  
CIVIL  
STATE OF CALIFORNIA

THE STATE OF CALIFORNIA OR ITS OFFICERS OR AGENTS SHALL NOT BE RESPONSIBLE FOR THE ACCURACY OR COMPLETENESS OF SCANNED COPIES OF THIS PLAN SHEET.

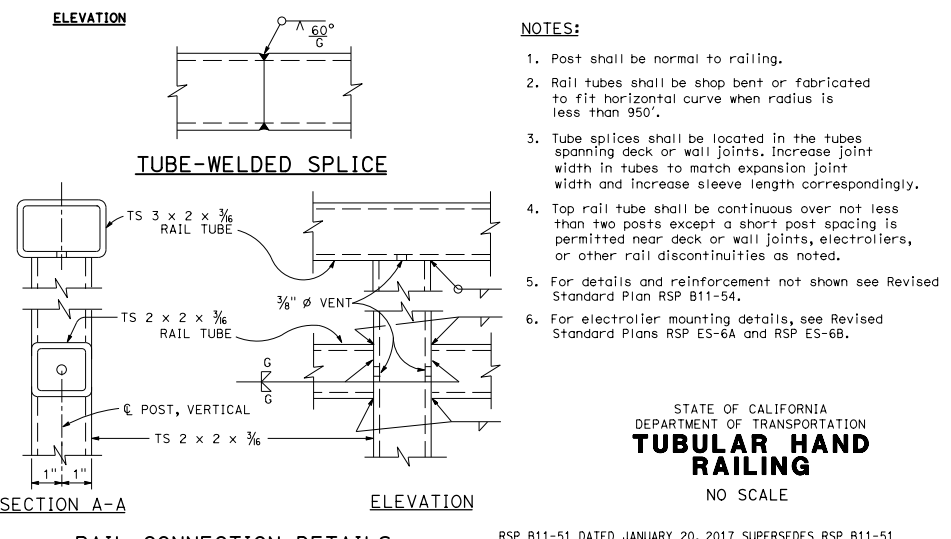
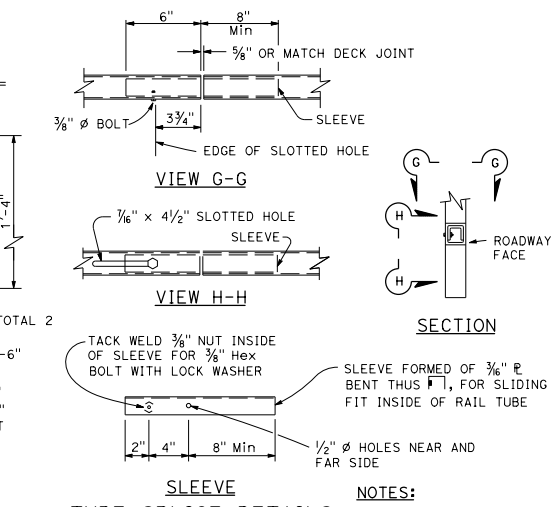
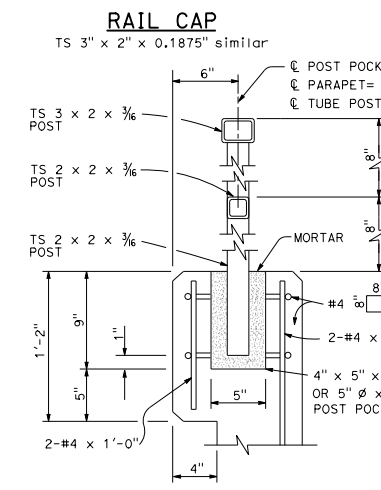


**TYPICAL SECTION**

**ELECTROLIER PEDESTAL DETAILS**



**END POST ELECTROLIER DECK OR WALL JOINT CHAIN LINK RAILING TYPE 7**



- NOTES:**
1. Post shall be normal to railing.
  2. Rail tubes shall be shop bent or fabricated to fit horizontal curve when radius is less than 950'.
  3. Tube splices shall be located in the tubes spanning deck or wall joints. Increase joint width in tubes to match expansion joint width and increase sleeve length correspondingly.
  4. Top rail tube shall be continuous over not less than two posts except a short post spacing is permitted near deck or wall joints, electroliers, or other rail discontinuities as noted.
  5. For details and reinforcement not shown see Revised Standard Plan RSP B11-54.
  6. For electrolier mounting details, see Revised Standard Plans RSP ES-6A and RSP ES-6B.

STATE OF CALIFORNIA  
DEPARTMENT OF TRANSPORTATION  
**TUBULAR HAND RAILING**  
NO SCALE

RSP B11-51 DATED JANUARY 20, 2017 SUPERSEDES RSP B11-51 DATED JULY 15, 2016 AND STANDARD PLAN B11-51 DATED MAY 20, 2011 - PAGE 294 OF THE STANDARD PLANS BOOK DATED 2010.

**REVISED STANDARD PLAN RSP B11-51**

2010 REVISED STANDARD PLAN RSP B11-51