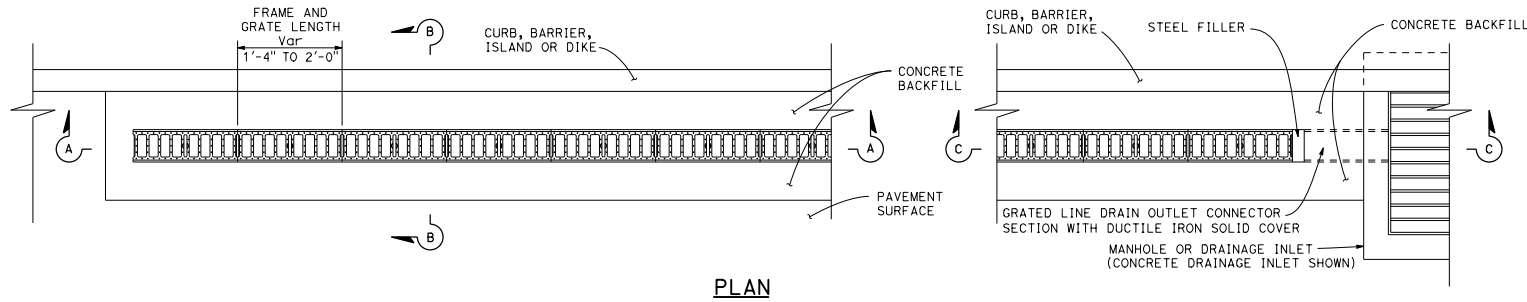


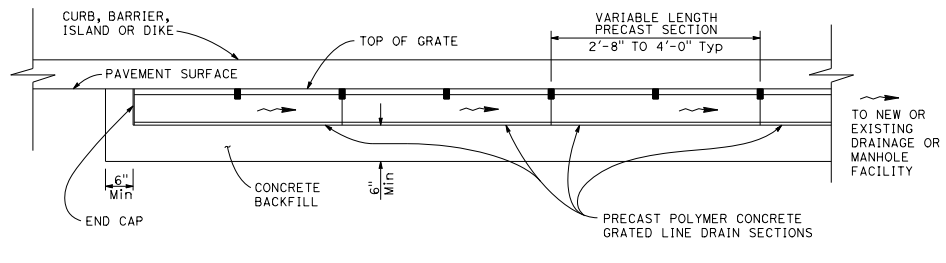
DIST	COUNTY	ROUTE	POST MILES TOTAL PROJECT	SHEET NO.	TOTAL SHEETS

*Raymond Don Isztou*  
 REGISTERED CIVIL ENGINEER  
 No. C37332  
 Exp. 6-30-18  
 CIVIL  
 STATE OF CALIFORNIA

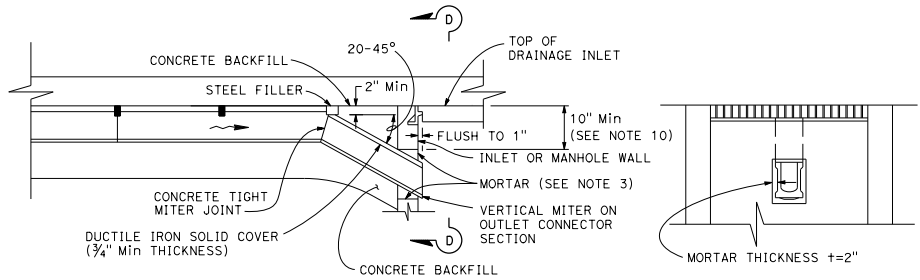
January 20, 2017  
 PLANS APPROVAL DATE  
 THE STATE OF CALIFORNIA OR ITS OFFICERS OR AGENTS SHALL NOT BE RESPONSIBLE FOR THE ACCURACY OR COMPLETENESS OF SCANNED COPIES OF THIS PLAN SHEET.



**PLAN**



**SECTION A-A**  
(See Note 1)

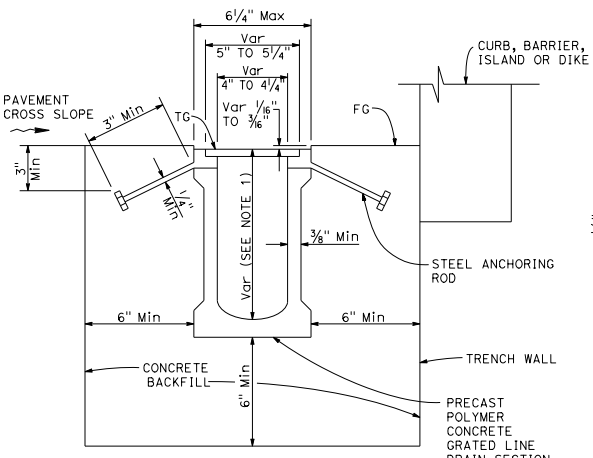


**SECTION C-C**

**SECTION D-D**

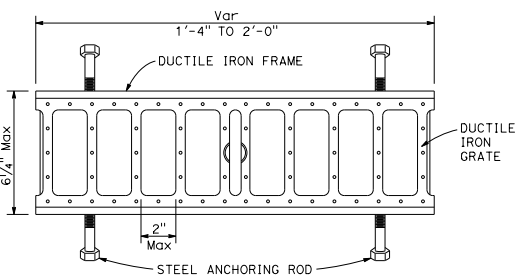
**NOTES:**

1. See Quantity Sheets for discharge capacity requirements.
2. Discharge capacity (cfs) at point A must be equivalent to maximum channel discharge capacity of grated line drain at point B.
3. Precast polymer concrete drain sections are available in non-sloped uniform depth sections 4 1/8" to 12" or in 0.6 percent pre-sloped sections with graduated depths from 4 1/8" to 12". See Project Plans for trench sections to be installed.
4. Nominal dimensions shown. Allowable tolerance ± 2%.
5. For GMP inlet connection, seal field joint with a pliable mixture of sand, portland cement and emulsified asphalt (mixture of 1 part portland cement, 3-5 parts sand and 1/2 part SSI emulsified asphalt).
6. Within designated pedestrian paths of travel, the maximum grate opening in the direction of pedestrian traffic must not exceed 1/2".
7. Grate patterns may vary from detail shown. See Special Provisions.
8. Steel anchoring rods not used when frame is integral with polymer concrete grated line drain section.
9. 3/8" maximum gap between adjacent gratings.
10. Contractor to field verify minimum depth to avoid conflict with inlet top.



**SECTION B-B**

(Precast grate line drain with non-integral frame)  
See Note 3



**FRAME AND GRATE DETAIL**

See Notes 4, 5, 6 and 7

STATE OF CALIFORNIA  
 DEPARTMENT OF TRANSPORTATION  
**GRADED LINE DRAIN  
 DETAILS No. 1 - POLYMER  
 CONCRETE, 4" NOMINAL WIDTH**

NO SCALE

RSP D98G DATED JANUARY 20, 2017 SUPPLEMENTS THE STANDARD PLANS BOOK DATED 2010.

**REVISED STANDARD PLAN RSP D98G**

2010 REVISED STANDARD PLAN RSP D98G