

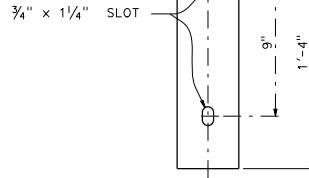
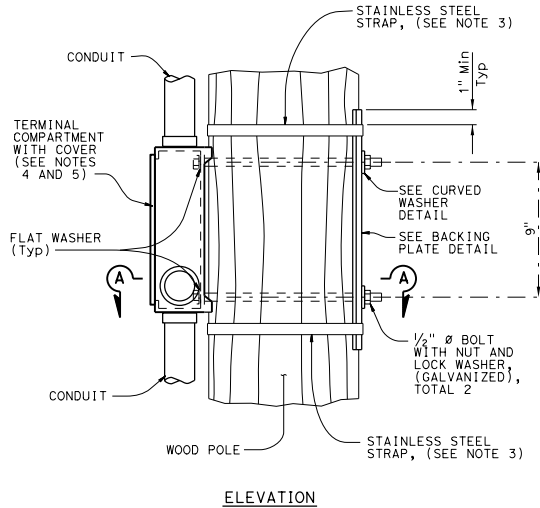


| DIST | COUNTY | ROUTE | POST MILES TOTAL PROJECT | SHEET NO. | TOTAL SHEETS |
|--|--------|-------|-----------------------------|-----------|--------------|
| | | | | | |
|  REGISTERED CIVIL ENGINEER | | | | | |
| January 20, 2017 PLANS APPROVAL DATE | | | | | |
|  | | | | | |
| <small>THE STATE OF CALIFORNIA OR ITS OFFICERS OR AGENTS SHALL NOT BE RESPONSIBLE FOR THE ACCURACY OR COMPLETENESS OF SCANNED COPIES OF THIS PLAN SHEET.</small> | | | | | |

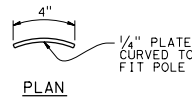
TO ACCOMPANY PLANS DATED _____

NOTES:

1. Verify pole dimensions at terminal compartment for fabrication of backing plate and curved washer.
2. Backing plate to be galvanized after fabrication.
3. $\frac{3}{4}$ " x 0.044" minimum, rounded edge stainless steel straps, double wrapped with 2" long bend under stainless steel strap buckle.
4. For miscellaneous details for signal mounting not shown see Standard Plan ES-4D.
5. If the terminal compartment has a cable entry guide on the rear face, remove the cable entry guide to a level that will not interfere with the wood post. Close any unused cable entry locations with raintight cap.

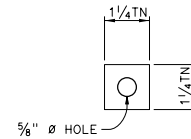


ELEVATION

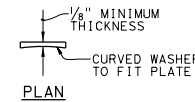


PLAN

BACKING PLATE
DETAIL

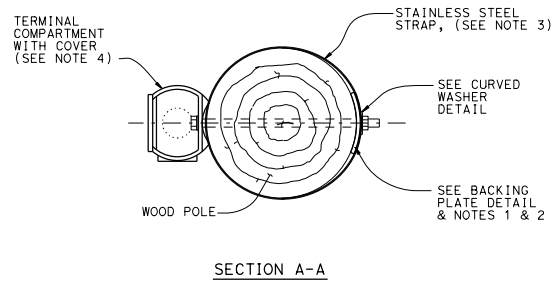


ELEVATION



PLAN

CURVED WASHER
DETAIL



SECTION A-A

SIDE MOUNTING
TERMINAL COMPARTMENT

STATE OF CALIFORNIA
DEPARTMENT OF TRANSPORTATION

**TEMPORARY WOOD POLES
DETAILS No. 4**

NO SCALE

RSP ES-19D DATED JANUARY 20, 2017 SUPPLEMENTS THE STANDARD PLANS BOOK DATED 2010.

REVISED STANDARD PLAN RSP ES-19D

2010 REVISED STANDARD PLAN RSP ES-19D