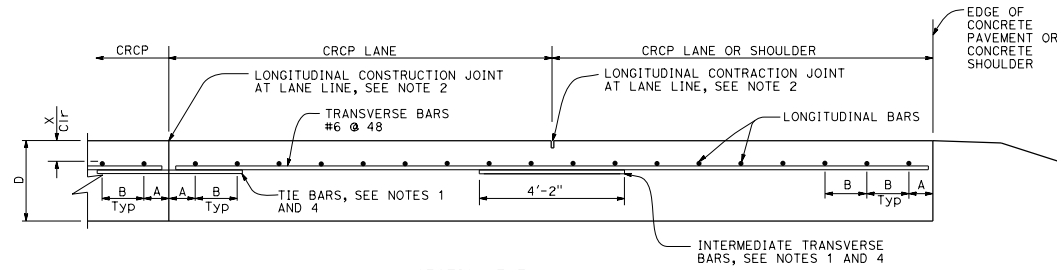


PLAN
See Note 3



SECTION Z-Z

| | | | | | |
|------|--------|-------|-----------------------------|--------------|-----------------|
| D16+ | COUNTY | ROUTE | POST MILES TOTAL PROJECT | SHEET NO. | TOTAL SHEETS |
| | | | | | |

Flora E. Bautista
 REGISTERED CIVIL ENGINEER
 No. 054859
 Exp. 6-30-18
 CIVIL
 STATE OF CALIFORNIA

January 20, 2017
 PLANS APPROVAL DATE
 THE STATE OF CALIFORNIA OR ITS OFFICERS
 OR AGENTS SHALL NOT BE RESPONSIBLE FOR
 THE ACCURACY OR COMPLETENESS OF SCANNED
 COPIES OF THIS PLAN SHEET.

TO ACCOMPANY PLANS DATED _____

TABLE No. 1 LONGITUDINAL BAR REINFORCEMENT

| SLAB THICKNESS AND BAR SIZE | | FIRST SPACING AT EDGE OR JOINT | REGULAR BARS | ADDITIONAL BARS AT TRANSVERSE CONSTRUCTION JOINT | Clr |
|-----------------------------|----------|--------------------------------|--------------|--|------|
| D | BAR SIZE | SPACING A | SPACING B | SPACING 2 x B | X |
| .75' | #6 | 3" TO 4" | 8.0" | 16" | 4" |
| .80' | #6 | 3" TO 4" | 7.5" | 15" | 4" |
| .85' | #6 | 3" TO 4" | 7.0" | 14" | 4" |
| .90' | #6 | 3" TO 4" | 6.5" | 13" | 4" |
| .95' | #6 | 3" TO 4" | 6.25" | 12.5" | 4" |
| 1.00' | #6 | 3" TO 4" | 6.0" | 12" | 5" |
| 1.05' | #6 | 3" TO 4" | 5.75" | 11.5" | 5" |
| 1.10' | #6 | 3" TO 4" | 5.5" | 11" | 5.5" |

NOTES:

1. Place transverse tie bars and intermediate transverse bars parallel to and in the same plane as transverse bars.
2. For longitudinal contraction and construction joint details, see Revised Standard Plan RSP P16.
3. For curved lane layout see Revised Standard Plan RSP P16.
4. For tie bar and intermediate transverse bar details see Revised Standard Plan RSP P16.

STATE OF CALIFORNIA
 DEPARTMENT OF TRANSPORTATION
**CONTINUOUSLY REINFORCED
 CONCRETE PAVEMENT**

NO SCALE
 RSP P4 DATED JANUARY 20, 2017 SUPERSEDES RSP P4 DATED JULY 19, 2013
 AND RSP P4 DATED APRIL 20, 2012 AND STANDARD PLAN P4 DATED
 MAY 20, 2011 - PAGE 128 OF THE STANDARD PLANS BOOK DATED 2010.

REVISED STANDARD PLAN RSP P4

2010 REVISED STANDARD PLAN RSP P4