

DIST	COUNTY	ROUTE	POST MILES TOTAL PROJECT	SHEET NO.	TOTAL SHEETS

Flornie E. Baultista
 REGISTERED CIVIL ENGINEER
 No. C54859
 Exp. 6-30-18
 CIVIL
 STATE OF CALIFORNIA

January 20, 2017
 PLANS APPROVAL DATE
 THE STATE OF CALIFORNIA OR ITS OFFICERS OR AGENTS SHALL NOT BE RESPONSIBLE FOR THE ACCURACY OR COMPLETENESS OF SCANNED COPIES OF THIS PLAN SHEET.

TO ACCOMPANY PLANS DATED _____

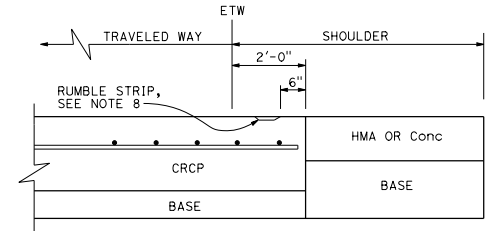
NOTES:

1. For longitudinal bar size, spacing and clearances, see Revised Standard Plan RSP P4.
2. For tie bar and intermediate transverse bar details, see Revised Standard Plan RSP P16.
3. Place intermediate transverse bars parallel to and in the same plane as transverse bars.
4. Construct transverse joints at right angle to the longitudinal joints in adjacent CRCP. Space joints at no less than 10' intervals and no more than 14' intervals. Match location of JPCP transverse joint with CRCP transverse construction joint, expansion joint or wide flange beam. Omit dowel bars.
5. For longitudinal contraction joint details, see Revised Standard Plan RSP P16.
6. For additional longitudinal bars detail, see Detail A on Revised Standard Plan RSP P14.
7. For longitudinal construction joint plan layout not shown, see Revised Standard Plan RSP P4. For tie bar details at longitudinal construction joint, see Revised Standard Plan RSP P16.
8. For limits of rumble strips, see Project Plans.

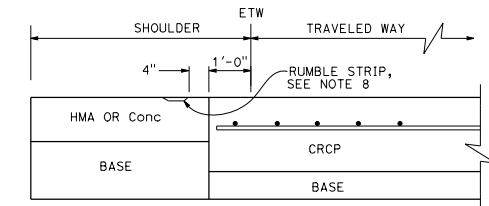
ABBREVIATION:

D = Thickness of CRCP

DETAIL A



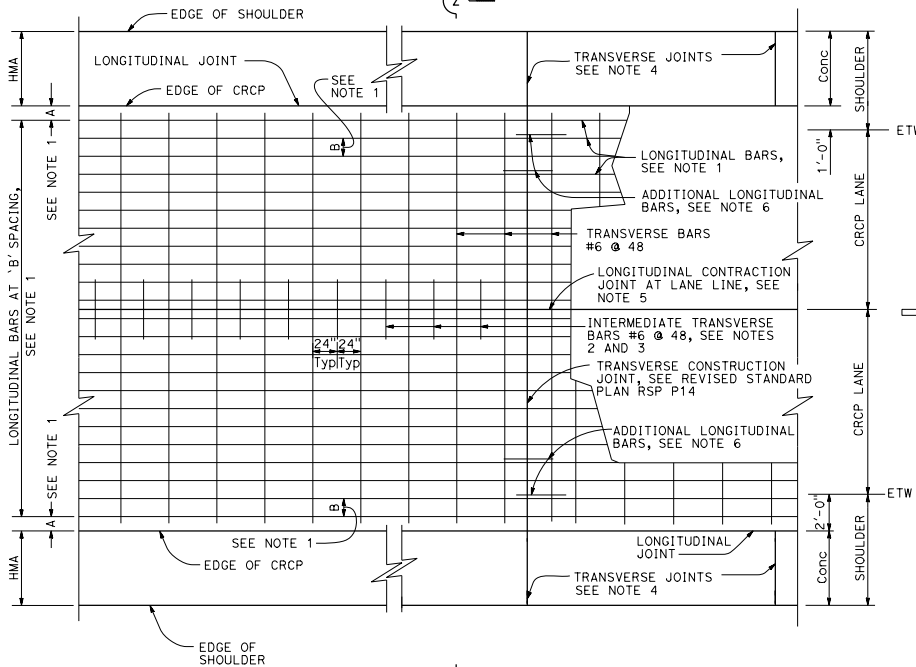
DETAIL B



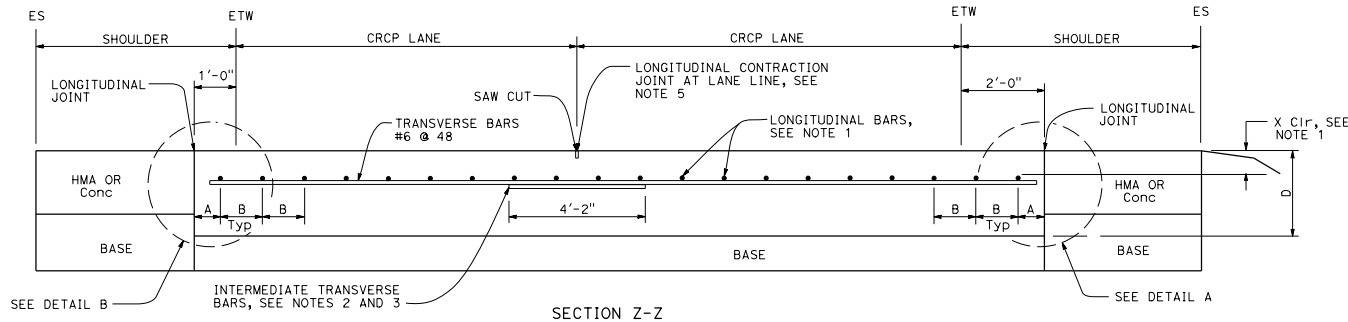
STATE OF CALIFORNIA
DEPARTMENT OF TRANSPORTATION
**CONTINUOUSLY REINFORCED
CONCRETE PAVEMENT
(WIDENED LANE)**
NO SCALE

RSP P5A DATED JANUARY 20, 2017 SUPERSEDES RSP P5A DATED JULY 19, 2013 THAT SUPPLEMENTS THE STANDARD PLANS BOOK DATED 2010.

REVISED STANDARD PLAN RSP P5A



PLAN
See Note 7



SECTION Z-Z

2010 REVISED STANDARD PLAN RSP P5A