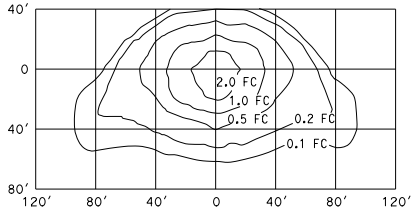


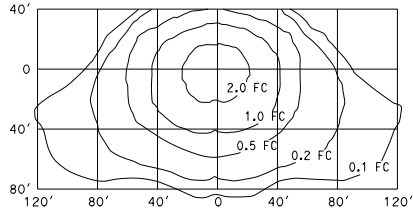
ISOFOOTCANDLE CURVE - MINIMUM



**TYPE III MEDIUM CUTOFF**

Cutoff Luminaire  
34' Mounting Height  
Lamp operated at 22,000 lm  
200-W high pressure sodium lamp  
ANSI Designation S66

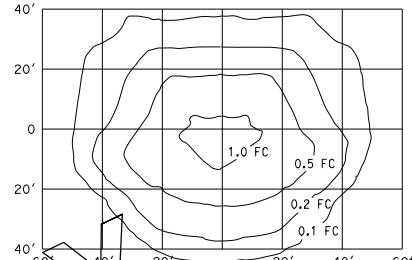
ISOFOOTCANDLE CURVE - MINIMUM



**TYPE III MEDIUM CUTOFF**

Cutoff Luminaire  
40' Mounting Height  
Lamp operated at 37,000 lm  
310-W high pressure sodium lamp  
ANSI Designation S67

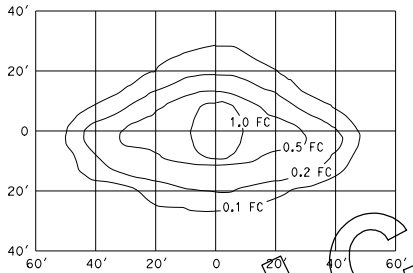
ISOFOOTCANDLE CURVE - MINIMUM



**FLUSH SOFFIT LUMINAIRE**

17' Mounting Height  
Lamp operated at 5,800 lm  
70-W high pressure sodium lamp  
ANSI Designation S62

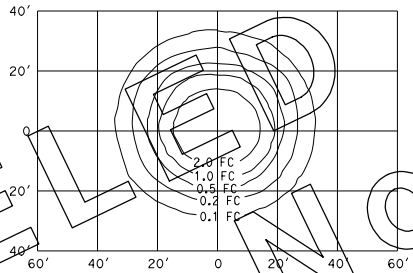
ISOFOOTCANDLE CURVE - MINIMUM



**PENDANT SOFFIT LUMINAIRE**

TYPE III SHORT  
17' Mounting Height  
Lamp operated at 5,800 lm  
70-W high pressure sodium lamp  
ANSI Designation S62

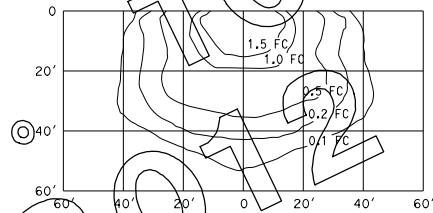
ISOFOOTCANDLE CURVE - MINIMUM



**PENDANT SOFFIT LUMINAIRE**

17' Mounting Height  
Lamp operated at 5,800 lm  
70-W high pressure sodium lamp  
ANSI Designation S62

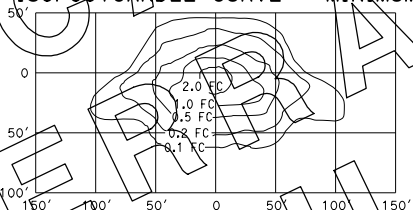
ISOFOOTCANDLE CURVE - MINIMUM



**WALL LUMINAIRE**

15' Mounting Height  
Lamp operated at 9,500 lm  
100-W high pressure sodium lamp  
ANSI Designation S54

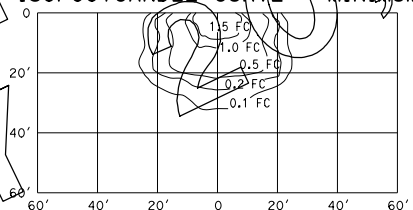
ISOFOOTCANDLE CURVE - MINIMUM



**TYPE III MEDIUM CUTOFF**

Cutoff Luminaire  
30' Mounting Height  
Lamp operated at 16,000 lm  
150-W high pressure sodium lamp  
ANSI Designation S55

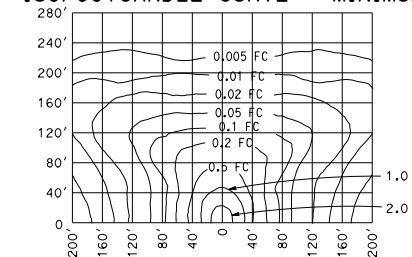
ISOFOOTCANDLE CURVE - MINIMUM



**WALL LUMINAIRE**

15' Mounting Height  
Lamp operated at 5,800 lm  
70-W high pressure sodium lamp  
ANSI Designation S62

ISOFOOTCANDLE CURVE - MINIMUM



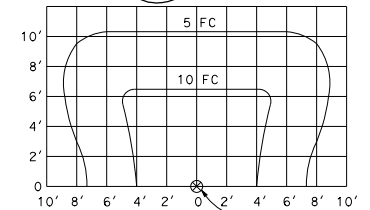
**LOW PRESSURE SODIUM LUMINAIRE**

40' Mounting Height  
Lamp operated at 33,000 lm  
180-W low pressure sodium lamp

DIST	COUNTY	ROUTE	POST MILES TOTAL PROJECT	SHEET NO.	TOTAL SHEETS

*Jeffrey G. McRae*  
 REGISTERED ELECTRICAL ENGINEER  
 No. E14512  
 Exp. 6-30-12  
 PROFESSIONAL ENGINEER  
 STATE OF CALIFORNIA

May 20, 2011  
 PLANS APPROVAL DATE  
 THE STATE OF CALIFORNIA OR ITS OFFICERS OR AGENTS SHALL NOT BE RESPONSIBLE FOR THE ACCURACY OR COMPLETENESS OF SCANNED COPIES OF THIS PLAN SHEET.



**SIGN LIGHTING FIXTURE  
ISOFOOTCANDLE DIAGRAM**

**NOTES:**

1. Curves represent the minimum footcandle (FC) of initial illumination on a 10'-0" x 20'-0" panel.
2. The FC shown are with the fixture attached to the light fixture mounting channel which places the center of the source 4'-8" in front of panel and 1'-0" below the bottom edge.
3. Applicable lamp: 85-W fluorescent phosphor coated induction lamp.

STATE OF CALIFORNIA  
DEPARTMENT OF TRANSPORTATION

**ELECTRICAL SYSTEMS  
(ISOFOOTCANDLE DIAGRAMS)**

NO SCALE