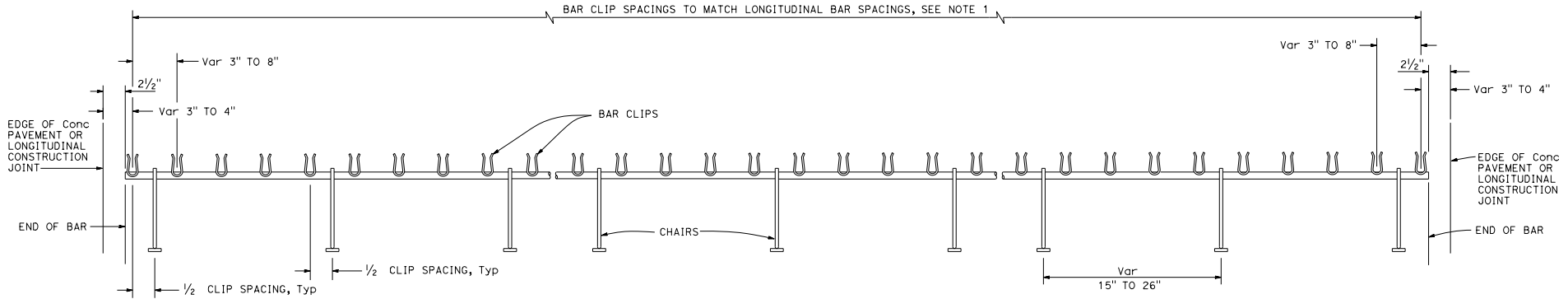


DIST	COUNTY	ROUTE	POST MILES TOTAL PROJECT	SHEET NO.	TOTAL SHEETS

William K. Farbach
 REGISTERED CIVIL ENGINEER
 October 19, 2012
 PLANS APPROVAL DATE
 No. C49042
 Exp. 9-30-14
 CIVIL
 STATE OF CALIFORNIA

THE STATE OF CALIFORNIA OR ITS OFFICERS OR AGENTS SHALL NOT BE RESPONSIBLE FOR THE ACCURACY OR COMPLETENESS OF SCANNED COPIES OF THIS PLAN SHEET.

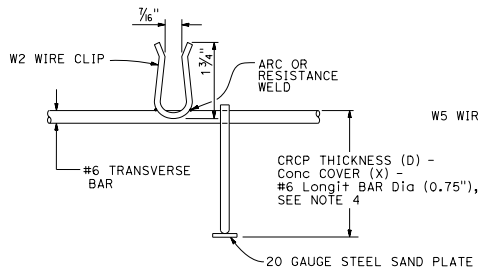
TO ACCOMPANY PLANS DATED _____



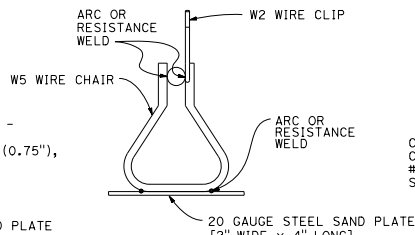
TRANSVERSE BAR ASSEMBLY

NOTES:

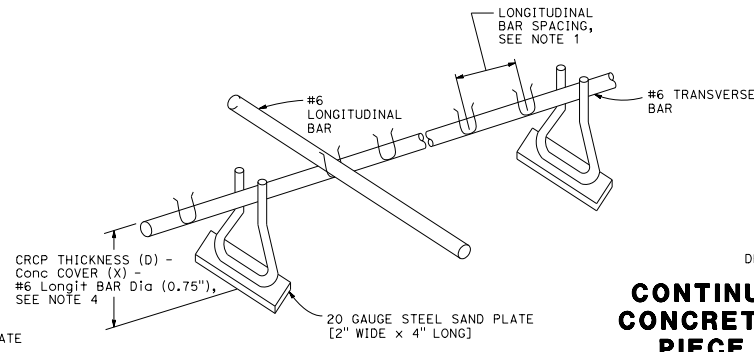
1. See Revised Standard Plan RSP P4 for spacing of longitudinal bars.
2. Tensile strength of chair shall be at least 50,000 psi.
3. Wire sizes shown are minimum required.
4. For concrete cover (X), see Table 1 in Revised Standard Plan RSP P4.



#6 BAR CLIP DETAIL



CHAIR DETAIL



ISOMETRIC VIEW OF CHAIR ASSEMBLY

STATE OF CALIFORNIA
 DEPARTMENT OF TRANSPORTATION
**CONTINUOUSLY REINFORCED
 CONCRETE PAVEMENT-SINGLE
 PIECE TRANSVERSE BAR
 ASSEMBLY**

NO SCALE

RSP P13 DATED OCTOBER 19, 2012 SUPERSEDES STANDARD PLAN P13
DATED MAY 20, 2011 - PAGE 133 OF THE STANDARD PLANS BOOK DATED 2010.

REVISED STANDARD PLAN RSP P13

2010 REVISED STANDARD PLAN RSP P13