

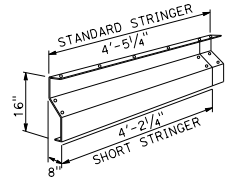
DIST	COUNTY	ROUTE	POST MILES TOTAL PROJECT	SHEET NO.	TOTAL SHEETS

Kathryn Orlewel
REGISTERED/CIVIL ENGINEER

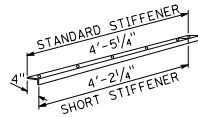
May 20, 2011
PLANS APPROVAL DATE

THE STATE OF CALIFORNIA OR ITS OFFICERS OR AGENTS SHALL NOT BE RESPONSIBLE FOR THE ACCURACY OR COMPLETENESS OF SCANNED COPIES OF THIS PLAN SHEET.

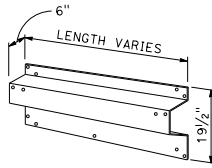
REGISTERED PROFESSIONAL ENGINEER
Kathryn Orlewel
No. C55599
Exp. 12-31-12
CIVIL
STATE OF CALIFORNIA



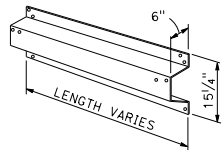
STRINGER-0.109"



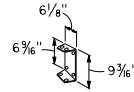
STRINGER STIFFENER-0.168"



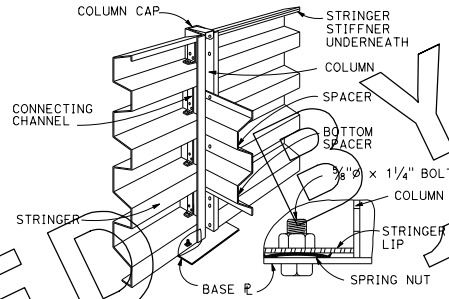
SPACER-0.109"



BOTTOM SPACER-0.109"

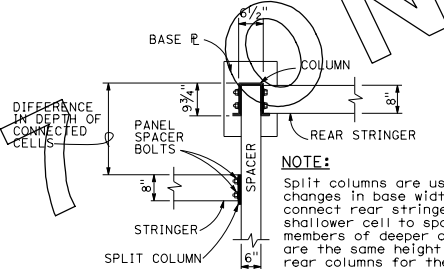


CONNECTING CHANNEL-0.168"



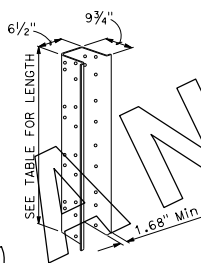
CRIB ASSEMBLY FRONT COLUMN
Rear Column Similar

NOTE:
Before setting base plate, insert bolt and fasten with spring nut.

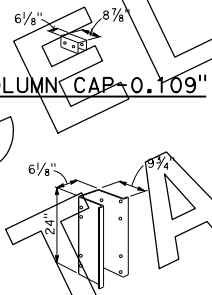


NOTE:
Split columns are used at changes in base width to connect rear stringers of shallower cell to spacer members of deeper cell. They are the same height as the rear columns for the shallower cell.

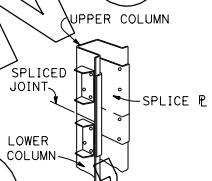
DETAIL SPLIT COLUMN ATTACHMENT



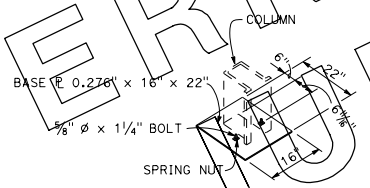
COLUMN-0.168"



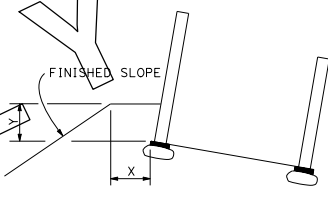
COLUMN SPLICE PLATE-0.138"



ASSEMBLY AT COLUMN SPLICE

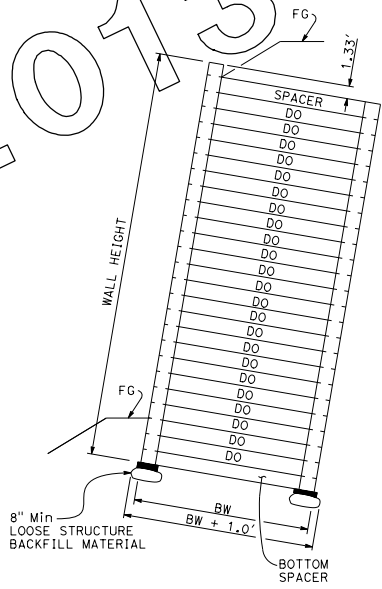


BASE PLATE ARRANGEMENT



EMBEDMENT DETAIL

EMBEDMENT DATA		
WALL TYPE	X	Y
A	2'-6"	2'-6"
B	3'-0"	3'-0"
C	3'-6"	3'-0"
D	4'-0"	3'-0"
E	4'-6"	3'-0"



WALL SECTION

NOTE:
All bolts 5/8" ϕ and 1 1/4" long, minimum

LEGEND
DO = DITTO
BW = BASE WIDTH

STATE OF CALIFORNIA
DEPARTMENT OF TRANSPORTATION
STEEL CRIB WALL CONSTRUCTION DETAILS

NO SCALE

C8A

151

2010 STANDARD PLAN C8A