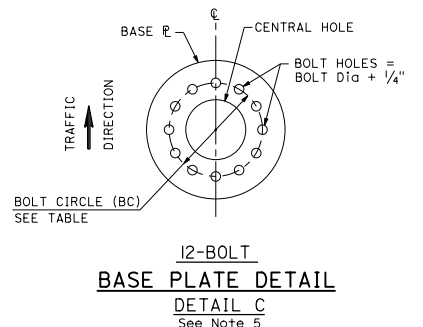
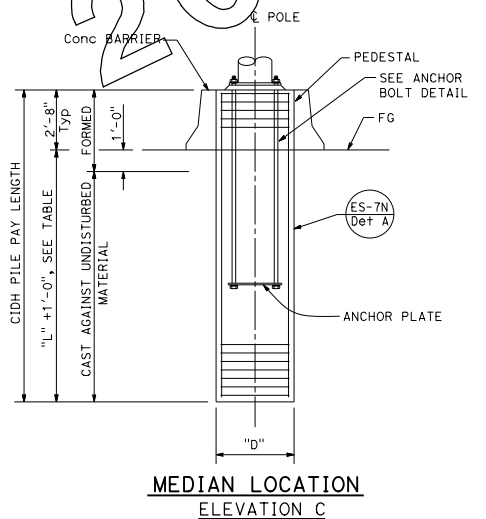
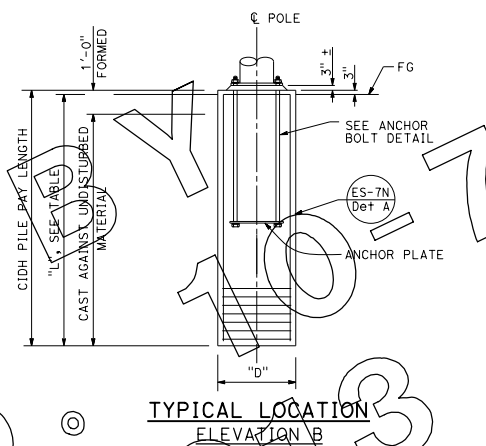
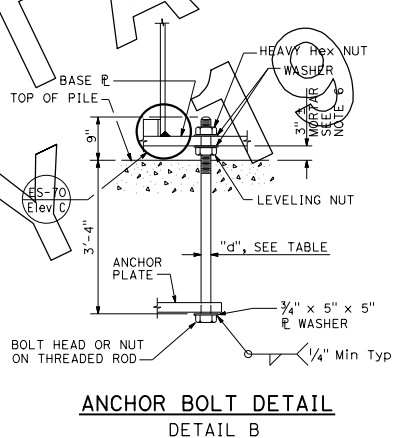
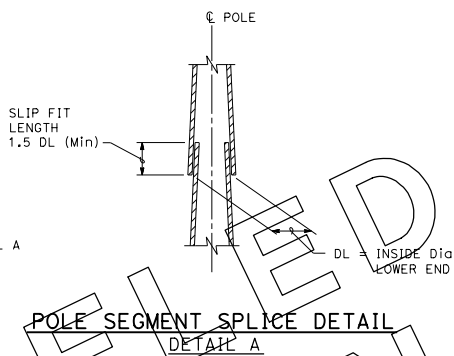
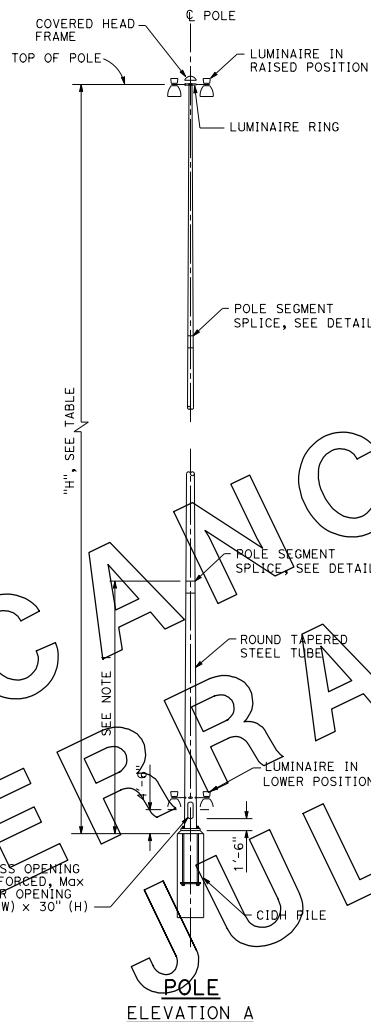


POLE TYPE	POLE DATA			BASE PLATE DATA				CIDH PILE DATA		
	HEIGHT "H"	Min OD BASE	Min THICKNESS BASE *	Dia	THICKNESS	ANCHOR BOLT SIZE		BC = BOLT CIRCLE	"D"	"L"
						TOTAL	"d"			
HM 80	80'-0"	1'-6"	0.3125"	2'-4"	3"	12	1 1/2"	1'-11"	3'-6"	12'-0"
HM 100	100'-0"	1'-8"		2'-6"			1 1/2"	2'-1"	4'-0"	13'-0"
HM 120	120'-0"	1'-10"	0.375"	3'-2"			1 3/4"	2'-8"	5'-0"	14'-0"
HM 160	160'-0"	2'-2 1/2"	0.5"	3'-6"			3'-0"	6'-0"	15'-0"	

* WHEN USING ALTERNATIVE BASE, SEE ES-70, DETAIL C4 FOR BASE THICKNESS ADJUSTMENT.



STATE OF CALIFORNIA
DEPARTMENT OF TRANSPORTATION
**ELECTRICAL SYSTEMS
(LIGHTING STANDARD,
80' TO 160' HIGH MAST
LIGHT POLE)**
NO SCALE

D16+	COUNTY	ROUTE	POST MILES TOTAL PROJECT	SHEET No.	TOTAL SHEETS

Stanley P. Johnson
REGISTERED CIVIL ENGINEER

May 20, 2011
PLANS APPROVAL DATE

Stanley P. Johnson
No. C5735
Exp. 3-31-12
CIVIL
STATE OF CALIFORNIA

THE STATE OF CALIFORNIA OR ITS OFFICERS OR AGENTS SHALL NOT BE RESPONSIBLE FOR THE ACCURACY OR COMPLETENESS OF SCANNED COPIES OF THIS PLAN SHEET.

- NOTES:**
1. Pole details shall suit the lowering device and this foundation plan. Pole details shall be submitted to the Engineer for approval.
 2. For number of luminaires to be mounted on the pole, see Electrical Plans.
 3. Foundation design is based on a maximum of 10 luminaires. Design wind velocity 80 mph (fastest mile).
 4. Slip fit length shall not be less than 1.5 DL.
 5. Base plate shape optional.
 6. For central void and drain holes in mortar, see ES-6B, Detail N.
 7. Access opening shall be located on the downstream side of traffic unless otherwise determined by the Engineer.