
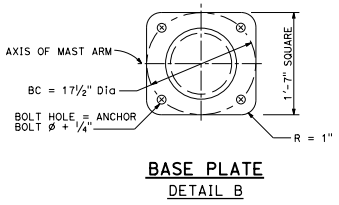
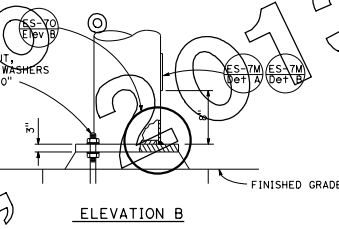
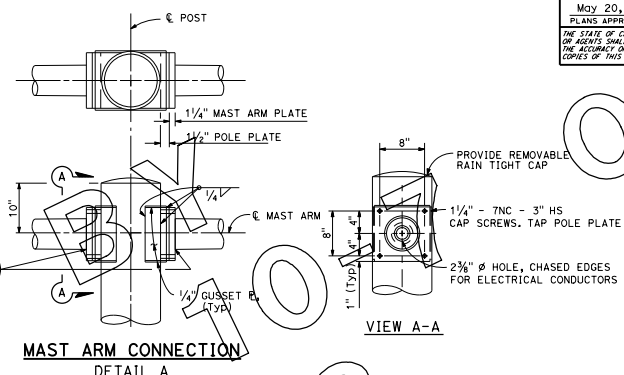
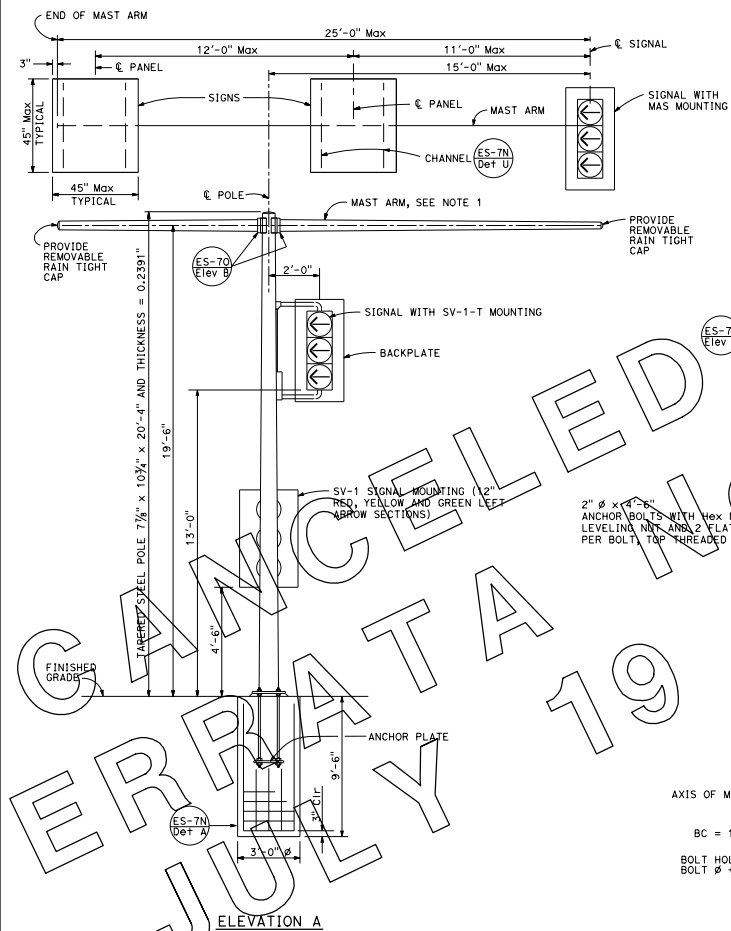


DIST	COUNTY	ROUTE	POST MILES TOTAL PROJECT	SHEET TOTAL SHEETS

	
May 20, 2011 PLANS APPROVAL DATE	
THE STATE OF CALIFORNIA OR ITS OFFICERS OR AGENTS SHALL NOT BE RESPONSIBLE FOR THE ACCURACY OR COMPLETENESS OF SCANNED COPIES OF THIS PLAN SHEET.	



- NOTES:**
1. Round tapered steel tube thickness 0.1793" with maximum taper of 0.143-inch per foot and 7/8" OD minimum at pole.
 2. Cap screws shall be tightened by the turn-of-nut method, 1/3 turn from snug tight condition. No washer will be required.
 3. For mast arm lengths, signs or signals required on each side of pole, see project plans.
 4. Signal mounted on mast arm shall be MAS mounted on pipe tenon, see Detail S on Standard Plan ES-7M.
 5. Sign area shall not exceed 14.0 square feet for each sign.
 6. If 2 signs are placed on one side of pole, one sign must be placed adjacent to pole.

STATE OF CALIFORNIA
DEPARTMENT OF TRANSPORTATION
**ELECTRICAL SYSTEMS
(SIGNAL AND SIGN STANDARD,
TYPE 33 LEFT TURN)**
NO SCALE