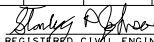



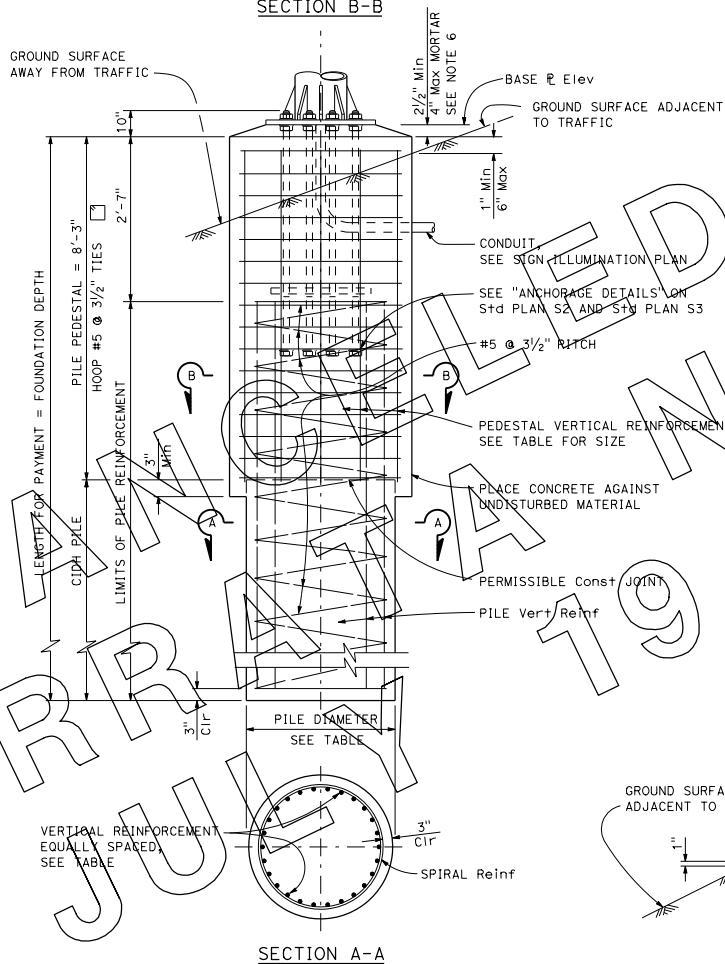
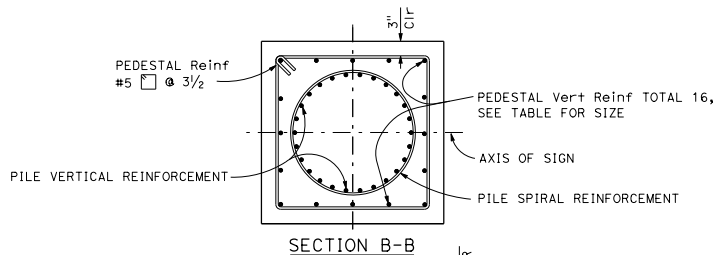
D16+	COUNTY	ROUTE	POST MILES TOTAL PROJECT	SHEET TOTAL SHEETS

  
 REGISTERED CIVIL ENGINEER

May 20, 2011  
 PLANS APPROVAL DATE



THE STATE OF CALIFORNIA OR ITS OFFICERS OR AGENTS SHALL NOT BE RESPONSIBLE FOR THE ACCURACY OR COMPLETENESS OF SCANNED COPIES OF THIS PLAN SHEET.

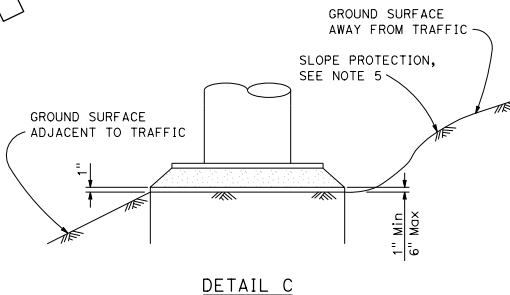


POST TYPE No.	ANCHOR BOLTS			SQUARE PILE PEDESTAL				CIDH PILE			FOUNDATION DEPTH * *
	BOLT CIRCLE	BOLT TOTAL AND Dia	TOTAL LENGTH	PEDESTAL SQUARE ONE SIDE	VERTICAL REINFORCING TOTAL	# OF BARS EACH FACE	HOOP BAR SIZE SPACING	PILE Dia	VERTICAL REINFORCING TOTAL	SPIRAL BAR SIZE PITCH	
II	2'-0"	12-2"	4'-2"	5'-3"	16	#10	#5 3/2"	4'-6"	26	#10 #5 3/2"	14'-9"
III	2'-0"	12-2"									16'-0"
IX	2'-0"	12-2"									18'-0"
V	2'-10"	14-2"									19'-0"
VI		16-2 1/2"	5'-0"	5'-9"	#11			5'-0"	28	#11	22'-0"
VII											23'-0"
VIII											25'-0"
IX											25'-0"

\* \* Use Foundation Depth shown in table unless otherwise shown on the Project Plans.

**NOTES:**

1. For anchor bolt layout, see Standard Plan S3.
2. For "Base E elevation" see Project Plans.
3. Prior to erection of the post, backfill which is equivalent to the surrounding material shall be in place.
4. Pedestal shall be formed 6" minimum below ground surface. Remainder to be placed against undisturbed material.
5. Slope protection required when indicated on the Project Plans.
6. For drain holes and central void in mortar, see Standard Plan ES-68 Detail N.



STATE OF CALIFORNIA  
DEPARTMENT OF TRANSPORTATION  
**OVERHEAD SIGNS-TRUSS  
SINGLE POST TYPE  
SQUARE PEDESTAL PILE FOUNDATION**

NO SCALE

**S7**

2010 STANDARD PLAN S7

340