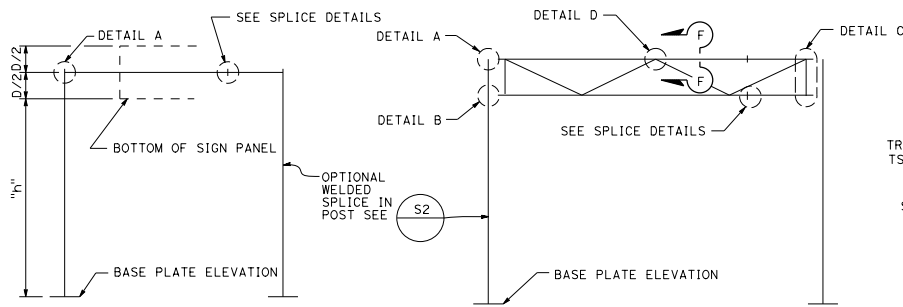


DIST	COUNTY	ROUTE	POST MILES TOTAL PROJECT	SHEET No.	TOTAL SHEETS

Stanley P. Johnson
 REGISTERED CIVIL ENGINEER
 No. 05735
 Exp. 3-31-12
 CIVIL
 STATE OF CALIFORNIA

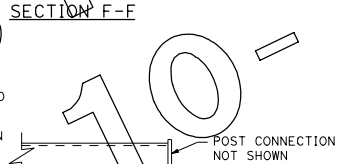
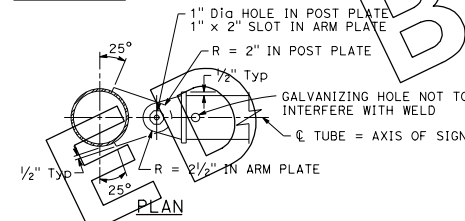
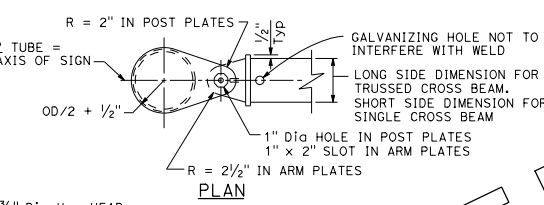
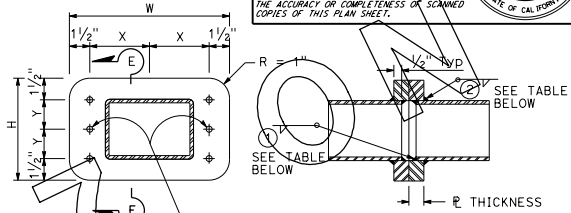
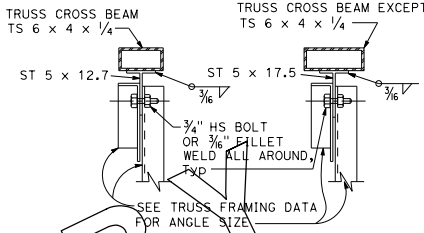
May 20, 2011
 PLANS APPROVAL DATE

THE STATE OF CALIFORNIA OR ITS OFFICERS OR AGENTS SHALL NOT BE RESPONSIBLE FOR THE ACCURACY OR COMPLETENESS OF SCANNED COPIES OF THIS PLAN SHEET.

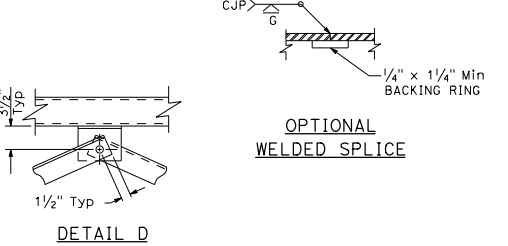
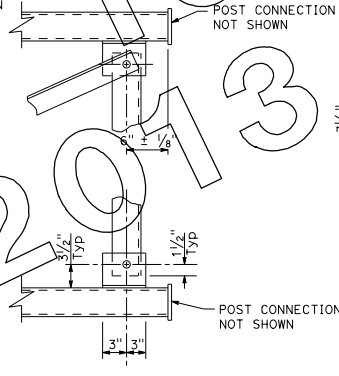
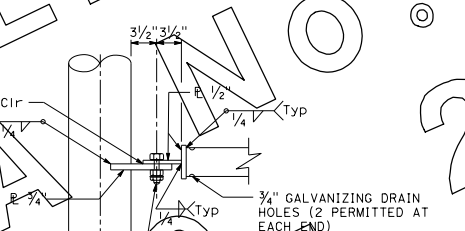
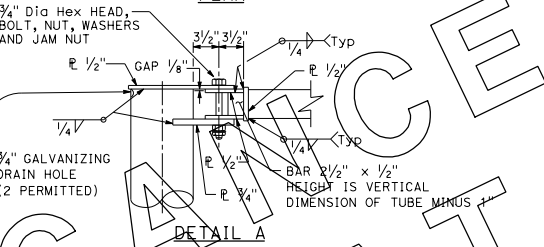


**SINGLE CROSS BEAM SERIES
TYPE A-1**

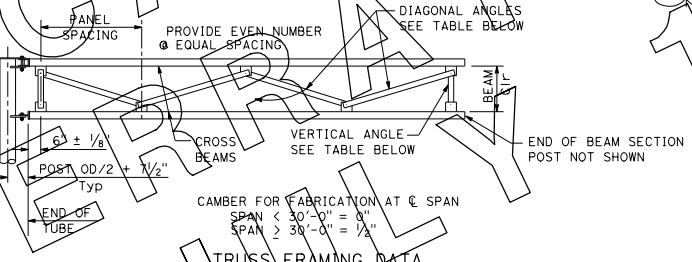
**TRUSS CROSS BEAM SERIES
TYPE A-2**



**END VIEW
SECTION E-E
SPLICE DETAILS**



- NOTES:**
- For post connection to base R see (S48).
 - For cross beam to sign panel connections see (S46).
 - SEE PROJECT PLANS FOR:
 1. Sign type and location.
 2. Panel type and location on structure.
 3. Post size and dimension "h".
 4. Cross beam size.
 5. Foundation type.
 6. Illumination if required.



SIGN DEPTH	BEAM CLEARANCE	MAXIMUM PANEL SPACING	VERTICAL ANGLE	DIAGONAL ANGLE
40" TO 70"	2'-0"	5'-6"	L3/2 x 2/2 x 1/4 *	L3/2 x 2/2 x 1/4 *
80" TO 100"	4'-6"	6'-6"	L3/2 x 2/2 x 1/4 *	L3/2 x 2/2 x 1/4 *

TUBULAR CROSS BEAM SIZE	HIGH STRENGTH BOLTS		A-36 PLATES		WELDING				
	No.	SIZE	X	Y	W	H	THICKNESS	(1)	(2)
TS 6 x 4 x 1/4	4	4 1/4"	2"	11 1/2"	7"	1"	1"	3/8"	5/8"
TS 8 x 4 x 1/4	6	5 1/4"	2 1/2"	13 1/2"	8"	1 1/8"	1 1/8"	3/8"	5/8"
TS 8 x 6 x 1/4		4 1/4"	3 1/2"	11 1/2"	10"	1 1/8"	1 1/8"	1/4"	5/8"
TS 8 x 6 x 3/8 **		6 1/2"	2 1/2"	16"	8"	1 3/8"	1 3/8"	3/8"	3/8"
TS 10 x 6 x 1/4		6 1/2"	3"	16"	9"	1 3/8"	1 3/8"	3/8"	1/2"

** LONG DIMENSION VERTICAL FOR SINGLE CROSS BEAM

STATE OF CALIFORNIA
DEPARTMENT OF TRANSPORTATION
**OVERHEAD SIGNS-LIGHTWEIGHT
TYPE A
CONNECTION DETAILS**

NO SCALE

2010 STANDARD PLAN S43

367