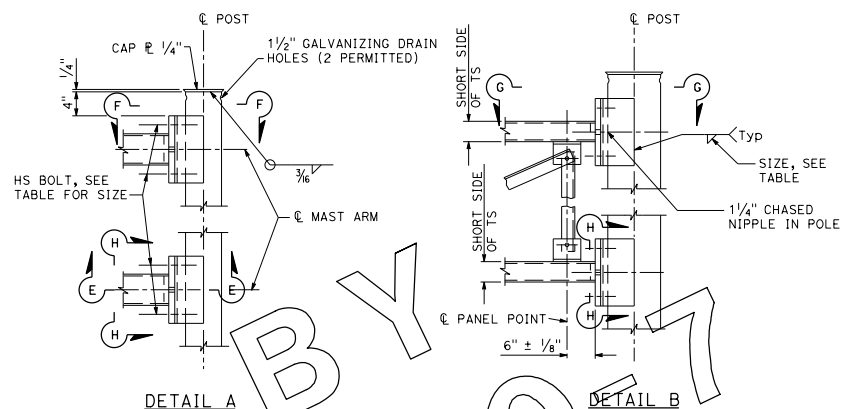
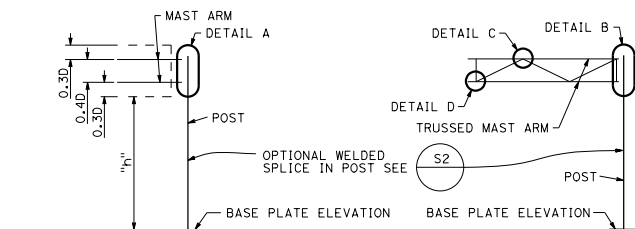


DIST	COUNTY	ROUTE	POST MILES TOTAL PROJECT	SHEET TOTAL SHEETS

Stanley P. Johnson  
 REGISTERED CIVIL ENGINEER  
 No. C67935  
 Exp. 3-31-12  
 CIVIL  
 STATE OF CALIFORNIA

May 20, 2011  
 PLANS APPROVAL DATE

THE STATE OF CALIFORNIA OR ITS OFFICERS OR AGENTS SHALL NOT BE RESPONSIBLE FOR THE ACCURACY OR COMPLETENESS OF SCANNED COPIES OF THIS PLAN SHEET.

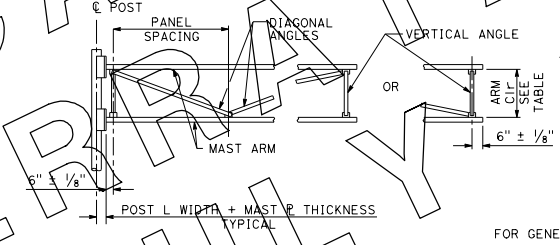
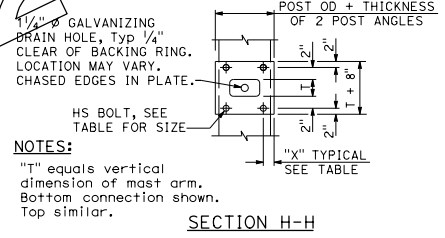
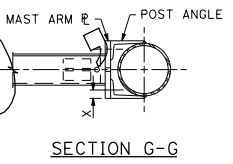
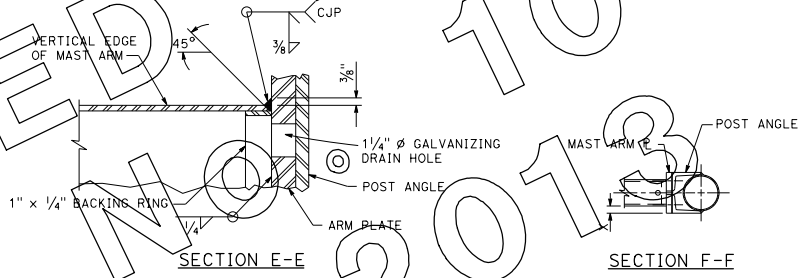
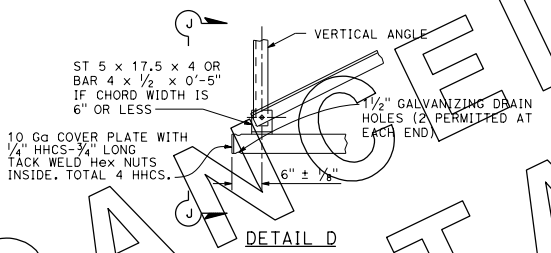
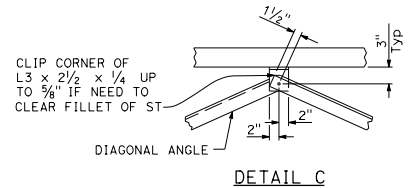


POST ANGLES

NPS	ANGLE	X	WELD
6	L5 x 3 x 1/2	1 3/4"	1/4"
8	L6 x 4 x 5/8	2 1/4"	1/4"
10	L7 x 4 x 5/8		1/4"
12	L8 x 4 x 3/4		5/8"
14	L8 x 4 x 3/4		5/8"

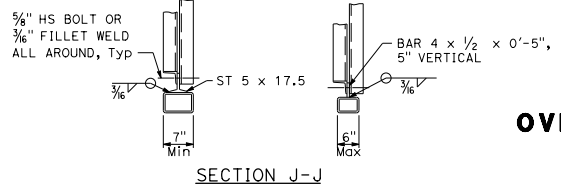
POST TO ARM FRAMING DATA

MAST ARM PLATE			
TWO ARMS	TRUSSED ARMS	PLATE	HS BOLT
TS 3 x 3 x 1/4		3/4"	1/2"
TS 4 x 4 x 1/4		1"	5/8"
TS 5 x 5 x 1/4		1"	3/4"
TS 6 x 6 x 1/4		1"	3/4"
TS 7 x 7 x 1/4	TS 5 x 3 x 3/8	1 1/4"	3/4"
	TS 6 x 4 x 3/8		7/8"
	TS 7 x 5 x 3/8		7/8"
	TS 8 x 6 x 3/8		7/8"
	TS 10 x 6 x 3/8		1"



SIGN DEPTH	ARM CLEARANCE	Max PANEL SPACING	VERTICAL ANGLE	DIAGONAL ANGLE
D=40" TO 70"	2'-0"	4'-4"	L2 x 2 x 1/4	L2 x 2 x 1/4
D=80" TO 100"	3'-0"	6'-6"	L3 1/2 x 2 1/2 x 1/4*	L3 1/2 x 2 1/2 x 1/4*

\* SHORT LEG OUTSTANDING



**NOTES:**  
 For post connection to base R see (S48).  
 For mast arm length and mast-arm-to sign panel connections see (S46).  
 SEE PROJECT PLANS FOR:  
 1. Sign type and location.  
 2. Panel type and location on structure.  
 3. Post size and dimension "h".  
 4. Mast arm size.  
 5. Foundation type.  
 6. Illumination if required.

STATE OF CALIFORNIA  
 DEPARTMENT OF TRANSPORTATION  
**OVERHEAD SIGNS-LIGHTWEIGHT TYPE C CONNECTIONS DETAILS**  
 NO SCALE

2010 STANDARD PLAN S45

369