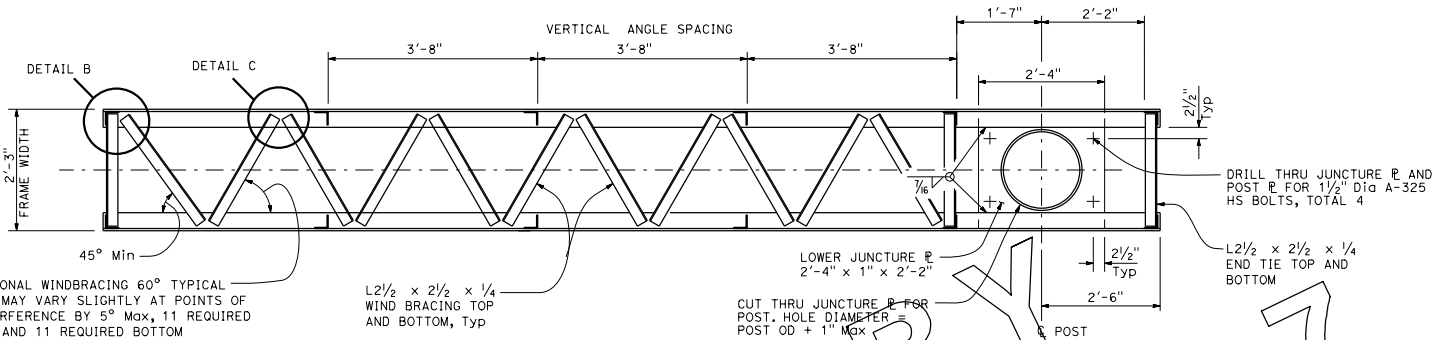


DIST	COUNTY	ROUTE	POST MILES TOTAL PROJECT	SHEET No.	TOTAL SHEETS

*Stanley P. Johnson*  
 REGISTERED CIVIL ENGINEER  
 May 20, 2011  
 PLANS APPROVAL DATE  
 STANLEY P. JOHNSON PROFESSIONAL ENGINEER  
 No. C67395  
 Exp. 3-31-12  
 CIVIL  
 STATE OF CALIFORNIA

THE STATE OF CALIFORNIA OR ITS OFFICERS OR AGENTS SHALL NOT BE RESPONSIBLE FOR THE ACCURACY OR COMPLETENESS OF SCANNED COPIES OF THIS PLAN SHEET.

ON



DIAGONAL WINDBRACING 60° TYPICAL AND MAY VARY SLIGHTLY AT POINTS OF INTERFERENCE BY 5° Max, 11 REQUIRED TOP AND 11 REQUIRED BOTTOM

L2 1/2 x 2 1/2 x 1/4 WIND BRACING TOP AND BOTTOM, Typ

CUT THRU JUNCTURE PLATE FOR POST, HOLE DIAMETER = POST OD + 1" Max

DRILL THRU JUNCTURE PLATE AND POST PLATE FOR 1 1/2" Dia A-325 HS BOLTS, TOTAL 4

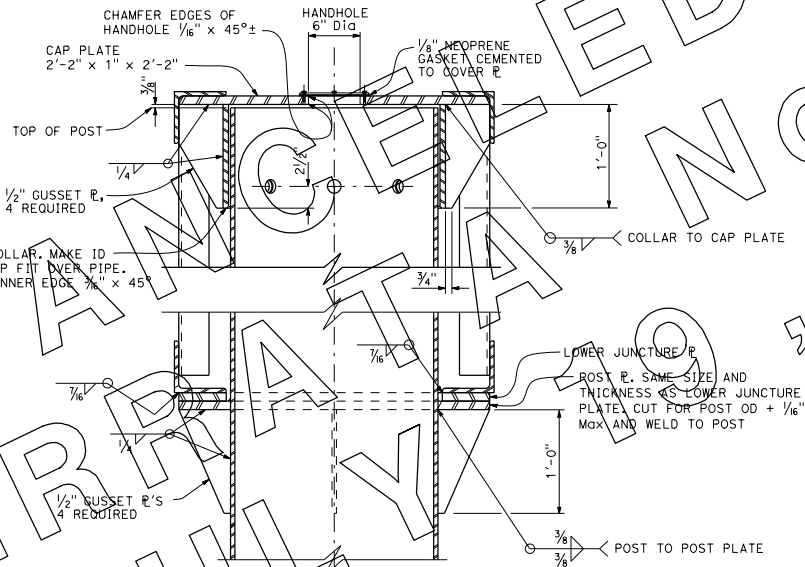
L2 1/2 x 2 1/2 x 1/4 END TIE TOP AND BOTTOM

SECTION A-A  
LOWER JUNCTURE CONNECTION

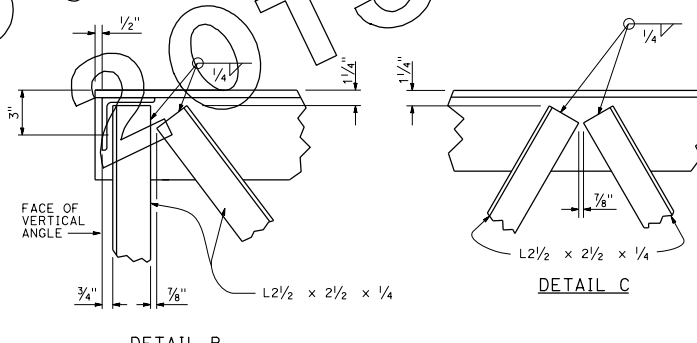
See Standard Plan S129

NOTES:

- In all cases, truss shall be supported at lower juncture connection.
- Post to truss connections shall be fitted in shop.
- For gussets parallel to the sign panel, cut to clear bolts as shown on Standard Plan S129.



SECTION B-B  
See Standard Plan S129



STATE OF CALIFORNIA  
DEPARTMENT OF TRANSPORTATION  
**OVERHEAD SIGN-TRUSS  
SINGLE POST TYPE  
FRAME JUNCTURE DETAILS  
FULL CANTILEVER  
CHANGEABLE MESSAGE SIGNS  
MODEL 510**

NO SCALE

S131

417

2010 STANDARD PLAN S131