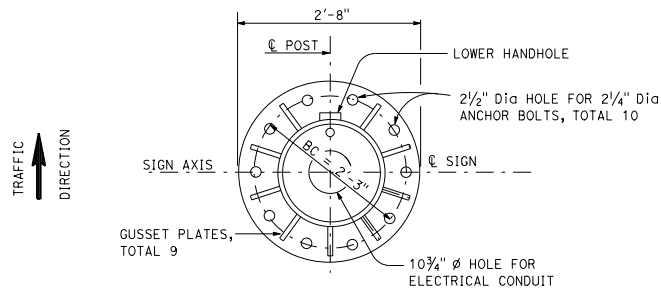


DIST	COUNTY	ROUTE	POST MILES TOTAL PROJECT	SHEET No.	TOTAL SHEETS

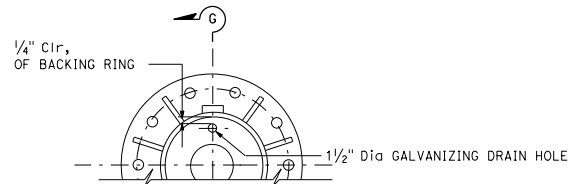
Stanley P. Johnson
 REGISTERED CIVIL ENGINEER
 No. C6738
 Exp. 3-31-12
 CIVIL
 STATE OF CALIFORNIA

May 20, 2011
 PLANS APPROVAL DATE

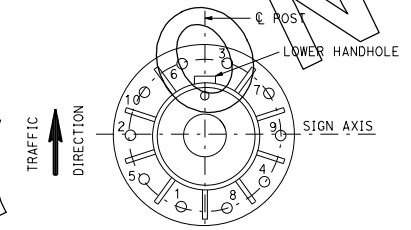
THE STATE OF CALIFORNIA OR ITS OFFICERS OR AGENTS SHALL NOT BE RESPONSIBLE FOR THE ACCURACY OR COMPLETENESS OF SCANNED COPIES OF THIS PLAN SHEET.



10 BOLTS
BASE PLATE DETAILS



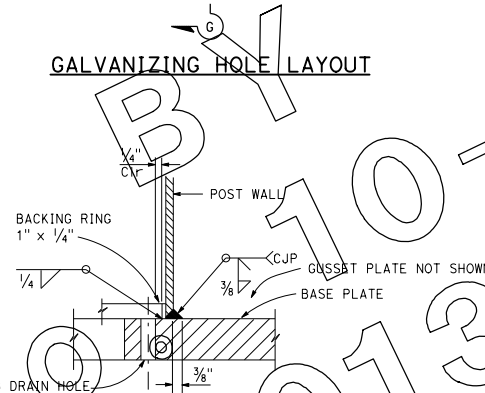
GALVANIZING HOLE LAYOUT



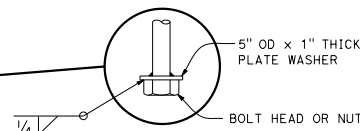
TIGHTENING SEQUENCE

NOTES:

1. Thread upper 10" and galvanize upper 1'-0" of the anchor bolts.
2. Provide anchor bolt templates during installation of anchor bolts. Templates to match base plate anchor bolts pattern. See Standard Plans S3 for typical use of templates. OD = 2'-7", ID = 1'-11", BC = 2'-3", HOLES = 2 5/8" Max, permanent template thickness = 3/4", temporary template thickness = 1/2".
3. Following initial tightening, upper nuts shall be brought to a snug tight condition. This can be obtained by a few impacts of an impact wrench or the full effort of a man using an ordinary spud wrench. Snug tightening shall progress systematically according to the tightening sequence as shown. Upper nuts and washers to have full even bearing on base plate.
4. For drain holes and central void in mortar, see Standard Plan ES-6B detail N.



SECTION G-G
WELDING DETAIL



ANCHORAGE DETAIL

2 1/4" Dia ANCHOR BOLTS WITH NUT, LEVELING NUT, 2 FLAT WASHERS, AND PLATE WASHER PER BOLT. LEVELING NUTS AND WASHERS TO BE ADJUSTED FOR FULL EVEN BEARING ON BASE PLATE PRIOR TO FINAL TIGHTENING OF UPPER NUTS. SEE NOTE 3.

5/8" THICK GUSSET PLATES, SEE Std PLAN S142

BASE PLATE 2'-8" Dia, 3/4" THICKNESS
TOR OF CIDH PILE

ANCHOR BOLT TEMPLATE (PERMANENT) SEE NOTE 2

CONDUIT, SEE ELECTRICAL PLANS

ELEVATION

STATE OF CALIFORNIA
DEPARTMENT OF TRANSPORTATION

**OVERHEAD SIGN-TRUSS
SINGLE POST TYPE
ANCHORAGE AND BASE
PLATE DETAILS
CHANGEABLE MESSAGE SIGNS
MODEL 510**

NO SCALE

S134