
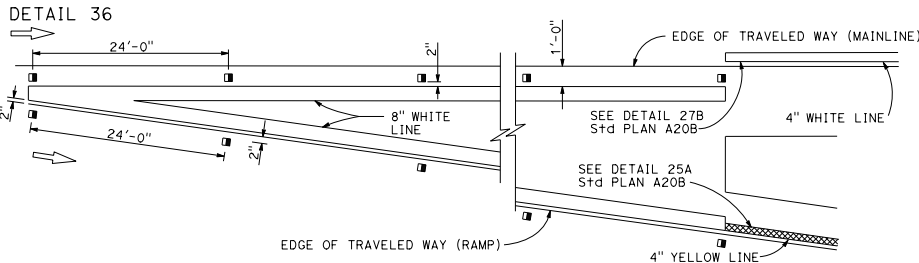


DIST	COUNTY	ROUTE	POST MILES TOTAL PROJECT	SHEET NO.	TOTAL SHEETS

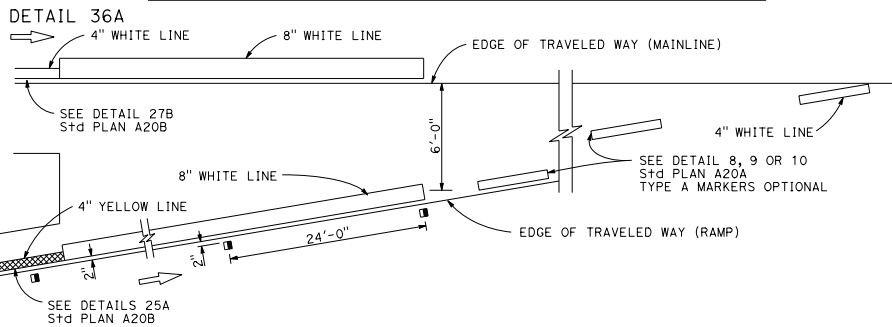

  
 REGISTERED CIVIL ENGINEER  
 Roberto L. McLaughlin  
 No. C40375  
 Exp. 3-31-15  
 CIVIL  
 STATE OF CALIFORNIA

July 19, 2013  
 PLANS APPROVAL DATE  
 THE STATE OF CALIFORNIA OR ITS OFFICERS OR AGENTS SHALL NOT BE RESPONSIBLE FOR THE ACCURACY OR COMPLETENESS OF SCANNED COPIES OF THIS PLAN SHEET.

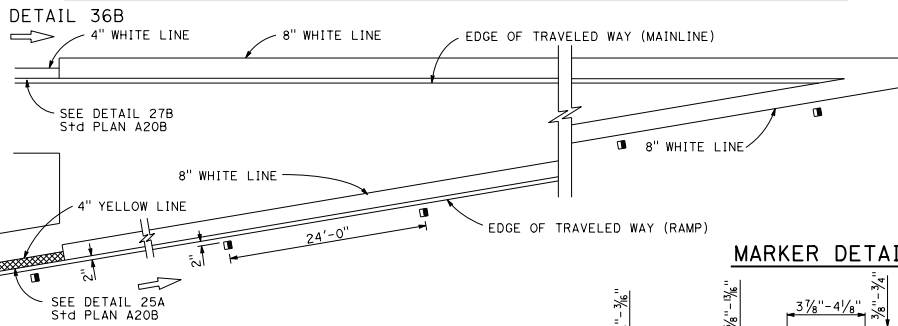
**EXIT RAMP NEUTRAL AREA (GORE) TREATMENT**



**ENTRANCE RAMP NEUTRAL AREA (MERGE) TREATMENT**



**ENTRANCE RAMP NEUTRAL AREA (ACCELERATION LANE) TREATMENT**

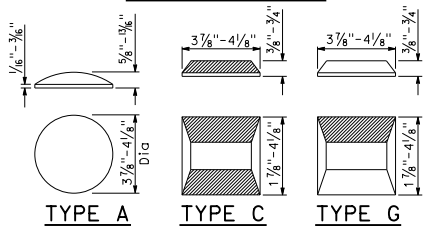


**MARKER DETAILS**

**LEGEND:**

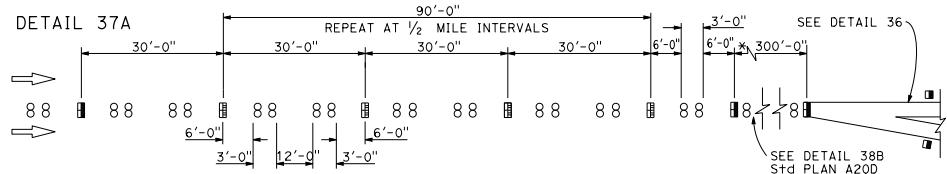
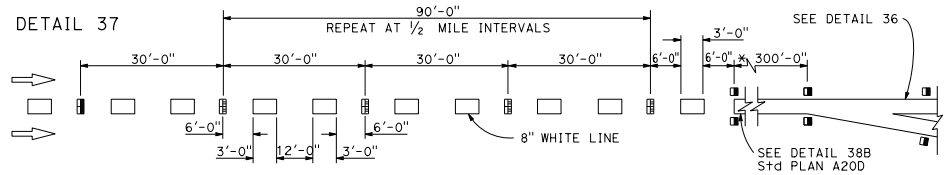
**MARKERS**

- TYPE A WHITE NON-REFLECTIVE
- ◻ TYPE C RED-CLEAR RETROREFLECTIVE
- ◼ TYPE G ONE-WAY CLEAR RETROREFLECTIVE



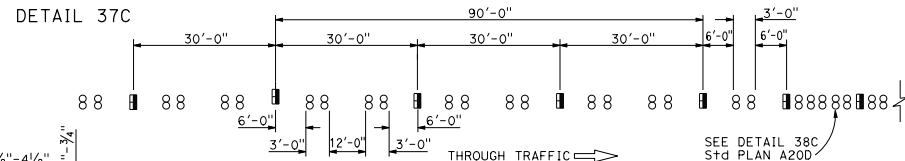
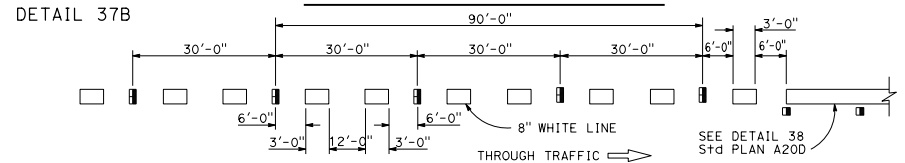
RETROREFLECTIVE FACE

**LANE DROP AT EXIT RAMP**



\* The solid channelizing line shown may be omitted on short auxiliary lanes where weaving length is critical.

**LANE DROP AT INTERSECTIONS**



STATE OF CALIFORNIA  
DEPARTMENT OF TRANSPORTATION

**PAVEMENT MARKERS  
AND TRAFFIC LINE  
TYPICAL DETAILS**

NO SCALE

RSP A20C DATED JULY 19, 2013 SUPERSEDES STANDARD PLAN A20C  
DATED MAY 20, 2011 - PAGE 11 OF THE STANDARD PLANS BOOK DATED 2010.

**REVISED STANDARD PLAN RSP A20C**

2010 REVISED STANDARD PLAN RSP A20C