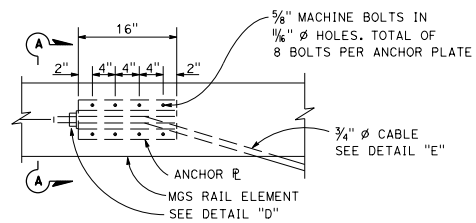


Dist	COUNTY	ROUTE	POST MILES TOTAL PROJECT	SHEET No.	TOTAL SHEETS
<i>Randell D. Hiatt</i> REGISTERED CIVIL ENGINEER					
July 19, 2013 PLANS APPROVAL DATE					
No. C60200 Exp. 6-30-15 CIVIL					
<small>THE STATE OF CALIFORNIA OR ITS OFFICERS OR AGENTS SHALL NOT BE RESPONSIBLE FOR THE ACCURACY OR COMPLETENESS OF SCANNED COPIES OF THIS PLAN SHEET.</small>					

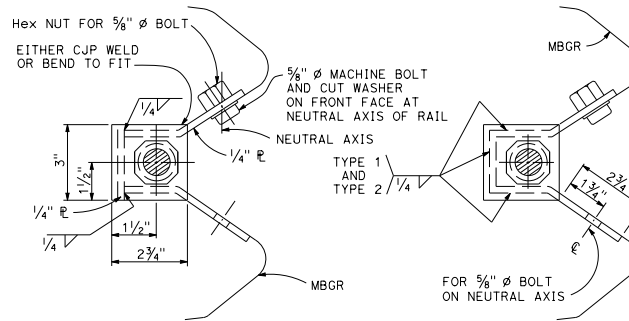
TO ACCOMPANY PLANS DATED _____

NOTE:

See Revised Standard Plans RSP A77S1, RSP A77S2 and RSP A77T1 for typical use of anchor cable and anchor plate.



ANCHOR PLATE DETAIL
(MGS shown, TBB similar)

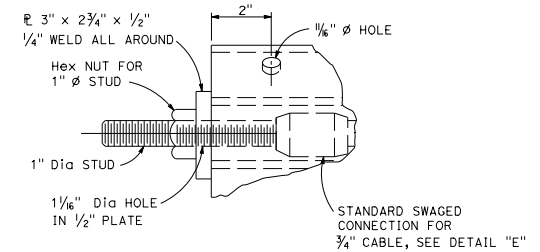


SECTION A-A
(ALTERNATIVE TYPE 1)

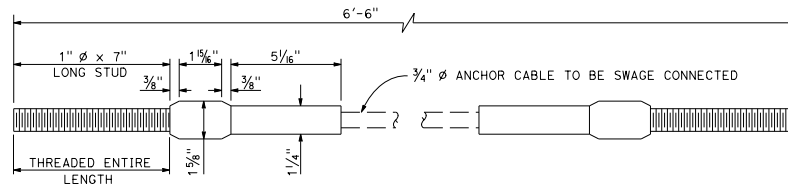
SECTION A-A
(ALTERNATIVE TYPE 2)

NOTE:

Dimensioning applies to both types.



DETAIL "D"



**ANCHOR CABLE WITH
SWAGED FITTING AND STUD**
DETAIL "E"

STATE OF CALIFORNIA
DEPARTMENT OF TRANSPORTATION
**METAL RAILING
ANCHOR CABLE AND
ANCHOR PLATE DETAILS**

NO SCALE

RSP A77S3 DATED JULY 19, 2013 SUPPLEMENTS THE STANDARD PLANS BOOK DATED 2010.

REVISED STANDARD PLAN RSP A77S3

2010 REVISED STANDARD PLAN RSP A77S3