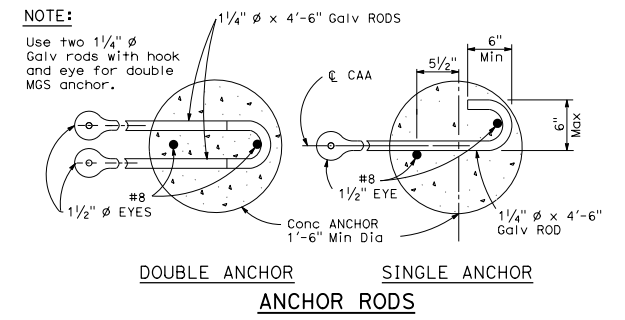
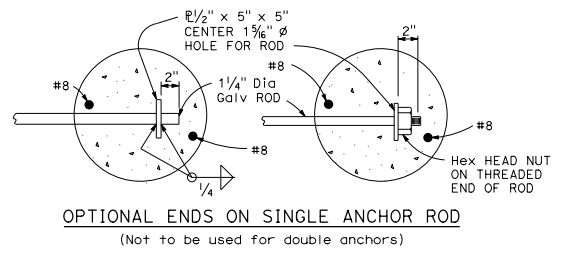
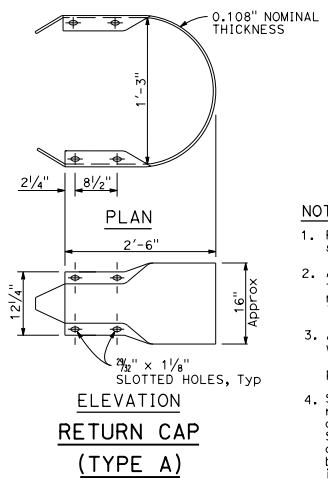
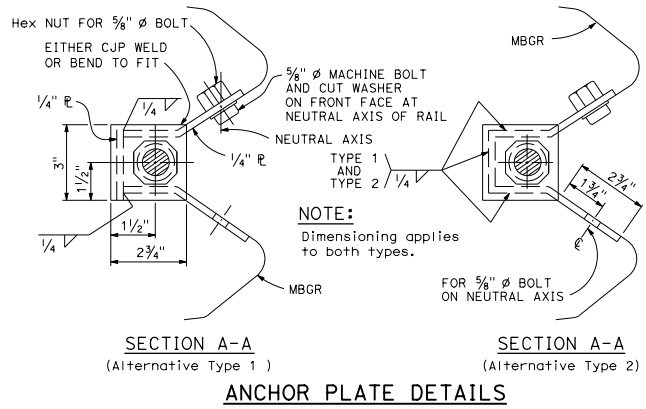
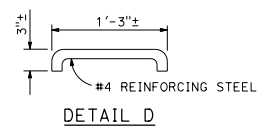
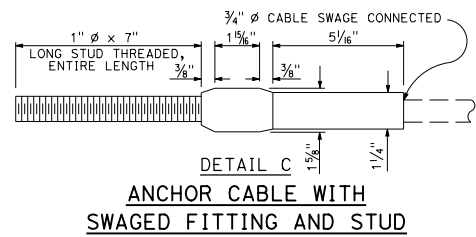
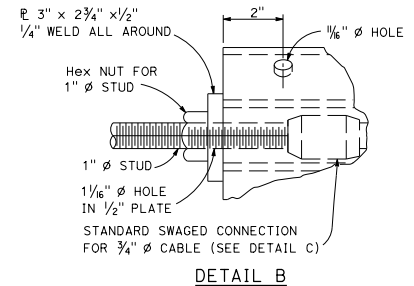
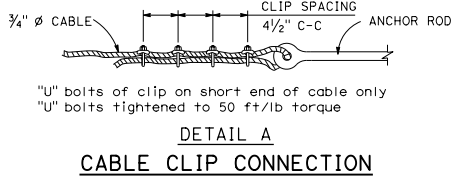
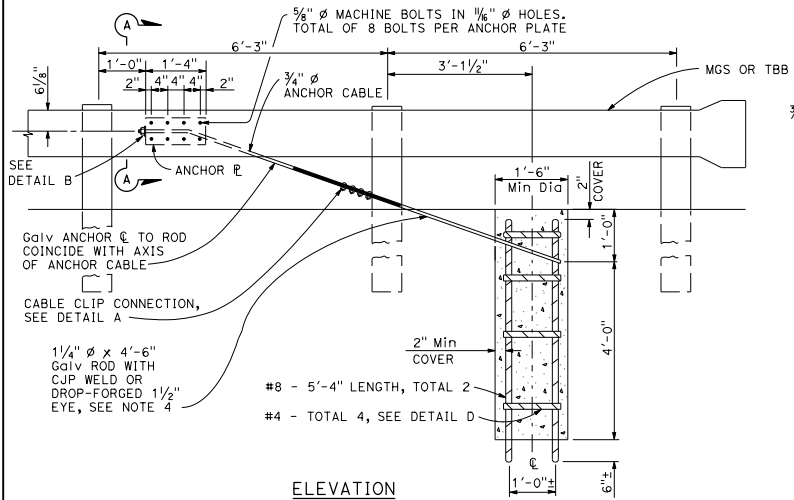


RETURN CAP (TYPE TA) FOR DOUBLE THRIE BEAM OR RETURN CAP (TYPE A) FOR DOUBLE MGS. END CAP (TYPE A) FOR SINGLE MGS OR END CAP (TYPE TC) FOR SINGLE THRIE BEAM



NOTE:
Use two 1/4 inch Galv rods with hook and eye for double MGS anchor.

DIST	COUNTY	ROUTE	POST MILES TOTAL PROJECT	SHEET NO.	TOTAL SHEETS

Randell D. Hiatt
REGISTERED CIVIL ENGINEER

July 19, 2013
PLANS APPROVAL DATE

THE STATE OF CALIFORNIA OR ITS OFFICERS OR AGENTS SHALL NOT BE RESPONSIBLE FOR THE ACCURACY OR COMPLETENESS OF SCANNED COPIES OF THIS PLAN SHEET.

- TO ACCOMPANY PLANS DATED _____
- NOTES:**
- For typical use of this type of end anchor, see Revised Standard Plan RSP A78P2.
 - Anchor cable to be parallel to railing for straight runs of rail. Anchor cable may have angle point at anchor plate if railing is curved.
 - Anchor rod hooks to be in contact with anchor reinforcement when concrete is placed. Wire ties may be used to position anchor rods.
 - Single sided railing installations require only one anchor plate, anchor rod and anchor cable. Single sided railing will not have a rail element or blockouts on backside of line posts as shown in the plan view.

STATE OF CALIFORNIA
DEPARTMENT OF TRANSPORTATION

METAL RAILING END ANCHOR ASSEMBLY (TYPE CA)
NO SCALE

RSP A77T1 DATED JULY 19, 2013 SUPPLEMENTS THE STANDARD PLANS BOOK DATED 2010.

REVISED STANDARD PLAN RSP A77T1

2010 REVISED STANDARD PLAN RSP A77T1