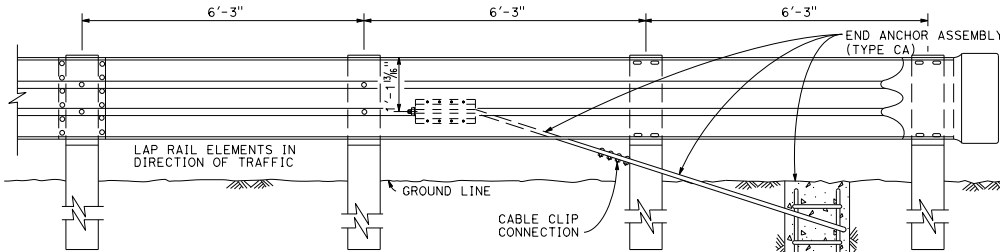
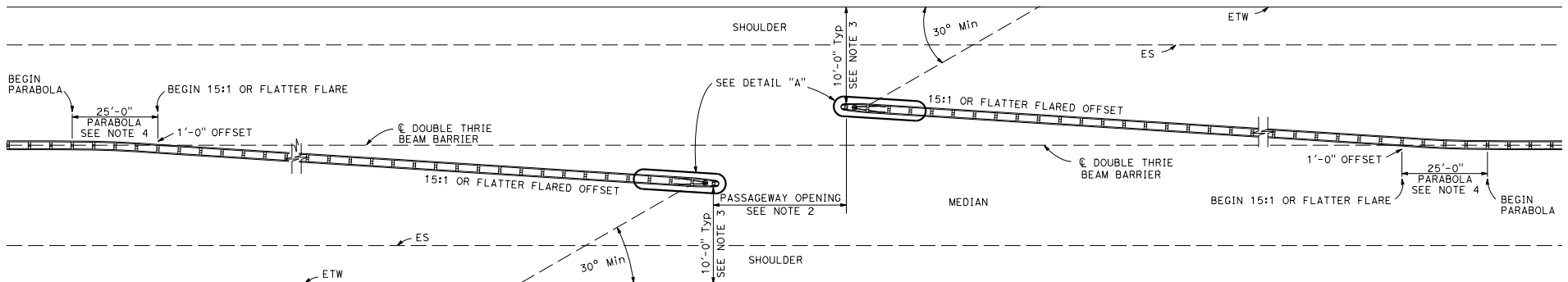


PLAN



ELEVATION  
END ANCHOR FOR DOUBLE THRIE BEAM BARRIER  
DETAIL "A"



PLAN  
EMERGENCY PASSAGWAY  
IN THRIE BEAM BARRIER

Dist	COUNTY	ROUTE	POST MILES TOTAL PROJECT	SHEET No.	TOTAL SHEETS

*Randell D. Hiatt*  
REGISTERED CIVIL ENGINEER

July 19, 2013  
PLANS APPROVAL DATE

THE STATE OF CALIFORNIA OR ITS OFFICERS OR AGENTS SHALL NOT BE RESPONSIBLE FOR THE ACCURACY OR COMPLETENESS OF SCANNED COPIES OF THIS PLAN SHEET.

STATE OF CALIFORNIA  
REGISTERED PROFESSIONAL ENGINEER  
Randell D. Hiatt  
No. C60200  
Exp. 6-30-15  
CIVIL

TO ACCOMPANY PLANS DATED \_\_\_\_\_

NOTES:

1. For End Anchor Assembly (Type CA) details, see Revised Standard Plan RSP A77T1.
2. The typical passageway opening for motorcycles is 6'-0" to 8'-0". Generally, motorcycle passageways are not used where median width is less than 22'-0". The typical passageway opening for motor vehicles is 12'-0" to 16'-0". Generally, motor vehicle passageways are not used where median width is 32'-0" or less. See Project Plans for width of passageway opening.
3. Barrier end offsets from edge of traveled way vary depending on type of highway facility involved. End offsets other than 10'-0" will be shown on the Project Plans.
4. For typical flare offsets for 25'-0" length parabola with maximum offset of 1'-0", see Revised Standard Plan RSP A77P1.

STATE OF CALIFORNIA  
DEPARTMENT OF TRANSPORTATION  
**DOUBLE THRIE BEAM BARRIER  
EMERGENCY PASSAGWAY  
AND END ANCHOR  
ASSEMBLY DETAILS**

NO SCALE

RSP A78E2 DATED JULY 19, 2013 SUPERSEDES STANDARD PLAN A78E2  
DATED MAY 20, 2011 - PAGE 100 OF THE STANDARD PLANS BOOK DATED 2010.

**REVISED STANDARD PLAN RSP A78E2**

2010 REVISED STANDARD PLAN RSP A78E2