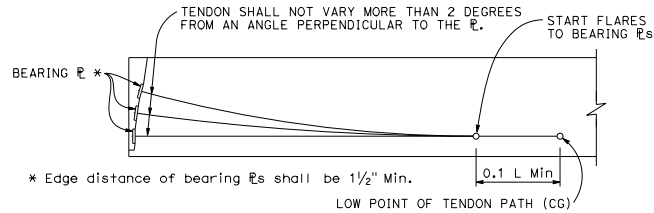


LEGEND:  
o - Denotes beginning or end of tendon horizontal angle change (BC, EC or PCC)

**PLAN**  
**PERSPECTIVE VIEW**  
**DUCT TIES AT TENDON HORIZONTAL ANGLE CHANGES**  
**DETAIL 5-1**



**ELEVATION - BEARING PLATE AND PRESTRESSING PATH**  
**DETAIL 5-2**

DIST	COUNTY	ROUTE	POST MILES TOTAL PROJECT	SHEET NO.	TOTAL SHEETS

REGISTERED CIVIL ENGINEER  
No. C57968  
July 19, 2013  
PLANS APPROVAL DATE

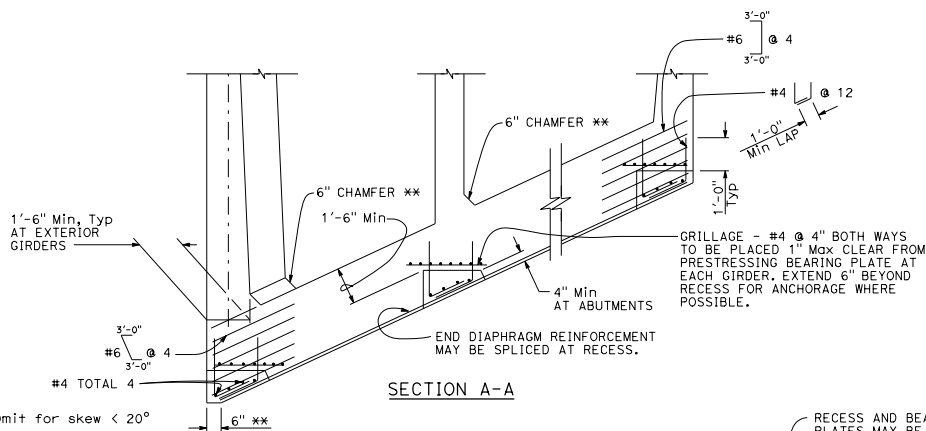
THE STATE OF CALIFORNIA OR ITS OFFICERS OR AGENTS SHALL NOT BE RESPONSIBLE FOR THE ACCURACY OR COMPLETENESS OF SCANNED COPIES OF THIS PLAN SHEET.

REGISTERED PROFESSIONAL ENGINEER  
Marc Friedheim  
No. C57968  
Exp. 6-30-14  
CIVIL  
STATE OF CALIFORNIA

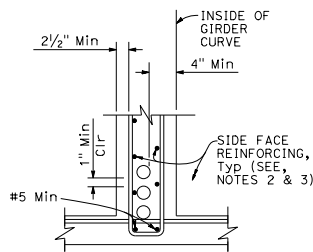
TO ACCOMPANY PLANS DATED \_\_\_\_\_

**NOTES FOR DETAIL 5-1**

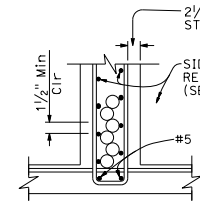
1. Tendon horizontal angle change at end diaphragm shown. Duct tie placement similar for other locations where tendon horizontal angle changes occur. For curved girders place duct ties at tendon angle changes where tendon radius is smaller than tendon girder radius.
2. Adjacent duct ties may be staggered to facilitate placement if stirrup spacing is less than 12 inches.
3. Place closed end of duct ties toward inside of tendon curve.
4. Wrap duct ties around both stirrup legs.
5. Individual duct ties may only be used to anchor one duct.



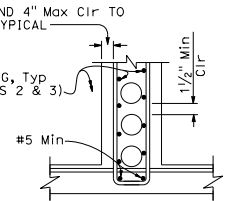
**SECTION A-A**  
**PRESTRESS ANCHORAGE DETAILS AT END DIAPHRAGMS**  
**DETAIL 5-3**



**DUCTS 4 1/2" OD AND LESS FOR HORIZONTAL CURVE RADIUS ≤ 2000'**



**DUCTS 4 1/2" OD AND LESS**



**DUCTS OVER 4 1/2" OD**

**CLEARANCE REQUIREMENTS FOR DUCTS**  
**DETAIL 5-4**

**NOTES FOR DETAIL 5-4:**

1. Stirrups may also be used.
2. For additional details, see Standard Plan B7-1, and Project Plans.
3. Bar reinforcing which interferes with prestressing ducts may be adjusted as approved by the Engineer.

STATE OF CALIFORNIA  
DEPARTMENT OF TRANSPORTATION

**CAST-IN-PLACE POST-TENSIONED GIRDER DETAILS**

NO SCALE

RSP B8-5 DATED JULY 19, 2013 SUPERSEDES STANDARD PLAN B8-5 DATED MAY 20, 2011 - PAGE 291 OF THE STANDARD PLANS BOOK DATED 2010.

**REVISED STANDARD PLAN RSP B8-5**