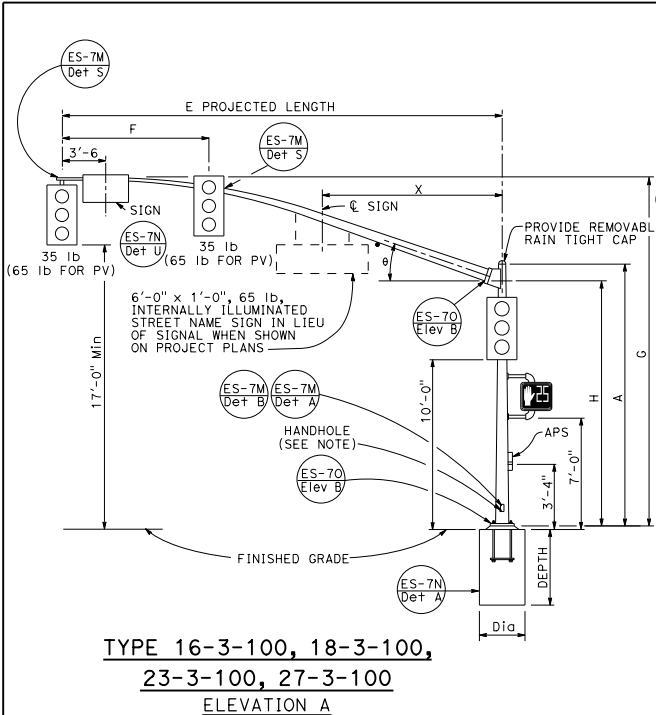


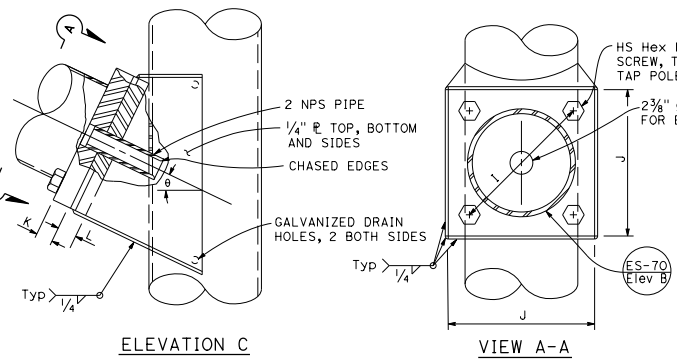
DIST	COUNTY	ROUTE	POST MILES TOTAL PROJECT	SHEET TOTAL SHEETS

Stanley P. Johnson
 REGISTERED CIVIL ENGINEER
 No. C6793
 Exp. 3-31-14
 CIVIL
 STATE OF CALIFORNIA

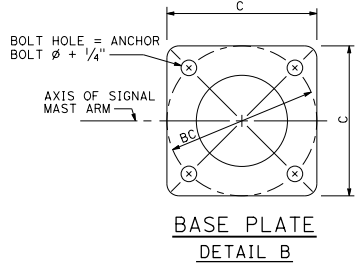
July 19, 2013
 PLANS APPROVAL DATE
 THE STATE OF CALIFORNIA OR ITS OFFICERS OR AGENTS SHALL NOT BE RESPONSIBLE FOR THE ACCURACY OR COMPLETENESS OF SCANNED COPIES OF THIS PLAN SHEET.



**TYPE 16-3-100, 18-3-100,
23-3-100, 27-3-100**
ELEVATION A



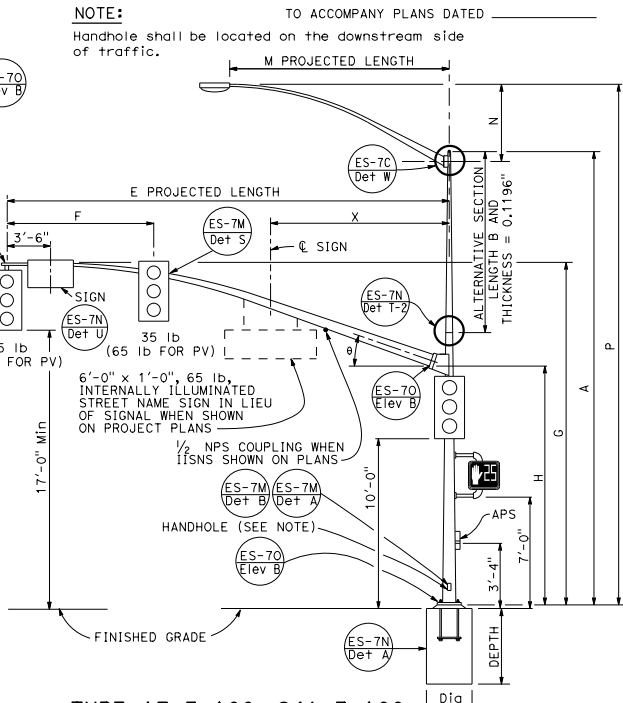
SIGNAL MAST ARM CONNECTION
DETAIL A



BASE PLATE
DETAIL B

E PROJECTED LENGTH	F Min SPACING	G MOUNTING HEIGHT	H	Min OD AT POLE	THICKNESS	I BOLT CIRCLE	HS CAP SCREWS	J PLATE SIZE	K MAST ARM THICKNESS	L POLE THICKNESS	θ	X Max
15'-0"	8'-0"	21'-8"±	17'-6"	7 7/8"	0.1793"	12"		1'-0"	1 1/4"	1 1/2"	23°	-
20'-0"		21'-8"±		7 7/8"								
25'-0"	12'-0"	22'-8"±		7 7/8"								
30'-0"		22'-8"±		8"								
35'-0"	14'-0"	23'-0"±	16'-0"	8 3/4"	0.2391"	13"	1 1/4"-7NC-3"	1'-1"	1 1/2"	1 3/4"	21°	10'-6"
40'-0"		23'-8"±		9 3/8"								
45'-0"	15'-0"	23'-8"±		10 1/8"							15°	13'-0"

M PROJECTED LENGTH	N RISE	Min OD AT POLE	THICKNESS	P MOUNTING HEIGHT
6'-0"	2'-0"±	3 1/4"	0.1196"	30'-0" POLE 35'-0" POLE
8'-0"	2'-6"±	3 1/2"		31'-6"± 36'-6"±
10'-0"	3'-3"±	3 3/8"		32'-0"± 37'-0"±
12'-0"	4'-3"±	3 7/8"		32'-9"± 37'-9"±
15'-0"	4'-9"±	4 1/4"		33'-9"± 38'-9"±
				34'-3"± 39'-3"±



**TYPE 17-3-100, 24A-3-100,
19-3-100, 26-3-100,
19A-3-100, 26A-3-100, 24-3-100**
ELEVATION B

POLE TYPE	LOAD CASE	WIND VELOCITY (mph)	POLE DATA				BASE PLATE DATA				CIDH PILE FOUNDATION				
			A HEIGHT	Min OD	THICKNESS	ALTERNATIVE SECTION	C	BC = BOLT CIRCLE	THICKNESS	ANCHOR BOLT SIZE	LUMINAIRE MAST ARM	SIGNAL MAST ARM	DIAMETER	DEPTH	REINFORCED
16-3-100			18'-6"	8 1/8"	0.1793"	NONE	1'-5 1/2"			NONE	15'-0"				
17-3-100			30'-0"	10 3/4"	0.1793"	10'-0"	7 7/8" 6 7/8"			6'-15" 12'-0"	20'-0"		8'-6"		
18-3-100			17'-0"	8 7/8"		NONE				NONE			9'-6"		
19-3-100			30'-0"	7 1/8"		10'-0"	9 1/8" 7 1/8"			6'-15" 12'-0"	25'-0"				
19A-3-100			35'-0"	6 5/8"		15'-0"	6 5/8"			6'-15" 15'-0"	30'-0"				
23-3-100			17'-0"	9 3/8"	0.2391"	NONE	1'-7"	1'-5 1/2"		NONE					
24-3-100			30'-0"	7 1/8"		10'-0"	7 1/8"			6'-15" 12'-0"	35'-0"				
24A-3-100			35'-0"	6 5/8"		15'-0"	6 5/8"			6'-15" 15'-0"					
26-3-100			30'-0"	7 1/8"		10'-0"	7 1/8"			6'-15" 12'-0"					
26A-3-100			35'-0"	7 1/8"	0.3125"	15'-0"	9 1/4" 7 1/8"	1'-11"	1'-9"	6'-15" 15'-0"	40'-0"				
27-3-100			17'-0"	9 3/8"		NONE				NONE	45'-0"		3'-6"	12'-0"	

□ INDICATES MAST ARM LENGTH TO BE USED UNLESS OTHERWISE NOTED ON PLANS.

STATE OF CALIFORNIA
DEPARTMENT OF TRANSPORTATION
ELECTRICAL SYSTEMS
(SIGNAL AND LIGHTING STANDARD,
CASE 3 SIGNAL MAST ARM LOADING,
WIND VELOCITY=100 MPH AND SIGNAL
MAST ARM LENGTHS 15' TO 45')
NO SCALE
RSP 7E DATED July 19, 2013 SUPERSEDES STANDARD PLAN 7E
DATED MAY 20, 2011 - PAGE 466 OF THE STANDARD PLANS BOOK DATED 2010.
REVISED STANDARD PLAN RSP ES-7E

2010 REVISED STANDARD PLAN RSP ES-7E