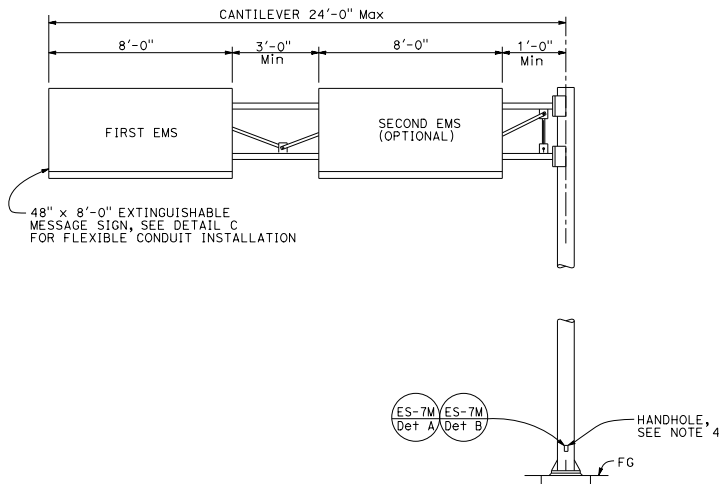
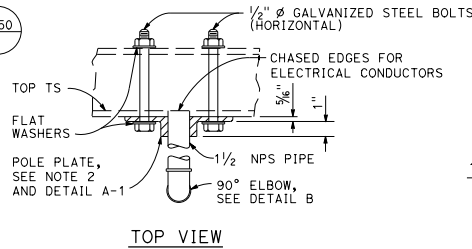


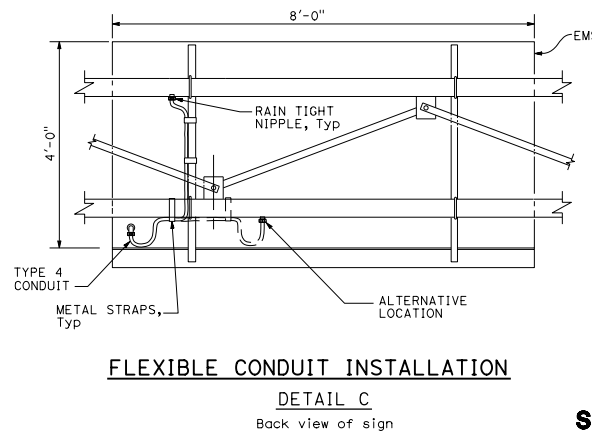
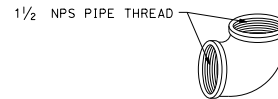
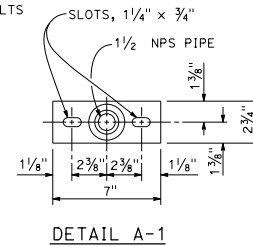
**EMS WITH FLASHING BEACONS**  
ELEVATION A



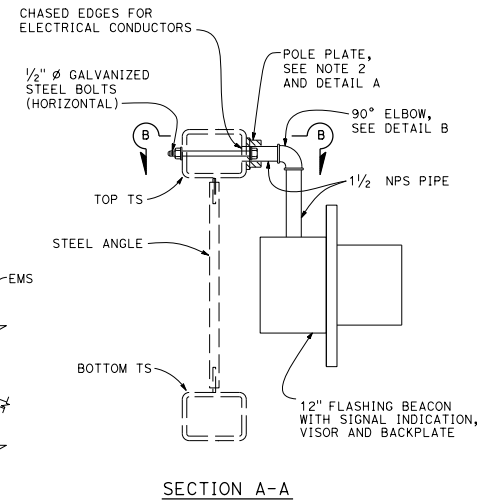
**EMS WITHOUT FLASHING BEACONS**  
ELEVATION B



**POLE PLATE**  
DETAIL A



**FLEXIBLE CONDUIT INSTALLATION**  
DETAIL C  
Back view of sign



STATE OF CALIFORNIA  
DEPARTMENT OF TRANSPORTATION  
**ELECTRICAL SYSTEMS**  
**(EXTINGUISHABLE MESSAGE SIGN ON A FULL CANTILEVER)**  
NO SCALE

RSP ES-14C DATED JULY 19, 2013 SUPERSEDES STANDARD PLAN ES-14C. DATED MAY 20, 2011 - PAGE 495 OF THE STANDARD PLANS BOOK DATED 2010.

**REVISED STANDARD PLAN RSP ES-14C**

DIST	COUNTY	ROUTE	POST MILES TOTAL PROJECT	SHEET No.	TOTAL SHEETS

Stanley P. Johnson  
REGISTERED CIVIL ENGINEER

July 19, 2013  
PLANS APPROVAL DATE

Stanley P. Johnson  
No. C6795  
Exp. 3-31-14  
CIVIL  
REGISTERED PROFESSIONAL ENGINEER  
STATE OF CALIFORNIA

THE STATE OF CALIFORNIA OR ITS OFFICERS OR AGENTS SHALL NOT BE RESPONSIBLE FOR THE ACCURACY OR COMPLETENESS OF SCANNED COPIES OF THIS PLAN SHEET.

TO ACCOMPANY PLANS DATED \_\_\_\_\_

- NOTES:**
1. Pole plate shall be bronze or galvanized ductile iron.
  2. For structure information, see Standard Plan S-50.
  3. Wind loading (3-second gust): 100 mph.
  4. Handhole shall be located on the downstream side of traffic.

2010 REVISED STANDARD PLAN RSP ES-14C