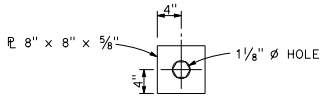
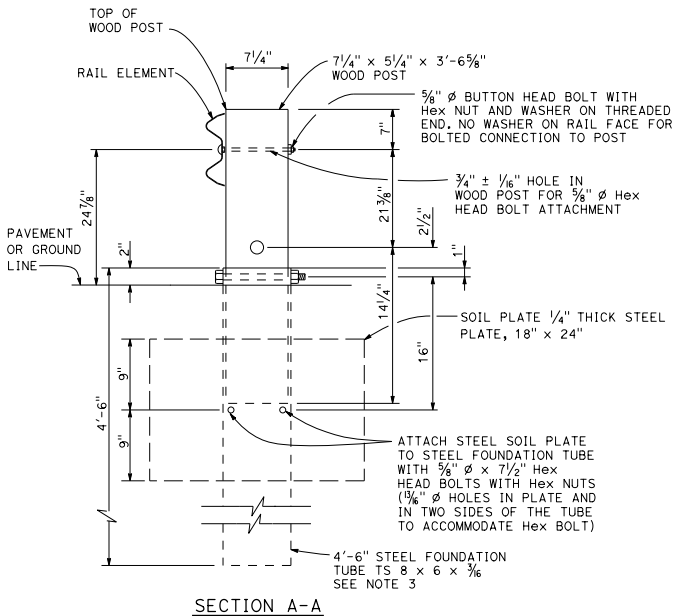
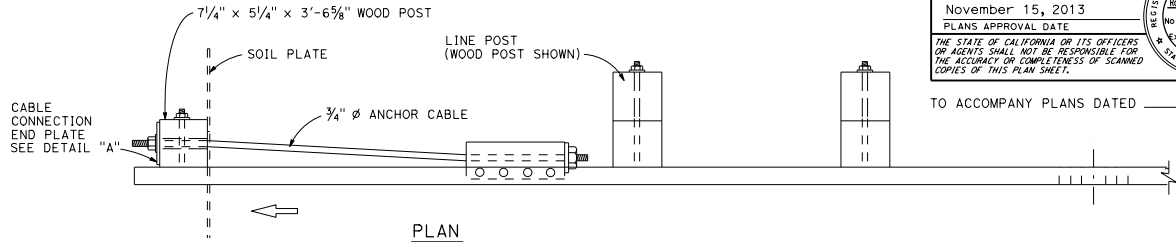


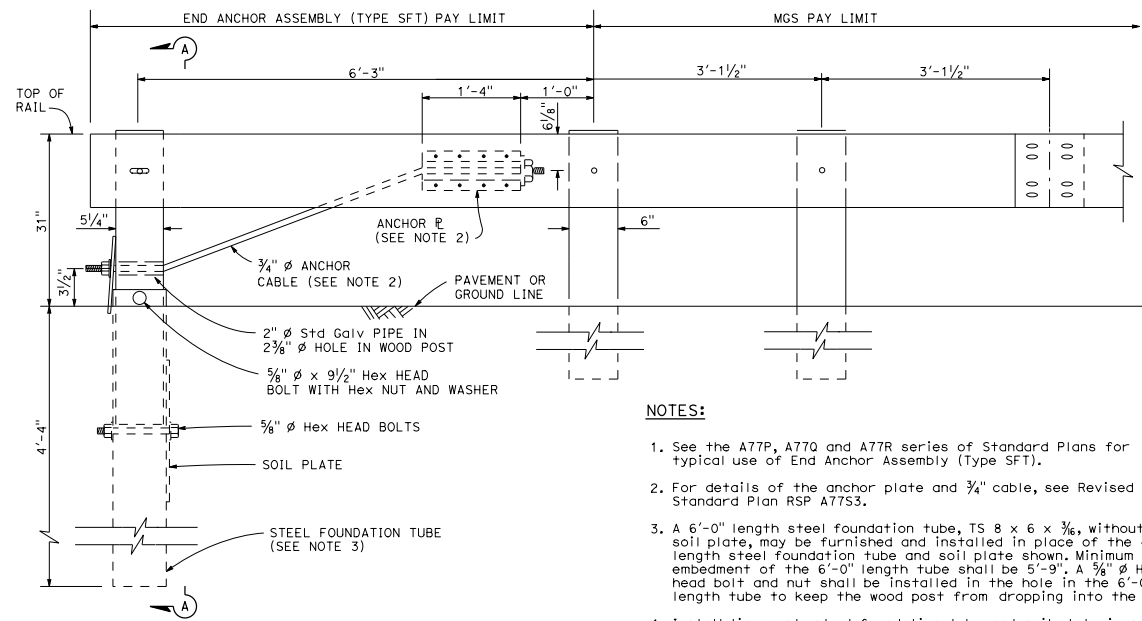
| DIST | COUNTY | ROUTE | POST MILES TOTAL PROJECT | SHEET NO. | TOTAL SHEETS |
|---|--------|-------|--------------------------|-----------|--------------|
| | | | | | |
| Randell D. Hiatt REGISTERED CIVIL ENGINEER November 15, 2013 PLANS APPROVAL DATE THE STATE OF CALIFORNIA OR ITS OFFICERS OR AGENTS SHALL NOT BE RESPONSIBLE FOR THE ACCURACY OR COMPLETENESS OF SCANNED COPIES OF THIS PLAN SHEET. | | | | | |
| TO ACCOMPANY PLANS DATED _____ | | | | | |



DETAIL "A"
CABLE CONNECTION
END PLATE



SECTION A-A



ELEVATION
END ANCHOR
ASSEMBLY (TYPE SFT)
See Note 1

- NOTES:**
1. See the A77P, A77O and A77R series of Standard Plans for typical use of End Anchor Assembly (Type SFT).
 2. For details of the anchor plate and 3/4" cable, see Revised Standard Plan RSP A77S3.
 3. A 6'-0" length steel foundation tube, TS 8 x 6 x 3/8, without a soil plate, may be furnished and installed in place of the 4'-6" length steel foundation tube and soil plate shown. Minimum embedment of the 6'-0" length tube shall be 5'-9". A 3/4" diameter hex head bolt and nut shall be installed in the hole in the 6'-0" length tube to keep the wood post from dropping into the tube.
 4. Install line post, steel foundation tube and soil plate in soil.

STATE OF CALIFORNIA
DEPARTMENT OF TRANSPORTATION
MIDWEST GUARDRAIL SYSTEM
END ANCHOR ASSEMBLY
(TYPE SFT)

NO SCALE
RSP A77S1 DATED NOVEMBER 15, 2013 SUPERSEDES RSP A77S1
DATED JULY 19, 2013 THAT SUPPLEMENTS THE STANDARD PLANS BOOK DATED 2010.
REVISED STANDARD PLAN RSP A77S1

2010 REVISED STANDARD PLAN RSP A77S1