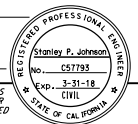
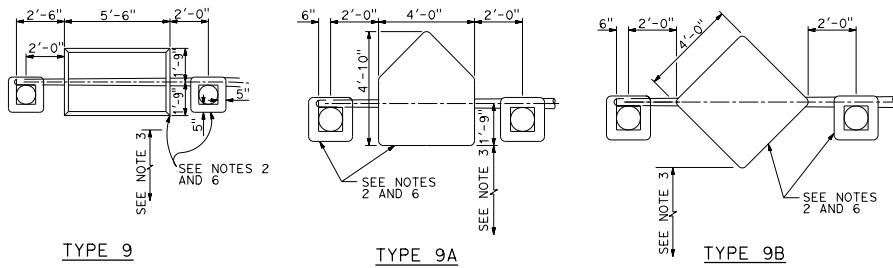


DIST	COUNTY	ROUTE	POST MILES TOTAL PROJECT	SHEET TOTAL SHEETS

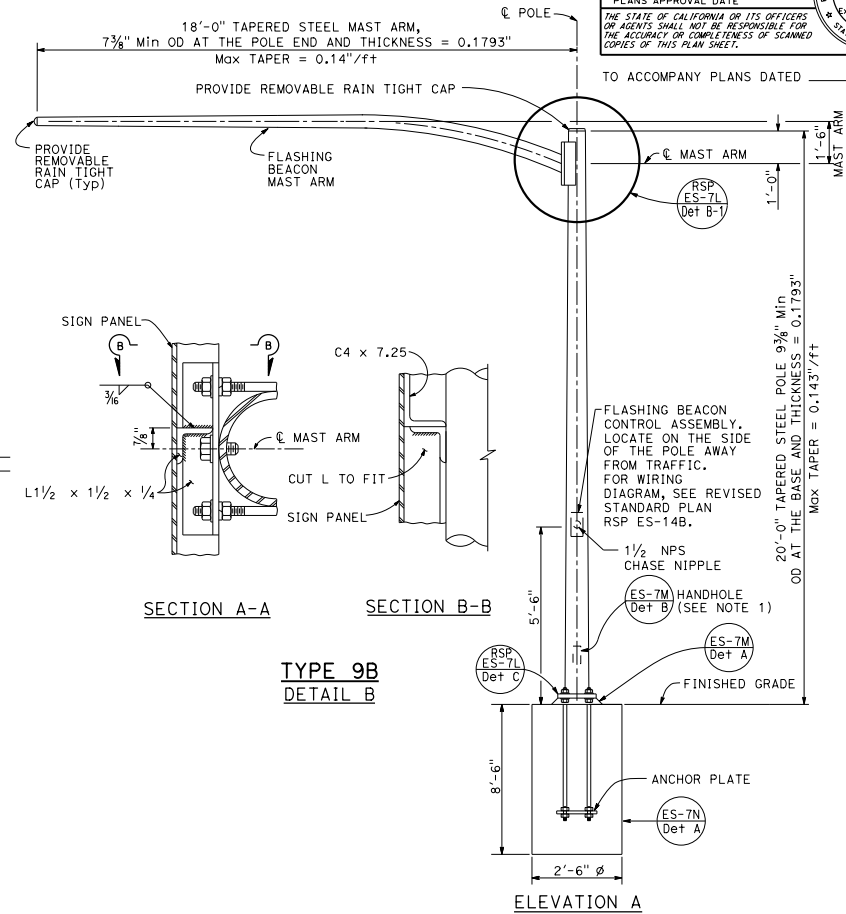
  
 Stanley P. Johnson  
 REGISTERED CIVIL ENGINEER  
 April 15, 2016  
 PLANS APPROVAL DATE  
 THE STATE OF CALIFORNIA OR ITS OFFICERS OR AGENTS SHALL NOT BE RESPONSIBLE FOR THE ACCURACY OR COMPLETENESS OF SCANNED COPIES OF THIS PLAN SHEET.



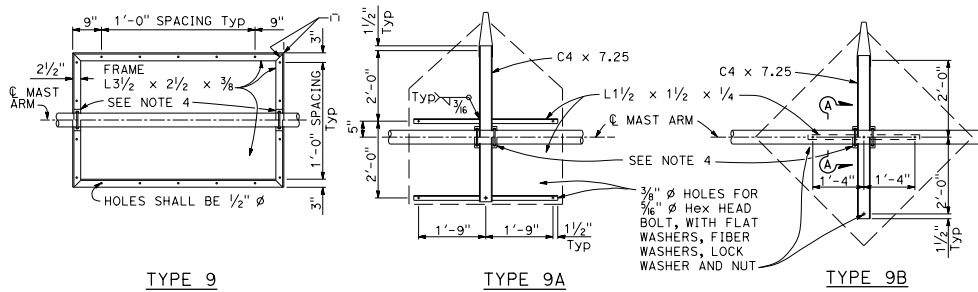
TYPE 9

TYPE 9A

TYPE 9B



ELEVATION A



TYPE 9

TYPE 9A

TYPE 9B

FRAME DETAILS  
DETAIL A

SECTION A-A

SECTION B-B

TYPE 9B  
DETAIL B

**NOTES:**

1. Handhole shall be located on the downstream side of traffic.
2. Install flashing beacons and sign frame. Flashing beacons shall be MAT mounted on pipe tenon (See Standard Plan ES-7M, Detail S).
3. Vertical clearance shall be 17'-0" minimum between roadway and bottom of signal panel.
4. See Revised Standard Plan RSP ES-7L, Detail B, for sign frame mounting details.
5. For additional notes and details, see Revised Standard Plan RSP ES-7L, Detail B-3.
6. 12" flashing beacon with signal indication, standard visor and 5" x 5" backplate (total 2).

STATE OF CALIFORNIA  
DEPARTMENT OF TRANSPORTATION  
**ELECTRICAL SYSTEMS  
(FLASHING BEACON WITH  
TYPE 9, 9A AND 9B SIGN)**  
NO SCALE

RSP ES-7K DATED APRIL 15, 2016 SUPERSEDES STANDARD PLAN ES-7K  
DATED OCTOBER 30, 2015 - PAGE 465 OF THE STANDARD PLANS BOOK DATED 2015.

**REVISED STANDARD PLAN RSP ES-7K**

2015 REVISED STANDARD PLAN RSP ES-7K