
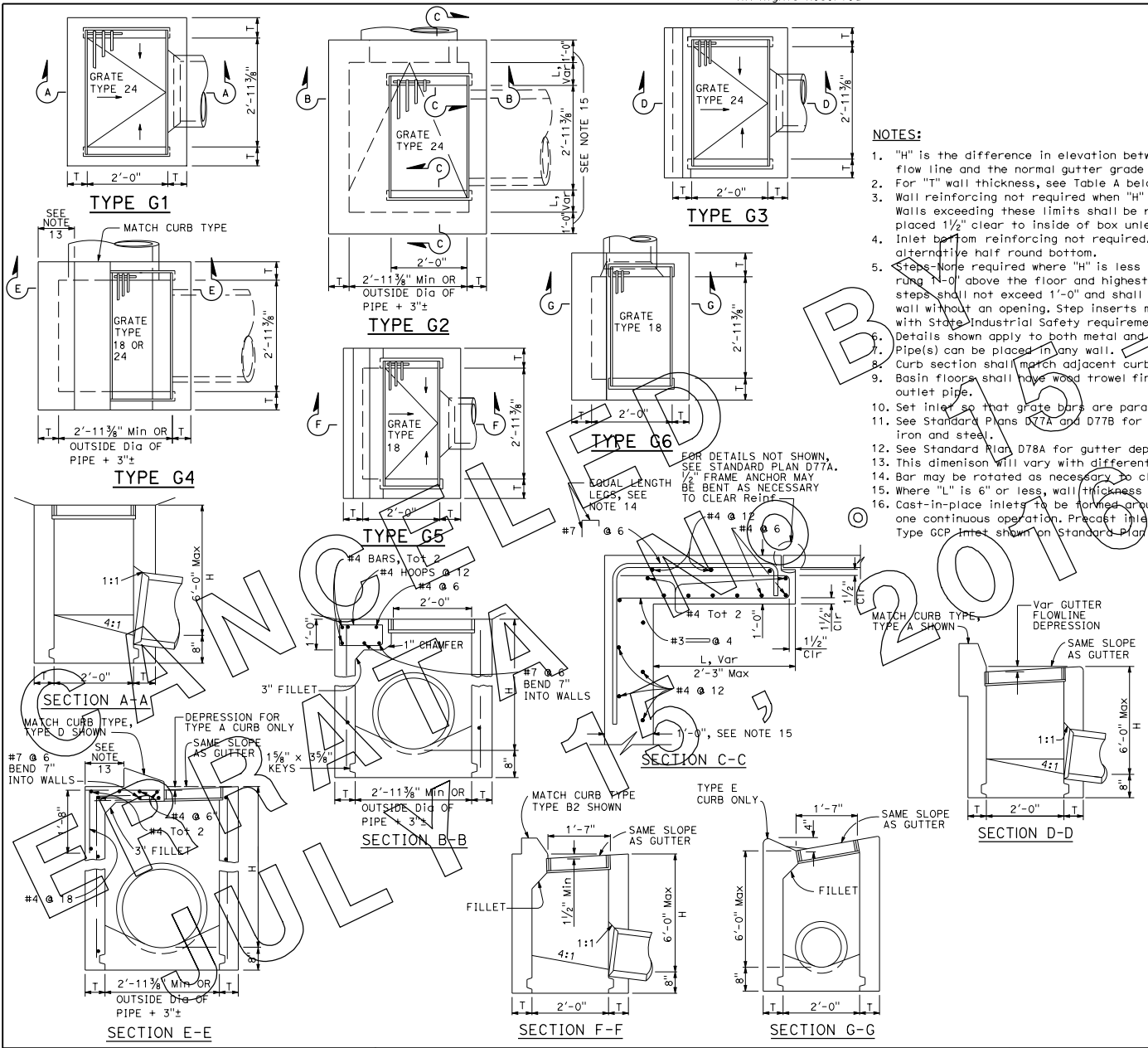


DIST	COUNTY	ROUTE	POST MILES TOTAL PROJECT	SHEET TOTAL SHEETS
				
REGISTERED CIVIL ENGINEER October 30, 2015 PLANS APPROVAL DATE No. C59976 Exp. 6-30-16 CIVIL THE STATE OF CALIFORNIA OR ITS OFFICERS OR AGENTS SHALL NOT BE RESPONSIBLE FOR THE ACCURACY OR COMPLETENESS OF SCANNED COPIES OF THIS PLAN SHEET.				



- NOTES:**
- "H" is the difference in elevation between the outlet pipe flow line and the normal gutter grade line undepressed.
  - For "T" wall thickness, see Table A below.
  - Wall reinforcing not required when "H" is 8'-0" or less and the unsupported width or length is 7'-0" or less. Walls exceeding these limits shall be reinforced with #4 bars @ 1'-6" Centers placed 1/2" clear to inside of box unless otherwise shown.
  - Inlet bottom reinforcing not required. See Standard Plan D74C for alternative reinforced bottom and alternative half round bottom.
  - Steps: None required where "H" is less than 2'-6" where "H" is 2'-6" or more, install steps with lowest rung 1'-0" above the floor and highest rung not more than 6" below top of inlet. The distance between steps shall not exceed 1'-0" and shall be uniform throughout the length of the wall. Place steps in the wall without an opening. Step inserts may be substituted for the bar steps. Step inserts shall comply with State Industrial Safety requirements. See Standard Plan D74C for step details.
  - Details shown apply to both metal and concrete pipe.
  - Pipe(s) can be placed in any wall.
  - Curb section shall match adjacent curb.
  - Basin floors shall have wash trowel finish and a minimum slope of 4:1 from all directions toward outlet pipe.
  - Set inlet so that grate bars are parallel to direction of principal surface flow.
  - See Standard Plans D77A and D77B for grate and frame details and weights of miscellaneous iron and steel.
  - See Standard Plan D78A for gutter depression details.
  - This dimension will vary with different grates, curbs types, box width and wall thickness.
  - Bar may be rotated as necessary to clear opening. Where "L" is 6" or less, bar may be omitted.
  - Where "L" is 6" or less, wall thickness shall be as shown in Table A.
  - Cast-in-place inlets to be formed around all pipes/stubs intersecting the inlet, and concrete poured in one continuous operation. Precast inlets shall have mortared connections conforming to details for Type GCP Inlet shown on Standard Plan D75B. See Standard Specifications for mortar composition.

**TABLE A**  
**CONCRETE QUANTITIES**

TYPE	H=3'-0" TO 8'-0" (T=6")		H=8'-1" TO 20'-0" (T=8")	
	H=3'-0" (CY)	ADDITIONAL PCC PER FOOT (CY)	H=8'-1" (CY)	ADDITIONAL PCC PER FOOT (CY)
G-1	0.95	0.220	**	**
G-2*	1.31	0.255	3.50	0.357
G-3	1.03	0.220	**	**
G-4* (TYPE 24)	1.27	0.255	3.48	0.357
G-4* (TYPE 18)	1.30	0.255	3.50	0.357
G-5	1.02	0.220	**	**
G-6	1.04	0.220	**	**

Table based on 8" floor slab. No deductions are to be made to these quantities because of pipe openings, different floor alternatives or different curb types.

\* Quantities for Type G-2 and G-4 inlets based on the minimum interior dimensions.

\*\* Maximum allowable height 6'-0".

STATE OF CALIFORNIA  
DEPARTMENT OF TRANSPORTATION  
**DRAINAGE INLETS**

NO SCALE

**D73**

2015 STANDARD PLAN D73