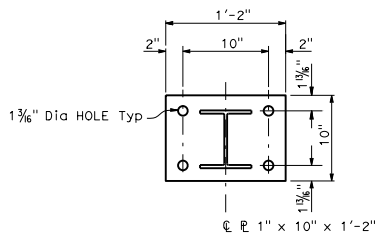
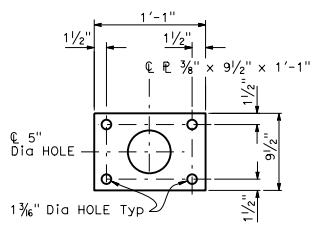


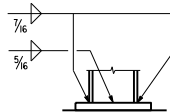
BRIDGE RAILING ELEVATION



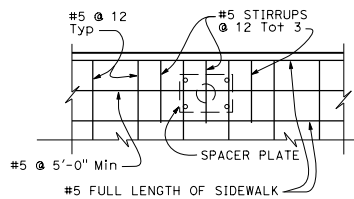
POST BASE PLATE PLAN



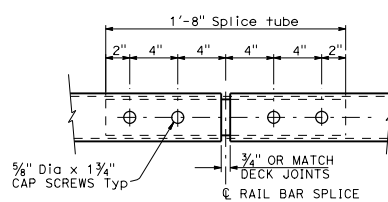
SPACER PLATE PLAN



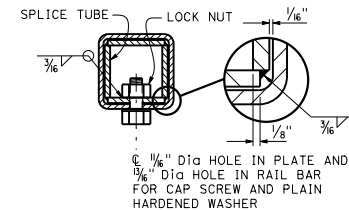
POST
BASE WELD
DETAIL



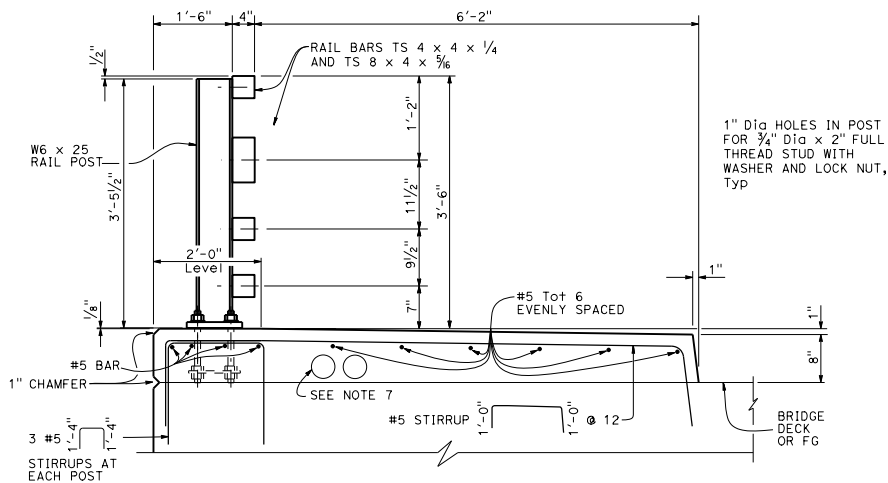
SIDEWALK REINFORCING PLAN



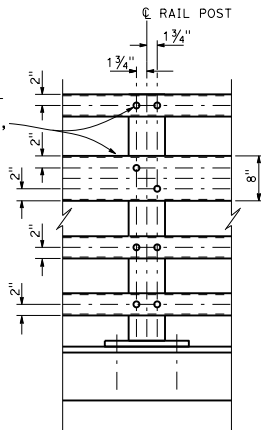
BOTTOM VIEW
RAIL BAR SPLICE DETAIL



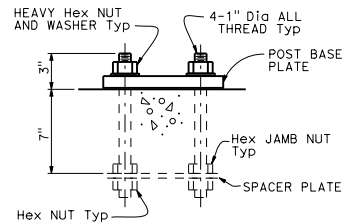
RAIL BAR
SPLICE SECTION



TYPICAL SECTION



ELEVATION



RAIL POST
ANCHORAGE

NOTES:

- All exposed cuts or sheared edges shall be rounded and free of burrs.
- Rail posts shall be set normal to grade.
- Lengths of rail bar shall be attached to a minimum of two rail posts.
- Rail post anchoring nuts shall be tightened to a snug fit and given additional 1/8 turn.
- Holes in posts for rail bar attachment may be field drilled. Holes shall be coated with an approved zinc-rich paint prior to erection.
- This barrier is to be used only for speeds of 45 mph or less. For speeds greater than 45 mph, pedestrians should be protected by a separation traffic barrier.
- A maximum of six - 4" and a minimum of two - 4" round openings for future utilities. Openings are to be sealed at ends and extended 8" minimum past end of sidewalk if not used. Duct forms are to be tied down. Round openings are to be a minimum of 1'-6" from face of sidewalk curb and a minimum of 6" from face of rail. See Standard Plan B14-3 for minimum spaces between conduits and for conduit details at joints.

STATE OF CALIFORNIA
DEPARTMENT OF TRANSPORTATION
**CALIFORNIA ST-40
BRIDGE RAIL
(SHEET 1 OF 2)**
NO SCALE

RSP B11-66 DATED JULY 15, 2016 SUPERSEDES STANDARD PLAN B11-66
DATED OCTOBER 30, 2015 - PAGE 324 OF THE STANDARD PLANS BOOK DATED 2015.
REVISED STANDARD PLAN RSP B11-66

Dist	COUNTY	ROUTE	POST MILES TOTAL PROJECT	SHEET NO.	TOTAL SHEETS

REGISTERED CIVIL ENGINEER
Tilgert Satter
No. C42892
PLANS APPROVAL DATE
July 15, 2016
Exp. 3-31-18
CIVIL
STATE OF CALIFORNIA

THE STATE OF CALIFORNIA OR ITS OFFICERS OR AGENTS SHALL NOT BE RESPONSIBLE FOR THE ACCURACY OR COMPLETENESS OF SCANNED COPIES OF THIS PLAN SHEET.

TO ACCOMPANY PLANS DATED _____

2015 REVISED STANDARD PLAN RSP B11-66