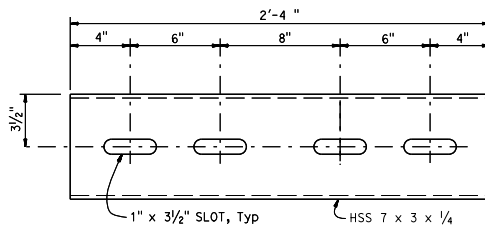
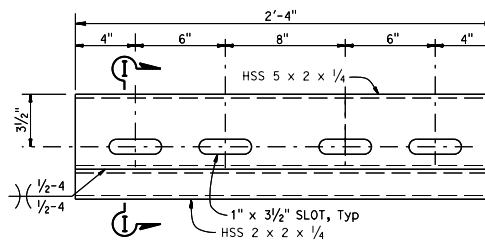


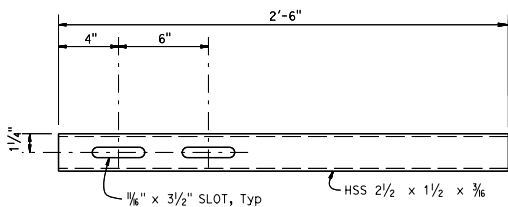
(FOR HSS 3 x 2 x 3/8 RAIL)
STANDARD SLEEVE DETAIL



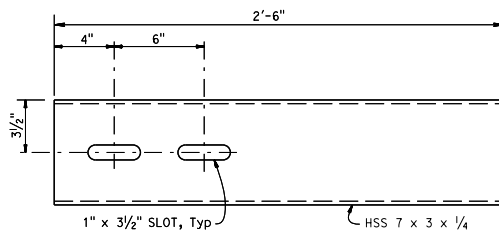
(FOR HSS 8 x 4 x 5/8 RAIL)
STANDARD SLEEVE DETAIL



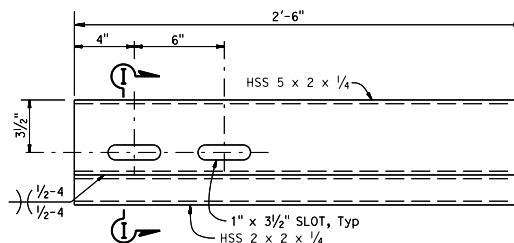
(FOR HSS 8 x 3 x 5/8 RAIL)
STANDARD SLEEVE DETAIL



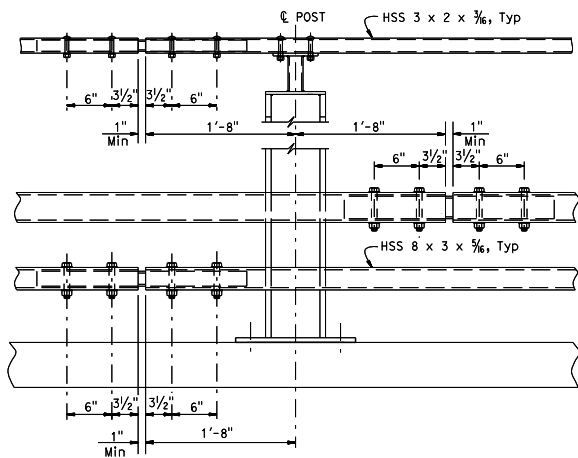
(FOR HSS 3 x 2 x 3/8 RAIL)
EXPANSION SLEEVE DETAIL



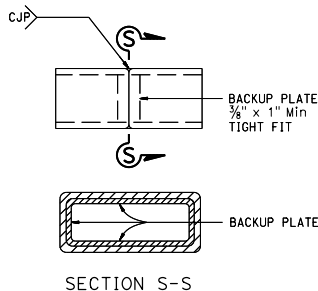
(FOR HSS 8 x 4 x 5/8 RAIL)
EXPANSION SLEEVE DETAIL



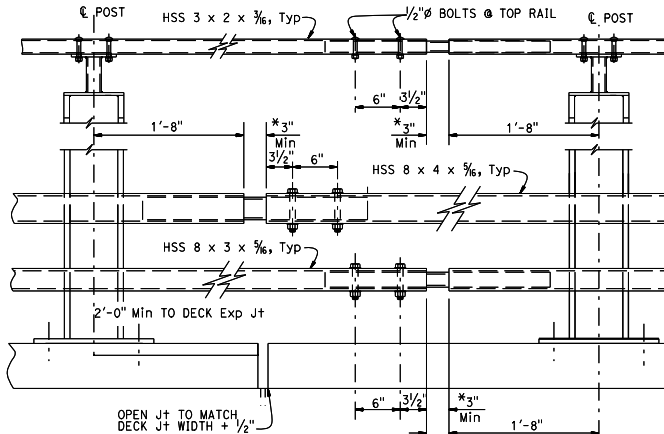
(FOR HSS 8 x 3 x 5/8 RAIL)
EXPANSION SLEEVE DETAIL



STANDARD SPLICE



ALTERNATE TUBE WELDED SPLICE



EXPANSION SPLICE

* MATCH DECK OR WALL JOINT

STATE OF CALIFORNIA
DEPARTMENT OF TRANSPORTATION

**CALIFORNIA ST-20S BRIDGE RAIL
(SHEET 4 OF 4)**

NO SCALE

RSP B11-74 DATED JULY 15, 2016 SUPPLEMENTS THE STANDARD PLANS BOOK DATED 2015.

REVISED STANDARD PLAN RSP B11-74

D16+	COUNTY	ROUTE	POST MILES TOTAL PROJECT	SHEET No.	TOTAL SHEETS

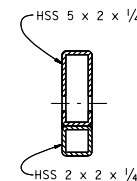
Gregory J. Kaderabek
 REGISTERED CIVIL ENGINEER
 No. C40814
 Exp. 3-31-17
 CIVIL
 STATE OF CALIFORNIA

July 15, 2016
 PLANS APPROVAL DATE
 THE STATE OF CALIFORNIA OR ITS OFFICERS OR AGENTS SHALL NOT BE RESPONSIBLE FOR THE ACCURACY OR COMPLETENESS OF SCANNED COPIES OF THIS PLAN SHEET.

TO ACCOMPANY PLANS DATED _____

NOTES:

- HS bolts with nut and washers, snug tightened, and thread locking system.
- Use 1/2"Ø x 3 3/8" (HSS 8 x 2 x 3/8)
Use 3/4"Ø x 4 5/8" (HSS 8 x 3 x 3/8)
Use 3/4"Ø x 5 5/8" (HSS 8 x 4 x 3/8)



SECTION I-I

2015 REVISED STANDARD PLAN RSP B11-74