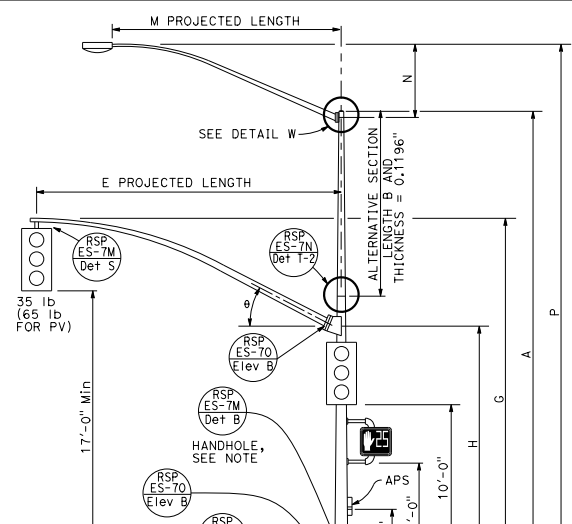
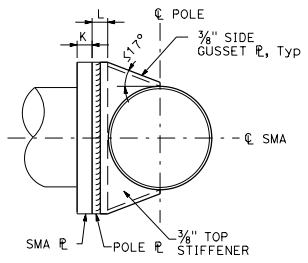


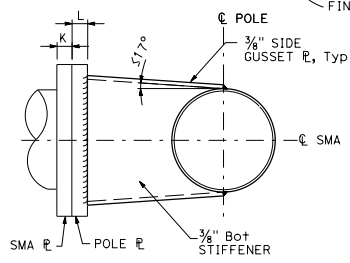
**TYPE 16-1-100, 18-1-100**  
ELEVATION A



**TYPE 19-1-100, 19A-1-100**  
ELEVATION B



SECTION B-B



SECTION C-C

E PROJECTED LENGTH	G MOUNTING HEIGHT	H	Min OD AT POLE	THICKNESS	I BOLT CIRCLE	HS CAP SCREWS	J PLATE SIZE	K MAST ARM R THICKNESS	L POLE R THICKNESS	θ
15'-0"	21'-8"±	17'-6"	7 3/8"	0.1793"	12"	1 1/4"-7NC-3"	1'-1"	1 1/4"	1 1/2"	23°
20'-0"	22'-8"±	16'-0"	8"							
25'-0"	22'-8"±	16'-0"	9"							
30'-0"	23'-0"±	16'-0"	10"							

M PROJECTED LENGTH	N RISE	Min OD AT POLE	THICKNESS	P MOUNTING HEIGHT
6'-0"	2'-0"±	3 1/4"	0.1196"	30'-0" POLE
8'-0"	2'-6"±	3 1/2"		35'-0" POLE
10'-0"	3'-3"±	3 3/8"		31'-6"±
12'-0"	4'-3"±	3 7/8"		36'-6"±
15'-0"	4'-9"±	4 1/4"		32'-0"±

POLE TYPE	LOAD CASE	WIND VELOCITY (mph)	POLE DATA				BASE PLATE DATA				LUMINAIRE MAST ARM	SIGNAL MAST ARM	CIDH PILE FOUNDATION					
			A HEIGHT	Min OD		THICKNESS	ALTERNATIVE SECTION B LENGTH		C	BC = BOLT CIRCLE			THICKNESS	ANCHOR BOLT SIZE	Dia	DEPTH		
				BASE	TOP		BOTTOM	TOP										
16-1-100	1	100	18'-6"	12"	9 3/8"	0.2391" OR 0.25"	None		1'-6"	1'-4"	2"	1 3/4" ø x 42"	NONE	15'-0", [20'-0"]	3'-0"	9'-0"		
18-1-100			17'-0"	12"	9 3/8"		None		1'-6"	1'-4"	2"	1 3/4" ø x 42"	NONE	15'-0", [20'-0"]	3'-0"	9'-0"		
19-1-100			30'-0"	14"	9 3/4"		10'-0"	9 3/4"	11 1/8"	9 3/4"	1'-10"	1'-8"	2 1/2"	2" ø x 42"	6'-15" [12'-0"]	25'-0", [30'-0"]	3'-6"	10'-0"
19A-1-100			35'-0"	14"	9"		15'-0"	11 1/8"	9"	15'-0"	1'-10"	1'-8"	2 1/2"	2" ø x 42"	6'-15" [15'-0"]	25'-0", [30'-0"]	3'-6"	10'-0"

□ INDICATES MAST ARM LENGTH TO BE USED UNLESS OTHERWISE NOTED ON PLANS.

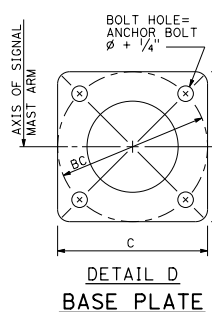
NOTE:  
Handhole shall be located on the downstream side of traffic.

DIST	COUNTY	ROUTE	POST MILES TOTAL PROJECT	SHEET NO.	TOTAL SHEETS

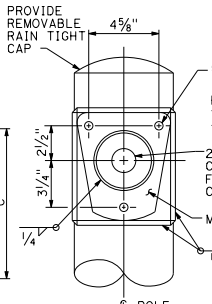
Stanley P. Johnson  
REGISTERED CIVIL ENGINEER  
No. C6798  
EXPIRES 3-31-18  
CIVIL ENGINEER PROFESSIONAL SEAL  
STATE OF CALIFORNIA

PLANS APPROVAL DATE  
July 15, 2016

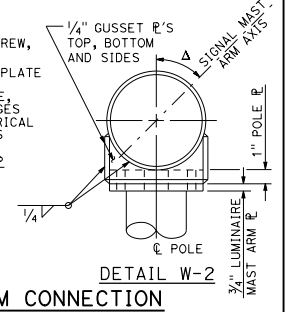
THE STATE OF CALIFORNIA OR ITS OFFICERS OR AGENTS SHALL NOT BE RESPONSIBLE FOR THE ACCURACY OR COMPLETENESS OF SCANNED COPIES OF THIS PLAN SHEET.



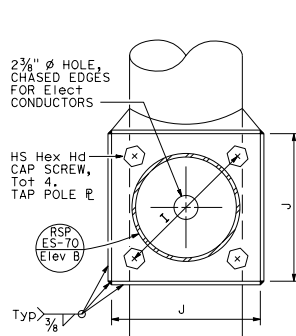
DETAIL D  
BASE PLATE



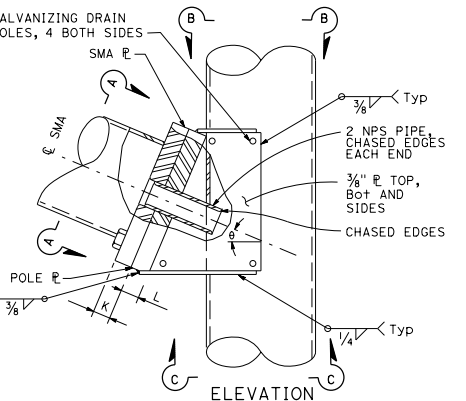
DETAIL W-1  
LUMINAIRE MAST ARM CONNECTION



DETAIL W-2  
SIGNAL MAST ARM CONNECTION



SECTION A-A



ELEVATION

DETAIL A  
SIGNAL MAST ARM CONNECTION

STATE OF CALIFORNIA  
DEPARTMENT OF TRANSPORTATION

**ELECTRICAL SYSTEMS (SIGNAL AND LIGHTING STANDARD, CASE 1 SIGNAL MAST ARM LOADING, WIND VELOCITY = 100 MPH AND SIGNAL MAST ARM LENGTHS 15' TO 30')**

NO SCALE  
RSP ES-7C DATED JULY 15, 2016 SUPERSEDES STANDARD PLAN ES-7C  
DATED OCTOBER 30, 2015 - PAGE 458 OF THE STANDARD PLANS BOOK DATED 2015.

**REVISED STANDARD PLAN RSP ES-7C**

2015 REVISED STANDARD PLAN RSP ES-7C