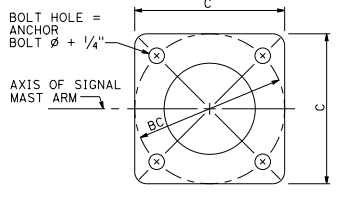


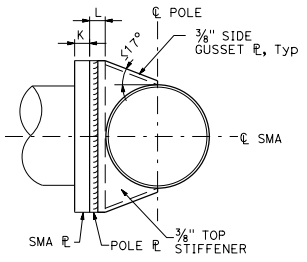
TYPE 16-2-100, 18-2-100

ELEVATION A

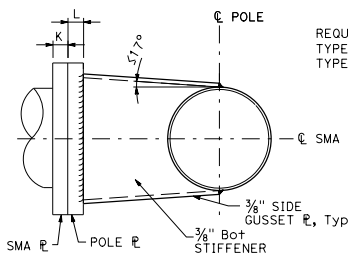


BASE PLATE

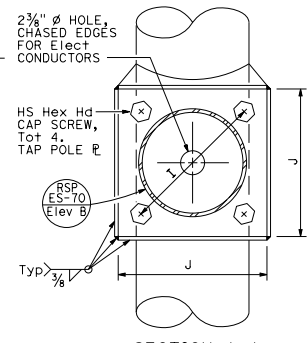
DETAIL B



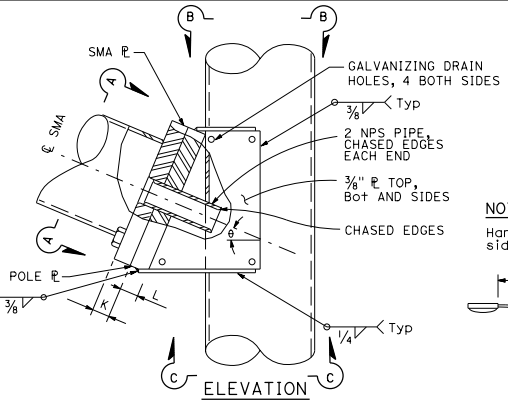
SECTION B-B



SECTION C-C



SECTION A-A

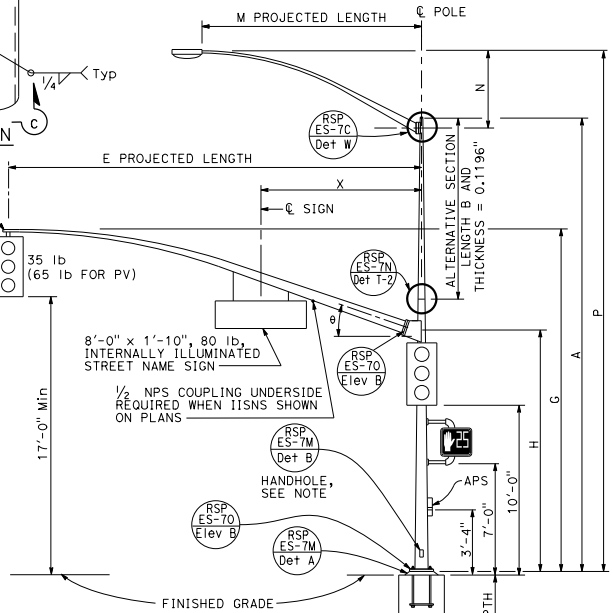


ELEVATION

SIGNAL MAST ARM CONNECTION

DETAIL A

REQUIRED FOR  
TYPE 17-2-100  
TYPE 17A-2-100



TYPE 17-2-100, 17A-2-100,  
19-2-100, 19A-2-100

ELEVATION B

DIST	COUNTY	ROUTE	POST MILES TOTAL PROJECT	SHEET NO.	TOTAL SHEETS

Stanley P. Johnson  
REGISTERED CIVIL ENGINEER

July 15, 2016  
PLANS APPROVAL DATE

Stanley P. Johnson  
No. C6793  
Exp. 3-31-18  
CIVIL  
STATE OF CALIFORNIA

REGISTERED PROFESSIONAL ENGINEER

NOTE: TO ACCOMPANY PLANS DATED \_\_\_\_\_  
Handhole shall be located on the downstream side of traffic.

E PROJECTED LENGTH	G MOUNTING HEIGHT	H	Min OD AT POLE	THICKNESS	I BOLT CIRCLE	HS CAP SCREWS	J PLATE SIZE	K MAST ARM THICKNESS	L POLE THICKNESS	θ	X Max
15'-0"	21'-8"±	17'-6"	7 3/8"	0.1793"	12"	1 1/4"-7NC-3"	1'-1"	1/4"	1 1/2"	23°	10'-6"
20'-0"	21'-8"±		8"				1'-3"				
25'-0"	22'-8"±	16'-0"	9"								
30'-0"	23'-0"±		10"	0.2391"							

M PROJECTED LENGTH	N RISE	Min OD AT POLE	THICKNESS	P MOUNTING HEIGHT
6'-0"	2'-0"±	3 3/4"	0.1196"	30'-0" POLE 35'-0" POLE
8'-0"	2'-6"±	3 1/2"		31'-6"± 36'-6"±
10'-0"	3'-3"±	3"		32'-0"± 37'-0"±
12'-0"	4'-3"±	3 3/8"		32'-9"± 37'-9"±
15'-0"	4'-9"±	4 1/4"		33'-9"± 38'-9"± 34'-3"± 39'-3"±

POLE TYPE	LOAD CASE	WIND VELOCITY (mph)	POLE DATA			BASE PLATE DATA			LUMINAIRE MAST ARM	SIGNAL MAST ARM	CIDH PILE FOUNDATION		
			A HEIGHT	Min OD BASE	TOP	THICKNESS	B LENGTH	BOTTOM			TOP	C	BC = BOLT CIRCLE
16-2-100	2	100	18'-6"	11 3/8"					NONE				
17-2-100			30'-0"	9 3/4"					6'-15' [2'-0"]	15'-0", [20'-0"]			
17A-2-100			35'-0"	9"	10'-0"	11 1/8"	9 3/4"	1'-10"	1'-8"	2 1/2"	2"ø x 42"	3'-6"	10'-0"
18-2-100			17'-0"	11 1/8"						NONE	25'-0", [30'-0"]		
19-2-100			30'-0"	9 3/4"	10'-0"	11 1/8"	9 3/4"	1'-11"	1'-9"	3"	2 1/4"ø x 42"		
19A-2-100			35'-0"	11"	15'-0"	13 1/8"	11"	1'-11"	1'-9"	3"	2 1/4"ø x 42"	6'-15' [15'-0"]	

INDICATES MAST ARM LENGTH TO BE USED UNLESS OTHERWISE NOTED ON PLANS.

STATE OF CALIFORNIA  
DEPARTMENT OF TRANSPORTATION

**ELECTRICAL SYSTEMS  
(SIGNAL AND LIGHTING STANDARD,  
CASE 2 SIGNAL MAST ARM LOADING,  
WIND VELOCITY=100 MPH AND SIGNAL  
MAST ARM LENGTHS 15' TO 30')**

NO SCALE

RSP ES-7D DATED JULY 15, 2016 SUPERSEDES STANDARD PLAN ES-7D  
DATED OCTOBER 30, 2015 - PAGE 459 OF THE STANDARD PLANS BOOK DATED 2015.

**REVISED STANDARD PLAN RSP ES-7D**

2015 REVISED STANDARD PLAN RSP ES-7D