

SIGNAL MAST ARM CONNECTION

TYPE 16-3-100, 18-3-100,  
23-3-100, 27-3-100  
ELEVATION A

BASE PLATE  
DETAIL B

SECTION B-B

SECTION C-C

SIGNAL MAST ARM DATA

E PROJECTED LENGTH	F Min SPACING	G MOUNTING HEIGHT	H	Min OD AT POLE	THICKNESS	I BOLT CIRCLE	HS CAP SCREWS	J PLATE SIZE	K MAST ARM THICKNESS	L POLE THICKNESS	θ	X Max
15'-0"	8'-0"	21'-8"	17'-6"	7 7/8"	0.1793"	12"		1'-3"	1 1/4"	1 1/2"	23°	-
20'-0"		21'-8"±		7 3/4"								
25'-0"	12'-0"	22'-8"		7 3/4"								
30'-0"		22'-8"±		8"	0.2391"	1 1/4"-7NC-3"						10'-6"
35'-0"	14'-0"	23'-0"±	16'-0"	8 3/4"							21°	
40'-0"		23'-0"±		9 3/8"		13"			1 1/2"	1 3/4"	15°	13'-0"
45'-0"	15'-0"	23'-8"±		10 1/8"				1'-5"				

LUMINAIRE MAST ARM DATA

M PROJECTED LENGTH	N RISE	Min OD AT POLE	THICKNESS	P MOUNTING HEIGHT
6'-0"	2'-0"±	3 1/4"	0.1196"	30'-0" POLE 35'-0" POLE
8'-0"	2'-6"±	3 1/2"		32'-0"± 37'-0"±
10'-0"	3'-3"±	3 3/8"		32'-9"± 37'-9"±
12'-0"	4'-3"±	3 7/8"		33'-9"± 38'-9"±
15'-0"	4'-9"±	4 1/4"		34'-3"± 39'-3"±

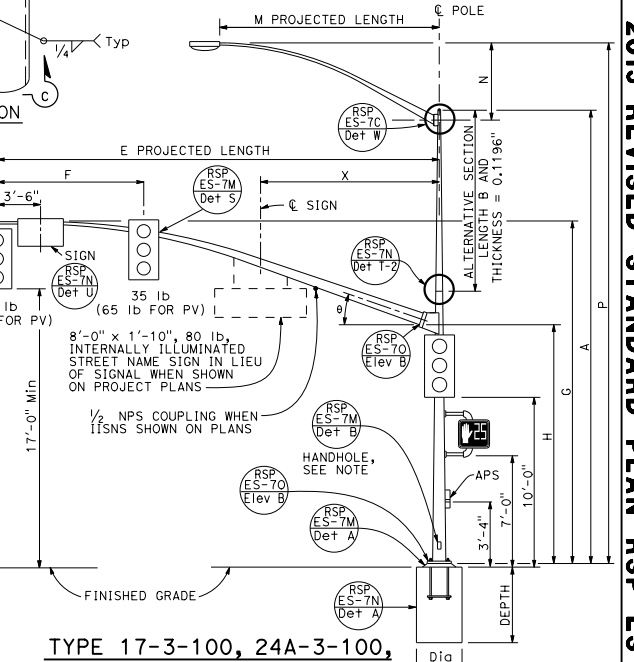
DIST	COUNTY	ROUTE	POST MILES TOTAL PROJECT	SHEET TOTAL SHEETS

Stanley P. Johnson  
REGISTERED CIVIL ENGINEER  
No. C6798  
Exp. 3-31-18  
CIVIL

July 15, 2016  
PLANS APPROVAL DATE

THE STATE OF CALIFORNIA OR ITS OFFICERS OR AGENTS SHALL NOT BE RESPONSIBLE FOR THE ACCURACY OR COMPLETENESS OF SCANNED COPIES OF THIS PLAN SHEET.

NOTE:  
Handhole shall be located on the downstream side of traffic.



TYPE 17-3-100, 24A-3-100,  
19-3-100, 26-3-100,  
19A-3-100, 26A-3-100, 24-3-100  
ELEVATION B

POLE TYPE	LOAD CASE	WIND VELOCITY (mph)	POLE DATA			BASE PLATE DATA			ANCHOR BOLT SIZE	LUMINAIRE MAST ARM	SIGNAL MAST ARM	CIDH PILE FOUNDATION	
			A HEIGHT	Min OD	THICKNESS	B LENGTH	TOP	C				THICKNESS	DiA
16-3-100			18'-6"	13 3/8"					NONE	15'-0"			
17-3-100			30'-0"	11 3/4"	0.2391" OR 0.25"	10'-0"	13 3/8"	11 3/4"	6'-15" [12'-0"]	20'-0"			
18-3-100			17'-0"	13 3/8"					NONE	25'-0"			
19-3-100			30'-0"	11 3/4"		10'-0"	13 3/8"	11 3/4"	6'-15" [12'-0"]	30'-0"	12'-0"		
19A-3-100			35'-0"	11"	0.3125"	15'-0"	13 3/8"	11"	6'-15" [15'-0"]	[30'-0"]			
23-3-100			17'-0"	13 3/8"	0.2391" OR 0.25"	15'-0"	13 3/8"	11 3/4"	NONE	35'-0"	3'-6"		
24-3-100			30'-0"	11 3/4"		10'-0"	13 3/8"	11 3/4"	6'-15" [12'-0"]	35'-0"			
24A-3-100			35'-0"	11"		15'-0"	13 3/8"	11"	6'-15" [15'-0"]				
26-3-100			30'-0"	13 3/4"	0.3125"	10'-0"	15 3/8"	13 3/4"	6'-15" [12'-0"]				
26A-3-100			35'-0"	13"		15'-0"	15 3/8"	13"	6'-15" [15'-0"]	40'-0"			
27-3-100			17'-0"	15 3/8"		15'-0"	13"	13"	6'-15" [15'-0"]	45'-0"	13'-0"		

INDICATES MAST ARM LENGTH TO BE USED UNLESS OTHERWISE NOTED ON PLANS.

STATE OF CALIFORNIA  
DEPARTMENT OF TRANSPORTATION

**ELECTRICAL SYSTEMS  
(SIGNAL AND LIGHTING STANDARD,  
CASE 3 SIGNAL MAST ARM LOADING,  
WIND VELOCITY=100 MPH AND SIGNAL  
MAST ARM LENGTHS 15' TO 45')**

NO SCALE  
RSP ES-7E DATED JULY 15, 2016 SUPERSEDES STANDARD PLAN ES-7E  
DATED OCTOBER 30, 2015 - PAGE 460 OF THE STANDARD PLANS BOOK DATED 2015.

**REVISED STANDARD PLAN RSP ES-7E**

2015 REVISED STANDARD PLAN RSP ES-7E