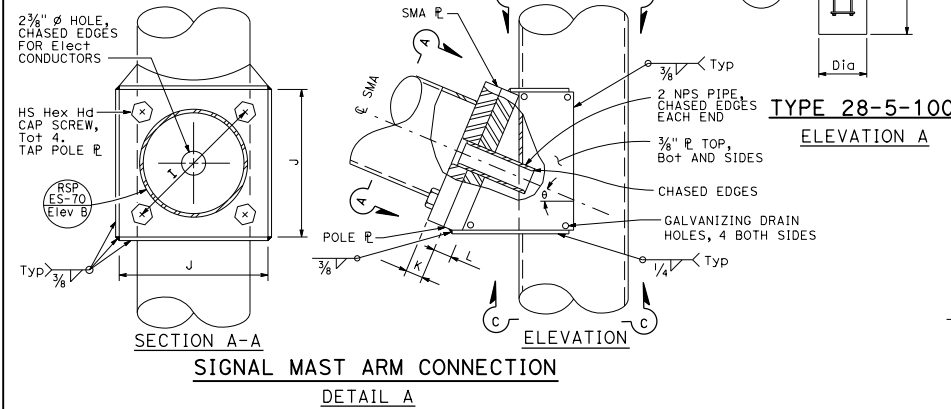
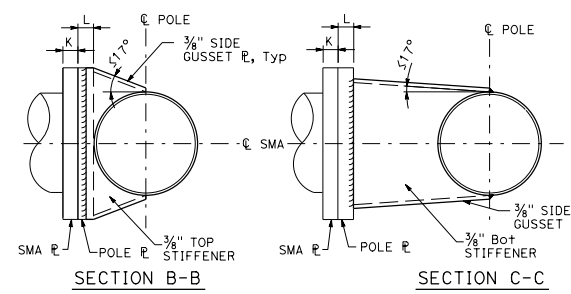


**BASE PLATE
DETAIL B**



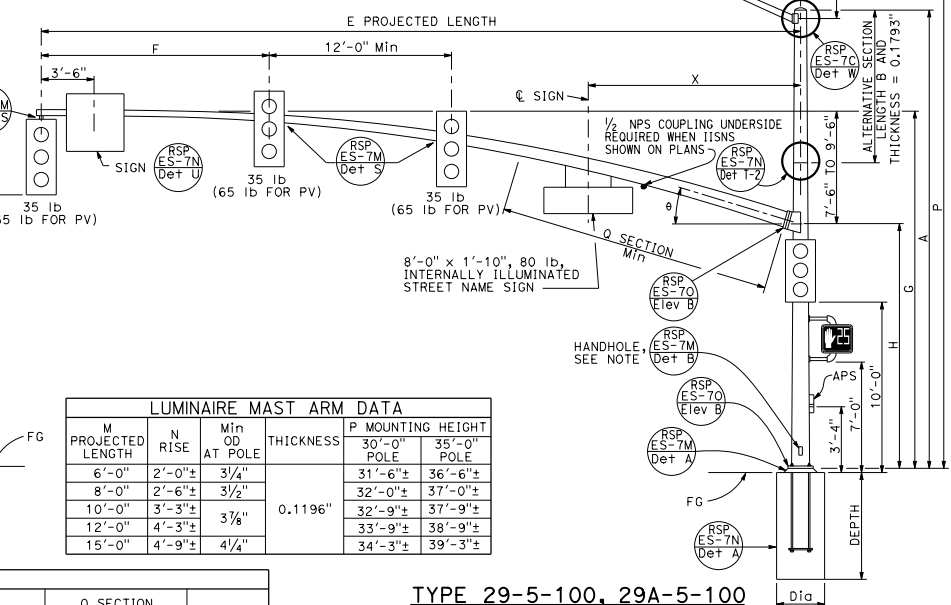
**SIGNAL MAST ARM CONNECTION
DETAIL A**

**TYPE 28-5-100
ELEVATION A**



SECTION B-B

SECTION C-C



**TYPE 29-5-100, 29A-5-100
ELEVATION B**

LUMINAIRE MAST ARM DATA						
M PROJECTED LENGTH	N RISE	Min OD AT POLE	THICKNESS	P MOUNTING HEIGHT POLE	35'-0" POLE	THICKNESS
6'-0"	2'-0"±	3/4"	0.1196"	31'-6"±	36'-6"±	
8'-0"	2'-6"±	3/2"		32'-0"±	37'-0"±	
10'-0"	3'-3"±	3/2"		32'-9"±	37'-9"±	
12'-0"	4'-3"±	3/4"		33'-9"±	38'-9"±	
15'-0"	4'-9"±	4/4"		34'-3"±	39'-3"±	

SIGNAL MAST ARM DATA														
E PROJECTED LENGTH	F Min SPACING	G MOUNTING HEIGHT	H	Min OD AT POLE	THICKNESS	I BOLT CIRCLE	J HS CAP SCREWS	K PLATE SIZE	L MAST ARM THICKNESS	POLE R THICKNESS	θ	Q SECTION LENGTH	THICKNESS	X Max
50'-0"	15'-0"	23'-7"± TO 25'-7"±	16'-0"	1 1/8"	0.1793"	16"	1 1/2"-6NC-3/4"	1'-9"	1 3/4"	1 3/4"	15°	18'-0"	0.2391"	14'-0"
55'-0"				1 1/4"								23'-0"		

POLE TYPE	LOAD CASE	WIND VELOCITY (mph)	POLE DATA				BASE PLATE DATA				LUMINAIRE MAST ARM	SIGNAL MAST ARM	CIDH PILE FOUNDATION				
			A HEIGHT	Min OD BASE	Min OD TOP	THICKNESS	ALTERNATIVE SECTION B LENGTH	SECTION C	BC BOLT CIRCLE	THICKNESS			ANCHOR BOLT SIZE	Dia	DEPTH		
28-5-100	5	100	17'-0"	19 5/8"	22"	0.375"	10'-0"	17 3/4"	17 3/4"	2'-6"	2'-4"	3"	2 1/4"φ x 42"	NONE	50'-0"	4'-0"	14'-0"
29-5-100			30'-0"	17 3/4"	22"		10'-0"	17 3/4"	17 3/4"	2'-6"	2'-4"	3"	2 1/4"φ x 42"	6'-15" [15'-0"]	[55'-0"]		
29A-5-100			35'-0"	17"	22"		15'-0"	19 1/8"	17"	2'-6"	2'-4"	3"	2 1/4"φ x 42"				

□ INDICATES MAST ARM LENGTH TO BE USED UNLESS OTHERWISE NOTED ON PLANS.

DIST	COUNTY	ROUTE	POST MILES TOTAL PROJECT	SHEET TOTAL SHEETS

Stanley P. Johnson
REGISTERED CIVIL ENGINEER
No. C57935
July 15, 2016
PLANS APPROVAL DATE
Stanley P. Johnson
REGISTERED PROFESSIONAL ENGINEER
No. C57935
Exp. 3-31-18
CIVIL
STATE OF CALIFORNIA

THE STATE OF CALIFORNIA OR ITS OFFICERS OR AGENTS SHALL NOT BE RESPONSIBLE FOR THE ACCURACY OR COMPLETENESS OF SCANNED COPIES OF THIS PLAN SHEET.

TO ACCOMPANY PLANS DATED _____
NOTE: Handhole shall be located on the downstream side of traffic.

**ELECTRICAL SYSTEMS
(SIGNAL AND LIGHTING STANDARD,
CASE 5 SIGNAL MAST ARM LOADING,
WIND VELOCITY=100 MPH AND SIGNAL
MAST ARM LENGTHS 50' TO 55')**
NO SCALE
RSP ES-7G DATED JULY 15, 2016 SUPERSEDES STANDARD PLAN ES-7G
DATED OCTOBER 30, 2015 - PAGE 462 OF THE STANDARD PLANS BOOK DATED 2015.
REVISED STANDARD PLAN RSP ES-7G

2015 REVISED STANDARD PLAN RSP ES-7G